

# SafetyCaps Thread GL 45 – angled

EXTRACTION SYSTEMS



## At a squeeze!

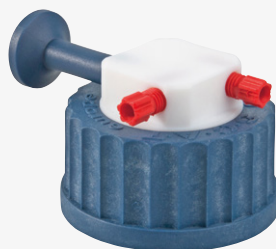
### Space-saving!

Especially where laboratory space is limited, you gain a major advantage with our angled SafetyCaps. Even when extraction bottles are stored above the HPLC system, you can easily reach all the connectors because they are attached on the side.

**A** 199 019



**B** 199 909



**C** 117 010



Up to 150 ml/min.

**D** 160 501

Easily close of unused connectors.

10 x



Blind plug

Fig.	Part No.	Description	Thread size	Connector Ø 3.2 mm OD
<b>A</b>	199 019	SafetyCap I (angled)	GL 45	1x
<b>B</b>	199 909	SafetyCap II (angled)	GL 45	2x
<b>C</b>	117 010	Air valve for SafetyCaps	UNF 1/4" 28G	-
<b>D</b>	160 501	Blind plug (10 pc./unit)	UNF 1/4" 28G	-