



FLUID METERING, INC.

DISPENSERS & METERING PUMPS

IP Intelligent Pump

Valveless, Programmable Stepper Drive Pump

NEW PRODUCT



Valveless Pump, Stepper Motor Drive & Programmable Electronics in an Integral Compact Design

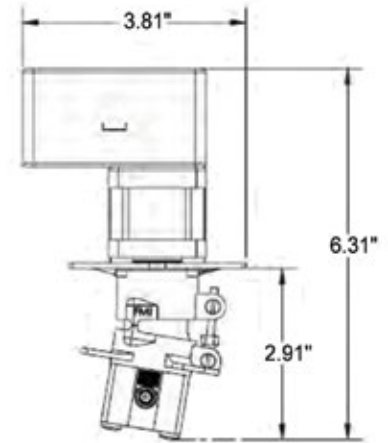
Features

- Integrates FMI's STH Stepper Motor Pump with an Intelligent Programmable Driver
- Programmable Driver Provides Precision Control of the Stepper Motor
- Closed Loop Controlled Stepper Motor with Integral 1000 Line Encoder
- 5 Programmable Inputs / 4 Programmable Outputs
- Multiple Programming Platforms Including Visual Basic, C/C++, Delphi and Lab VIEW
- RS-232 Serial Communication, CANopen Protocol Supported
- Variable Speed Range: 10 to 2000 RPM
- Flow Rates from 25 μ L/min to 240 mL/min

IP Intelligent Pump

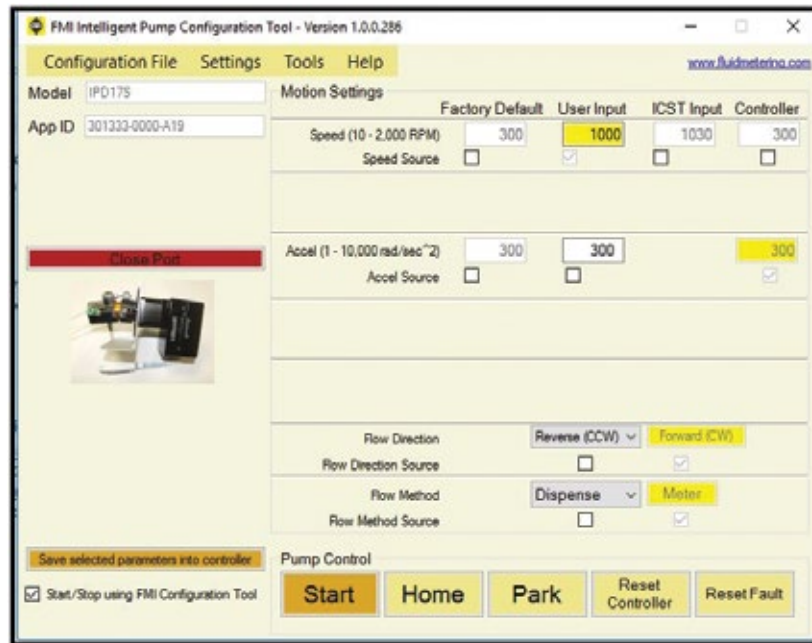
Specifications

- Dimensions:**
 6.31" x 3.81" x 3.25"
 (160.3 x 96.8 x 82.6 mm)
- Shipping Weight:**
 approx 2 lbs. (0.9 kg)
- Flow Rate:**
 25 µL/min to 240 mL/min
- Pump Pressure Rating:**
 40 psig
- Motor Speed:**
 10 - 2000 RPM
- Input Voltage:**
 Pump Motor Voltage: 9-36 VDC
 Logic Voltage: 7-38 VDC
- Rated Current:**
 3.0A Power Supply @ 24VDC
 (recommended)
- Motor Frame:**
 NEMA size 17
- Operating Temperature:**
 32°F - 104°F (0°C - 40°C)



GUI - Intelligent Pump Configuration Tool

- Communication via RS232 or CANopen protocol
- Adjustments can be made to custom fit the pump control settings



FMI Cerampump® Valveless Metering

The valveless pumping/dispensing function is accomplished by the synchronous rotation and reciprocation of the ceramic piston in the precisely mated liner. One complete revolution is required for each suction/discharge cycle.

