

## PL4 - thin and critical fluids

- designed to pump thin and critical fluids
- suitable for solvents or corrosive chemicals
- standard AISI 316 body and plates + PEEK gears
- different MOC on demand
- wide turn down ratio (10:1) thanks to stepper or brushless motors
- available from may, 2017

	SI
Viscosity	cP
Capacity range	cc/rev l/h
Rotational speed	rpm
Max outlet pressure	psi bar
Operating temperature	°C

### Applications:

Chemicals  
Water  
Solvents

### Materials:

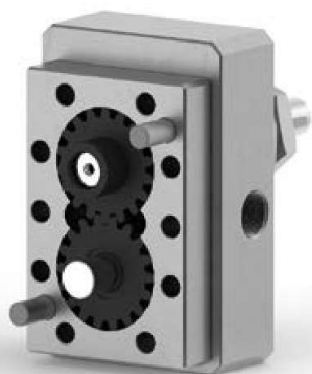
AISI 316  
Martensitic S.S.  
Thermoplastics

### Shaft seal:

Double lips  
Mechanical seal  
Packing  
Mag drive

### On demand:

ATEX certificate  
Surface treatment  
Drives



## Complete pump unit

PL4

0,5 - 1.000

To be determined

To be determined

To be determined

To be determined

- solutions for every pumping need
- from very low flow rates to high speed - high flow systems (0.06 l/h - 6.000 l/h)
- thin to high viscosity chemical fluids dosing ability (0,1 - 1.000.000 cP)
- extreme operating temperatures (-50 +400°C)
- high operating pressures (up to 450 bar)
- solid content, toxic and dangerous
- large selection of motorisation available
- mag drive, mechanical seals or standard packing seal
- threaded ports either BST or NPT and DIN or ANSI flanges available
- ATEX certified
- integrated vsd inverter or manual speed variator

