

Heavy-Duty Vortex Mixers



Heavy-Duty Vortex Mixers feature a heavy-duty design and efficient motor to permit continuous duty operation, and the ability to handle accessory components over the entire speed range. Analog variable speed models or microprocessor-controlled digital models offer exact speed control when applications demand repeatable results. A wide range of accessories are available for microtubes, microplates and a variety of tube sizes from 0.5 to 50 ml.

- Accessory Adapter's Unique Mode of Attachment Allows for Secure Mixing
- Touchpad Control & Independent LED Displays for Speed/Time on Digital Models
- Variable Speed Analog Model Offers an Economical Alternative to Digital Model

Heavy-Duty Vortex Mixers

- Designed for continuous duty
- LED displays for speed and time
- Includes foam insert for 1.5 mL to 2.0 mL microtubes

The OHAUS Digital Heavy-Duty Vortex Mixer is ideal for applications that demand repeatable results. Mixer features touchpad controls and LED displays for accurate speed (rpm) and time (minutes and seconds) results. The heavy-duty design and efficient motor allow this mixer to operate in continuous duty and handle all accessories over the entire speed range. Choose from two modes of operation: "Touch" mode for mixing tubes when cup head or Universal Holder with cover is depressed, or "On" mode when using any of the accessory attachments for continuous operation. Microprocessor control maintains set speed for strong, consistent mixing action. Timer will display elapsed time or, when programmed to user defined time limits, the unit will shut off when time reaches zero.

Operating Features:

Microprocessor Control: The variable speed microprocessor control provides consistent uniform mixing action.

LED Display: Touch pad controls with easy-to-read, independent LED displays for speed and time allow operator to view both settings at once. Provides repeatable and accurate results every time and is easily visible across lab benches. Timer will display elapsed time or, when programmed to user defined limit, will shut off unit when time reaches zero. Display will show last used settings, even after power has been turned off.

Operating Conditions:

Unit can be run in conditions from 4 to 40°C (39 to 104°F), 20% to 85% relative humidity, non-condensing.

Ordering Information:

Mixer includes a cup head, universal holder with cover, foam microtube insert for (38) 1.5 to 2.0 mL microtubes, and a detachable, 3-wire cord and specified plug. Additional accessories can be found on page 60.

This product includes:

Description	Item Number
Cup Head	30400210
Universal Holder	30400226
Universal Holder Cover	30400225
Foam Insert (1.5 to 2.0 microtubes)	30400217



Specifications	
Speed Range	On Mode 300 to 2500 rpm Touch Mode 300 to 3500 rpm
Timer	1 second to 160 hours
Orbit	4.9 mm (0.19")
Controls	Touch/Standby/On Rocker Switch, LED Displays for Speed/Time, Up/Down Buttons for Set-Point Control
Capacity	2.5 lbs (1.1 kg)
Duty Rating	Continuous duty
Dimensions (L x W x H)	9.5 x 6.6 x 6.3" (24.1 x 16.8 x 16 cm)
Ship Weight	15 lbs (6.8 kg)

Description	Model	Item Number	Country Code
Digital Heavy Duty Vortex Mixer	VXHDDG	30392136	VN, MY, SG, ID, IN
Digital Heavy Duty Vortex Mixer	VXHDDG	30392137	AU, NZ
Digital Heavy Duty Vortex Mixer	VXHDDG	30392139	TH, PH

Vortex Mixers

Heavy-Duty Vortex Mixers

- Designed for continuous duty
- Includes foam insert for 1.5 mL to 2.0 mL microtubes
- Heavy-duty design

The OHAUS Analog Heavy-Duty Vortex Mixer is a variable speed analog mixer that is designed for continuous duty. The heavy-duty design and efficient motor allow this mixer to operate in continuous duty and handle all accessories over the entire speed range. Choose from two modes of operation: "Touch" mode for mixing tubes when cup head or Universal Holder with cover is depressed, or "On" mode when using any of the accessory attachments for continuous operation.

Operating Conditions:

Unit can be run in conditions from 4 to 40°C (39 to 104°F), 20% to 85% relative humidity, non-condensing.

Ordering Information:

Mixer includes a cup head, universal holder with cover, foam microtube insert for (38) 1.5 to 2.0 mL microtubes, and a detachable, 3-wire cord and specified plug. Additional accessories can be found on page 60.



This product includes:

Description	Item Number
Cup Head	30400210
Universal Holder	30400226
Universal Holder Cover	30400225
Foam Insert (1.5 to 2.0 microtubes)	30400217



Specifications		
Speed Range	On Mode	300 to 2500 rpm
	Touch Mode	300 to 3500 rpm
Orbit		4.9 mm (0.19")
Controls		Analog
Capacity		2.5 lbs (1.1 kg)
Duty Rating		Continuous duty
Dimensions (L x W x H)		9.5 x 6.6 x 6.3" (24.1 x 16.8 x 16 cm)
Ship Weight		15 lbs (6.8 kg)

Description	Model	Item Number	Country Code
Analog Heavy Duty Vortex Mixer	VXHDAL	30392141	VN, MY, SG, ID, IN
Analog Heavy Duty Vortex Mixer	VXHDAL	30392142	AU, NZ
Analog Heavy Duty Vortex Mixer	VXHDAL	30392144	TH, PH

Vortex Mixers

Microplate Vortex Mixer Accessories

Foam Insert for 0.5 mL Microtubes

Foam insert holds (52) 0.5 mL microtubes.
Requires Universal Holder.

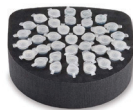
Description	Item Number
0.5 mL microtubes	30400216
Universal Holder	30400226



Foam Insert for 1.5 to 2.0 mL Microtubes

Foam insert holds (38) 1.5 to 2.0 mL microtubes.
Requires Universal Holder.

Description	Item Number
1.5 to 2.0 mL microtubes	30400217
Universal Holder	30400226



Foam Insert for 12-13 mm Test Tubes

Foam insert holds (34) 12-13 mm diameter test tubes.
Requires Universal Holder.

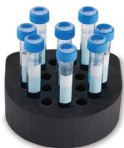
Description	Item Number
12-13 mm test tubes	30400220
Universal Holder	30400226



Foam Insert for 15-18 mm Test Tubes

Foam insert holds (20) 15-18 mm diameter test tubes.
Ideal for 15 mL centrifuge tubes.
Requires Universal Holder.

Description	Item Number
15-18 mm test tubes	30400221
Universal Holder	30400226



Foam Insert for 19-21 mm Test Tubes

Foam insert holds (18) 19-21 mm diameter test tubes.
Requires Universal Holder.

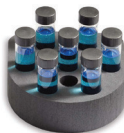
Description	Item Number
19-21 mm test tubes	30400222
Universal Holder	30400226



Foam Insert for 22-25 mm Test Tubes

Foam insert holds (13) 22-25 mm diameter test tubes.
Requires Universal Holder.

Description	Item Number
22-25 mm test tubes	30400223
Universal Holder	30400226



Foam Insert for 26-29 mm Test Tubes

Foam insert holds (4) 26-29 mm diameter test tubes. Ideal for 50 mL centrifuge tubes. Requires Universal Holder.

Description	Item Number
26-29 mm test tubes	30400224
Universal Holder	30400226



Single Tube Holder

Single tube, hands free mixing designed to fit on the Heavy-Duty Vortex Mixer. Easily attached to the top of mixer and is magnetically secured.
Accepts tubes from 2.5 to 4.5" (6.4-11.4 cm).
Minimum tube diameter is 0.75" (19 mm)

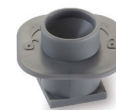
Description	Item Number
Single Holder	30400219



Cup Head*

Designed for mixing 1 tube at a time.

Description	Item Number
Cup Head	30400210



Small Vessel Holder

Rubber holder secures 125 and 250 mL Erlenmeyer flasks. Vessel holder also includes a grip mat.
Requires Universal Holder.

Description	Item Number
Small Vessel Holder	30400218
Universal Holder	30400226



Large Vessel Holder

Rubber holder secures 500 and 1000 mL Erlenmeyer flasks. Vessel holder also includes a grip mat.
Requires Universal Holder.

Description	Item Number
Large Vessel Holder	30400211
Universal Holder	30400226



Microplate Holder (Single)*

Designed to hold one standard microplate.

Description	Item Number
Single Holder	30400215



Microplate Holder (Double)*

Designed to hold two standard microplates.

Description	Item Number
Double Holder	30400213



Microplate Holder (Quad)

Designed to hold four standard microplates.

Description	Item Number
Quad Holder	30400214



Stackable Microplate Holder Four

Designed to maximize the capacity of the Heavy-Duty Vortex Mixer to eight microplates by stacking the tray on top of the four plate holder.

Description	Item Number
Stackable Holder	30400212



Flat Foam Insert

Ideal for custom applications. Can be cut or drilled to fit your specifications. Requires Universal Holder.

Description	Item Number
Flat Foam Insert	30400209
Universal Holder	30400226



Universal Holder & Cover

Replacement for items supplied with Heavy-Duty Vortex Mixer. Cover allows for mixing irregularly shaped objects.

Description	Item Number
Universal Holder	30400226
Universal Holder Cover	30400225



Unless noted with an asterisk (), for use on Heavy-Duty Vortex only.