

40AC SERIES

TUBING SIZE 1/4" - 3/8" | 1/4" FLOW ACETAL (POM)



LEGACY METAL LATCH

These general purpose 1/4" flow size couplings are produced in a durable natural Acetal (POM) thermoplastic. They feature a thumb-latch release which provides a simple one hand operation. They are available in both valved and non-valved configurations. All 40AC couplings interconnect with all other 40PP and 40CB couplings as well as other similar industry thumb-latch type couplings.

PERFORMANCE RATINGS

- Operating Pressure: Vacuum to 120psi; (8,3bar)
- Temperature: -40°F to 180°F; (-40°C to 82°C)
- Flow Capacity: 1/4" Size

MATERIALS & CONSTRUCTION

- Bodies & Terminations: Acetal (POM)
- Internal Valves: Acetal (POM)
- Internal Valve Springs: 316 Stainless Steel
- O-rings: Buna-N (others available)
- Thumb-latch: Stainless Steel
- External Springs & Pins: Stainless Steel

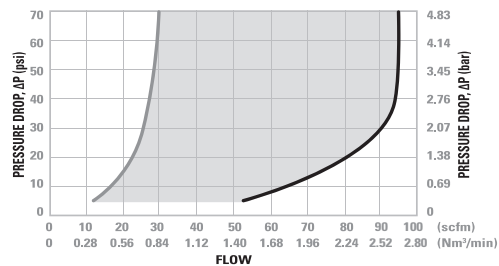


Interchangeable with CPC® Colder PLC Series



Please contact us for NSF compliant and cleanroom produced versions.

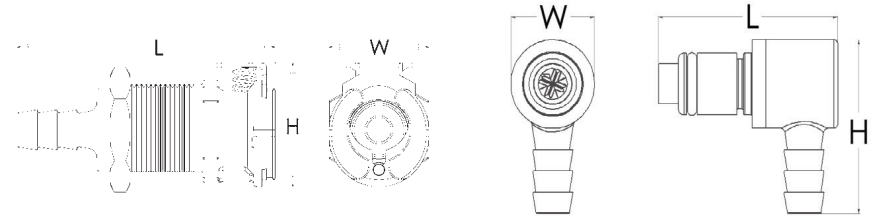
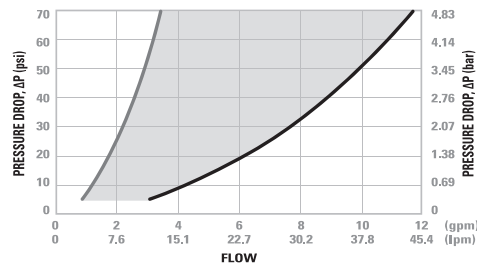
40AC Series Air Flow



Valved Socket & Plug Valved & Non-Valved Coupling Set Non-Valved Socket & Plug



40AC Series Water Flow

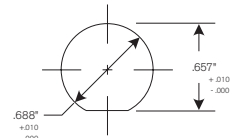


*Illustrations are actual size of product.

Reference Dimensions: L = Length, W = Width, H = Height

Panel Mount Dimensions

	PANEL OPENING	MAX PANEL THICKNESS	MIN PANEL THICKNESS
SOCKETS	See Drawing	0.5"	0.05"
PLUGS	0.688"	0.3"	0.05"



PANEL NUT HEX SIZE	PANEL NUT THREAD
13/16"	11/16" - 24 UNS

PART NUMBER GUIDE EXAMPLE:
40 AC V - PB 2 - 04

FLOW SIZE OR LATCH TYPE MATERIAL VALVE CONFIG. AND O-RING TYPE CONNECTION SIZE

Flow Rates

The data below shows the liquid flow rates for LinkTech couplings. Each coupling combination was tested at 70° F (21°C).

Specific coupling combination flow rates can be determined by using this formula:

$$Q = C_v \sqrt{\frac{\Delta P}{S}}$$

Q = Flow rate in gallons per minute
 C_v = Average flow rates (see chart)
 ΔP = Pressure drop across coupling (psi)
 S = Specific gravity of liquid.

C_v Values for 40AC Series Couplings

SOCKETS	40ACV-PB2-04	40AC-PB2-04	40ACV-PB2-06	40AC-PB2-06	40ACV-PB9-04	40AC-PB9-04	40ACV-PB9-06	40AC-PB9-06	40ACV-PB1-04	40AC-PB1-04	40ACV-PB1-06	40AC-PB1-06
40ACV-SB2-04	0.42	0.58	0.45	0.78	0.31	0.38	0.45	0.60	0.43	0.79	0.45	0.75
40AC-S2-04	0.52	0.95	0.70	1.00	0.38	0.39	0.55	0.87	0.65	0.95	0.65	1.00
40ACV-SB2-06	0.43	0.63	0.50	0.89	0.33	0.39	0.62	0.50	0.45	0.95	0.50	0.92
40AC-S2-06	0.53	0.95	0.80	1.40	0.38	0.39	0.57	1.00	0.70	1.40	0.73	1.40
40ACV-SB3-04	0.42	0.58	0.45	0.78	0.31	0.38	0.45	0.60	0.43	0.79	0.45	0.75
40AC-S3-04	0.52	0.95	0.70	1.00	0.38	0.39	0.55	0.87	0.65	0.95	0.65	1.00
40ACV-SB3-06	0.43	0.63	0.50	0.89	0.33	0.39	0.56	0.61	0.45	0.95	0.50	0.92
40AC-S3-06	0.53	0.95	0.80	1.40	0.38	0.39	0.57	1.00	0.70	1.40	0.73	1.40
40ACV-SB1-04	0.41	0.65	0.50	0.81	0.31	0.35	0.48	0.74	0.45	0.80	0.45	0.80
40AC-S1-04	0.56	0.84	0.83	1.40	0.35	0.40	0.58	1.04	0.75	1.40	0.78	1.40
40ACV-SB1-06	0.43	0.70	0.50	1.03	0.30	0.36	0.59	0.60	0.45	0.97	0.48	1.00
40AC-S1-06	0.57	0.84	0.82	1.40	0.35	0.40	0.60	1.05	0.75	1.40	0.75	1.40

Interchangeable with
CPC® Colder PLC Series



40AC

Tubing Size 1/4" - 3/8"
1/4" Flow Acetal (POM)



MALE THREAD SOCKET

NON-VALVED	VALVED	THREAD SIZE	LENGTH	WIDTH	HEIGHT
40AC-S1-04	40ACV-SB1-04	1/4" NPT	1.15" (29mm)	.75" (19mm)	.93" (24mm)
40AC-S1-04BSPT	40ACV-SB1-04BSPT	1/4" BSPT	1.15" (29mm)	.75" (19mm)	.93" (24mm)
40AC-S1-06	40ACV-SB1-06	3/8" NPT	1.15" (29mm)	.75" (19mm)	.93" (24mm)
40AC-S1-06BSPT	40ACV-SB1-06BSPT	3/8" BSPT	1.15" (29mm)	.75" (19mm)	.93" (24mm)



IN-LINE HOSE BARB SOCKET

NON-VALVED	VALVED	TUBE SIZE	METRIC TUBE	LENGTH	WIDTH	HEIGHT
40AC-S2-04	40ACV-SB2-04	1/4" ID	6.4mm ID	1.90" (48mm)	.75" (19mm)	.93" (24mm)
40AC-S2-05	40ACV-SB2-05	5/16" ID	7.9mm ID	1.90" (48mm)	.75" (19mm)	.93" (24mm)
40AC-S2-06	40ACV-SB2-06	3/8" ID	9.5mm ID	1.90" (48mm)	.75" (19mm)	.93" (24mm)



IN-LINE PTF SOCKET

NON-VALVED	VALVED	TUBE SIZE	METRIC TUBE	LENGTH	WIDTH	HEIGHT
40AC-S9-04	40ACV-SB9-04	1/4" OD, .17" ID	6.4mm OD, 4.3mm ID	1.85" (47mm)	.75" (19mm)	.93" (24mm)
40AC-S9-06	40ACV-SB9-06	3/8" OD, .25" ID	9.5mm OD, 6.4mm ID	1.95" (50mm)	.75" (19mm)	.93" (24mm)

Interchangeable with
CPC® Colder PLC Series



PANEL MOUNT HOSE BARB SOCKET

NON-VALVED	VALVED	TUBE SIZE	METRIC TUBE	LENGTH	WIDTH	HEIGHT
40AC-S3-04	40ACV-SB3-04	1/4" ID	6.4mm ID	1.90" (48mm)	.75" (19mm)	.93" (24mm)
40AC-S3-05	40ACV-SB3-05	5/16" ID	7.9mm ID	1.90" (48mm)	.75" (19mm)	.93" (24mm)
40AC-S3-06	40ACV-SB3-06	3/8" ID	9.5mm ID	1.90" (48mm)	.75" (19mm)	.93" (24mm)



PANEL MOUNT PTF SOCKET

NON-VALVED	VALVED	TUBE SIZE	METRIC TUBE	LENGTH	WIDTH	HEIGHT
40AC-S8-04	40ACV-SB8-04	1/4" OD, .17" ID	6.4mm OD, 4.3mm ID	1.87" (47mm)	.75" (19mm)	.93" (24mm)
40AC-S8-06	40ACV-SB8-06	3/8" OD, .25" ID	9.5mm OD, 6.4mm ID	1.95" (50mm)	.75" (19mm)	.93" (24mm)



IN-LINE PUSH-IN SOCKET

NON-VALVED	VALVED	TUBE SIZE	METRIC TUBE	LENGTH	WIDTH	HEIGHT
40AC-S17-04	40ACV-SB17-04	1/4" OD	6.4mm OD	1.93" (49mm)	.75" (19mm)	.93" (24mm)



PANEL MOUNT PUSH-IN SOCKET

NON-VALVED	VALVED	TUBE SIZE	METRIC TUBE	LENGTH	WIDTH	HEIGHT
40AC-S18-04	40ACV-SB18-04	1/4" OD	6.4mm OD	1.93" (49mm)	.75" (19mm)	.94" (24mm)

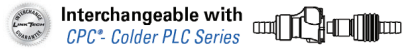


*External product dimensions are the same with or without a shut off valve

PART NUMBER GUIDE EXAMPLE:

40 AC V - PB 2 - 04

|
 FLOW SIZE OR LATCH TYPE MATERIAL VALVE CONFIG. AND O-RING TYPE CONNECTION SIZE



NON-VALVED

MALE THREAD PLUG					
NON-VALVED	THREAD SIZE	LENGTH	WIDTH	HEIGHT	
40AC-PB1-04	1/4" NPT	1.25" (32mm)	.63" (16mm)	.63" (16mm)	
40AC-PB1-04BSPT	1/4" BSPT	1.25" (32mm)	.63" (16mm)	.63" (16mm)	
40AC-PB1-06	3/8" NPT	1.25" (32mm)	.75" (19mm)	.75" (19mm)	
40AC-PB1-06BSPT	3/8" BSPT	1.25" (32mm)	.75" (19mm)	.75" (19mm)	

IN-LINE HOSE BARB PLUG					
NON-VALVED	TUBE SIZE	METRIC TUBE	LENGTH	WIDTH	HEIGHT
40AC-PB2-04	1/4" ID	6.4mm ID	1.25" (32mm)	.70" (18mm)	.70" (18mm)
40AC-PB2-05	5/16" ID	7.9mm ID	1.25" (32mm)	.70" (18mm)	.70" (18mm)
40AC-PB2-06	3/8" ID	9.5mm ID	1.25" (32mm)	.70" (18mm)	.70" (18mm)

IN-LINE PTF PLUG					
NON-VALVED	TUBE SIZE	METRIC TUBE	LENGTH	WIDTH	HEIGHT
40AC-PB9-04	1/4" OD, .17" ID	6.4mm OD, 4.3mm ID	1.25" (32mm)	.63" (16mm)	.63" (16mm)
40AC-PB9-06	3/8" OD, .25" ID	9.5mm OD, 6.4mm ID	1.40" (36mm)	.63" (16mm)	.63" (16mm)

PANEL MOUNT HOSE BARB PLUG					
NON-VALVED	TUBE SIZE	METRIC TUBE	LENGTH	WIDTH	HEIGHT
40AC-PB3-04	1/4" ID	6.4mm ID	1.86" (47mm)	.75" (19mm)	.75" (19mm)
40AC-PB3-05	5/16" ID	7.9mm ID	1.91" (49mm)	.75" (19mm)	.75" (19mm)
40AC-PB3-06	3/8" ID	9.5mm ID	1.86" (47mm)	.75" (19mm)	.75" (19mm)

PANEL MOUNT PTF PLUG					
NON-VALVED	TUBE SIZE	METRIC TUBE	LENGTH	WIDTH	HEIGHT
40AC-PB8-04	1/4" OD, .17" ID	6.4mm OD, 4.3mm ID	1.77" (45mm)	.63" (16mm)	.80" (20mm)
40AC-PB8-06	3/8" OD, .25" ID	9.5mm OD, 6.4mm ID	1.90" (48mm)	.63" (16mm)	.80" (20mm)

ELBOW HOSE BARB PLUG					
NON-VALVED	TUBE SIZE	METRIC TUBE	LENGTH	WIDTH	HEIGHT
40AC-PB4-04	1/4" ID	6.4mm ID	1.10" (28mm)	.63" (16mm)	1.30" (33mm)
40AC-PB4-06	3/8" ID	9.5mm ID	1.10" (28mm)	.63" (16mm)	1.30" (33mm)

ELBOW PTF PLUG					
NON-VALVED	TUBE SIZE	METRIC TUBE	LENGTH	WIDTH	HEIGHT
40ACX-PB10-04	1/4" OD, .17" ID	6.4mm OD, 4.3mm ID	1.09" (28mm)	.63" (16mm)	1.15" (29mm)
40AC-PB10-06	3/8" OD, .25" ID	9.5mm OD, 6.4mm ID	1.22" (31mm)	.63" (16mm)	1.30" (33mm)

IN-LINE PUSH-IN PLUG					
NON-VALVED	TUBE SIZE	METRIC TUBE	LENGTH	WIDTH	HEIGHT
40AC-PB17-04	1/4" OD	6.4mm OD	1.81" (46mm)	.70" (18mm)	.70" (18mm)

PANEL MOUNT PUSH-IN PLUG					
NON-VALVED	TUBE SIZE	METRIC TUBE	LENGTH	WIDTH	HEIGHT
40AC-PB18-04	1/4" OD	6.4mm OD	1.89" (48mm)	.75" (19mm)	.75" (19mm)

END STOP PLUG					
NON-VALVED	LENGTH	WIDTH	HEIGHT		
40AC-PB6	.93" (24mm)	.63" (16mm)	.63" (16mm)		



VALVED

MALE THREAD PLUG					
VALVED	THREAD SIZE	LENGTH	WIDTH	HEIGHT	
40ACV-PB1-04	1/4" NPT	1.65" (42mm)	.63" (16mm)	.63" (16mm)	
40ACV-PB1-04BSPT	1/4" BSPT	1.65" (42mm)	.63" (16mm)	.63" (16mm)	
40ACV-PB1-06	3/8" NPT	1.65" (42mm)	.75" (19mm)	.75" (19mm)	
40ACV-PB1-06BSPT	3/8" BSPT	1.65" (42mm)	.75" (19mm)	.75" (19mm)	

IN-LINE HOSE BARB PLUG					
VALVED	TUBE SIZE	METRIC TUBE	LENGTH	WIDTH	HEIGHT
40ACV-PB2-04	1/4" ID	6.4mm ID	1.94" (49mm)	.70" (18mm)	.70" (18mm)
40ACV-PB2-05	5/16" ID	7.9mm ID	1.94" (49mm)	.70" (18mm)	.70" (18mm)
40ACV-PB2-06	3/8" ID	9.5mm ID	1.83" (46mm)	.70" (18mm)	.70" (18mm)

IN-LINE PTF PLUG					
VALVED	TUBE SIZE	METRIC TUBE	LENGTH	WIDTH	HEIGHT
40ACV-PB9-04	1/4" OD, .17" ID	6.4mm OD, 4.3mm ID	1.89" (48mm)	.63" (16mm)	.63" (16mm)
40ACV-PB9-06	3/8" OD, .25" ID	9.5mm OD, 6.4mm ID	1.83" (46mm)	.63" (16mm)	.63" (16mm)

PANEL MOUNT HOSE BARB PLUG					
VALVED	TUBE SIZE	METRIC TUBE	LENGTH	WIDTH	HEIGHT
40ACV-PB3-04	1/4" ID	6.4mm ID	2.01" (51mm)	.75" (19mm)	.75" (19mm)
40ACV-PB3-05	5/16" ID	7.9mm ID	2.05" (52mm)	.75" (19mm)	.75" (19mm)
40ACV-PB3-06	3/8" ID	9.5mm ID	2.01" (51mm)	.75" (19mm)	.75" (19mm)

PANEL MOUNT PTF PLUG					
VALVED	TUBE SIZE	METRIC TUBE	LENGTH	WIDTH	HEIGHT
40ACV-PB8-04	1/4" OD, .17" ID	6.4mm OD, 4.3mm ID	1.91" (49mm)	.63" (16mm)	.80" (20mm)
40ACV-PB8-06	3/8" OD, .25" ID	9.5mm OD, 6.4mm ID	2.04" (52mm)	.63" (16mm)	.80" (20mm)

ELBOW HOSE BARB PLUG					
VALVED	TUBE SIZE	METRIC TUBE	LENGTH	WIDTH	HEIGHT
40ACV-PB4-04	1/4" ID	6.4mm ID	1.35" (34mm)	.63" (16mm)	1.30" (33mm)
40ACV-PB4-06	3/8" ID	9.5mm ID	1.35" (34mm)	.63" (16mm)	1.30" (33mm)

ELBOW PTF PLUG					
VALVED	TUBE SIZE	METRIC TUBE	LENGTH	WIDTH	HEIGHT
40ACV-PB10-04	1/4" OD, .17" ID	6.4mm OD, 4.3mm ID	1.19" (30mm)	.63" (16mm)	1.15" (29mm)
40ACV-PB10-06	3/8" OD, .25" ID	9.5mm OD, 6.4mm ID	1.37" (35mm)	.63" (16mm)	1.30" (33mm)

IN-LINE PUSH-IN PLUG					
VALVED	TUBE SIZE	METRIC TUBE	LENGTH	WIDTH	HEIGHT
40ACV-PB17-04	1/4" OD	6.4mm OD	1.97" (50mm)	.70" (18mm)	.70" (18mm)

PANEL MOUNT PUSH-IN PLUG					
VALVED	TUBE SIZE	METRIC TUBE	LENGTH	WIDTH	HEIGHT
40ACV-PB18-04	1/4" OD	6.4mm OD	2.03" (52mm)	.75" (19mm)	.75" (19mm)