

# 65GP SERIES

TUBING SIZE 1/2" - 3/4" | 1/2" FLOW GLASS FILLED POLYPROPYLENE



65GP Series couplings offer 1/2" flow capacity and are manufactured from a high performance glass filled polypropylene. 65GP couplings have a full flow, non-valved, smooth internal bore that allows for maximum flow with minimal turbulence. 65GP couplings are extremely durable and are well suited for applications that require chemical resistance. 65GP Series couplings interconnect with and are compatible with many other plastic latch type couplings.



## PERFORMANCE RATINGS

- Operating Pressure: Vacuum to 120psi; (8.3bar)
- Temperature: 32°F to 160°F; (0°C to 71°C)
- Flow Capacity: 1/2" Size

## MATERIALS & CONSTRUCTION

- Bodies & Terminations: Glass Filled Polypropylene
- Thumb-latch: Acetal copolymer
- Springs: Stainless Steel
- O-rings: Food Grade EPDM (others available)

Interchangeable with CPC-Colder FFC Series



## FEATURES:

- Audible "click" when connected
- Connects with other plastic latch type couplings
- Extremely durable
- Integral end terminations
- Small and compact
- One hand operation
- Resistant to acids and chemicals
- Latch guard eliminates accidental disconnects
- Stainless steel latch spring
- Large push button



# 65GP

Tubing Size 1/2" - 3/4"  
1/2" Flow Glass Filled Polypro.



### IN-LINE HOSE BARB SOCKET

NON-VALVED	TUBE SIZE	LENGTH	WIDTH	HEIGHT
65GP-S2-12	3/4" H.B.	2.93" (74mm)	1.37" (35mm)	1.45" (37mm)



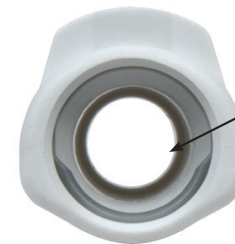
### MALE THREAD PLUG

NON-VALVED	THREAD SIZE	LENGTH	WIDTH	HEIGHT
65GP-PF1-08	1/2" NPT	1.95" (50mm)	1.00" (25mm)	1.00" (25mm)



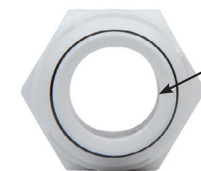
### IN-LINE HOSE BARB PLUG

NON-VALVED	TUBE SIZE	LENGTH	WIDTH	HEIGHT
65GP-PF2-08	1/2" H.B.	1.95" (50mm)	1.00" (25mm)	1.00" (25mm)



.590 I.D.

SOCKET



.540 I.D.

PLUG