

# 60PP SERIES

TUBING SIZE 1/4" - 3/4" | 3/8" FLOW POLYPROPYLENE

## MODERN COOL GREY COLOR



These new 60PP Series couplings bring the highest available 3/8" flow with both valved and non-valved configurations. They are manufactured from medical grade, gamma sterilizable polypropylene. The cost efficient high flow couplings offer a larger, more robust thumb-latch and greater chemical resistance. The new and improved Panel Mount couplings offer a stronger, more reliable design for thicker wall panels and other various applications. All 60PP couplings interconnect with all other 60 Series couplings as well as other similar industry thumb-latch type high flow couplings.

### PERFORMANCE RATINGS

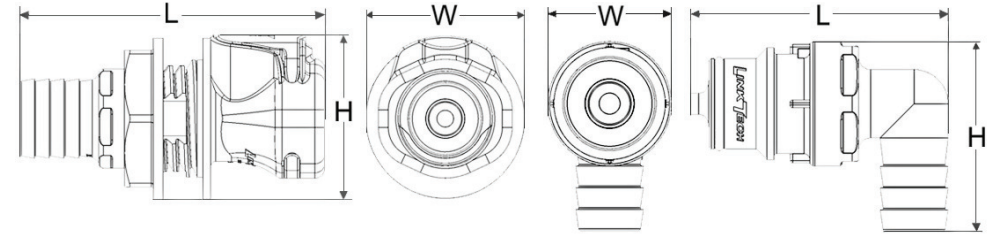
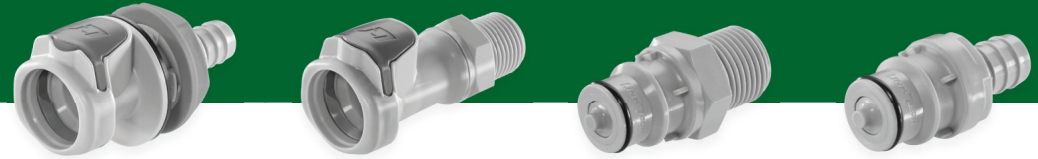
- Operating Pressure: Vacuum to 60 psi; (4.2bar)
- Temperature: 32°F to 160°F (0°C to 71°C)
- Flow Capacity: 3/8" Size

### MATERIALS & CONSTRUCTION

- Bodies & Terminations: Medical Grade Polypropylene
- Internal Valves: Medical Grade Polypropylene
- Internal Valve Springs: 316 Stainless Steel
- Latch Spring: Stainless Steel
- O-rings: Peroxide-cured EPDM (others available)
- Thumb-latch: Medical Grade Polypro.

Please contact us for cleanroom produced versions.

Interchangeable with CPC-Colder HFC12 Series



Reference Dimensions (Scaled Down): L = Length, W = Width, H = Height

### Panel Mount Dimensions

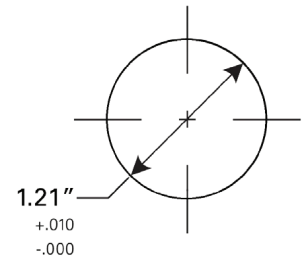
	PANEL OPENING	MAX PANEL THICKNESS	MIN PANEL THICKNESS
SOCKETS	See Drawing	0.3"	0.03"
PLUGS	1.21"	0.3"	0.03"

PANEL NUT HEX SIZE
1.375"

PART NUMBER GUIDE EXAMPLE:

**60 PP V - SE 2 - 08**

FLOW SIZE OR LATCH TYPE MATERIAL VALVE CONFIG. AND O-RING TYPE CONNECTION SIZE



### Flow Rates

The data below shows the liquid flow rates for LinkTech couplings. Each coupling combination was tested at 70° F (21°C).

Specific coupling combination flow rates can be determined by using this formula:

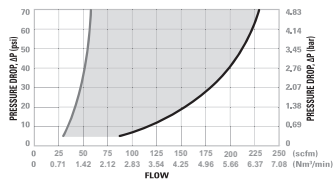
$$Q = C_v \sqrt{\frac{\Delta P}{S}}$$

Q = Flow rate in gallons per minute  
 C<sub>v</sub> = Average flow rates (see chart)  
 ΔP = Pressure drop across coupling (psi)  
 S = Specific gravity of liquid.

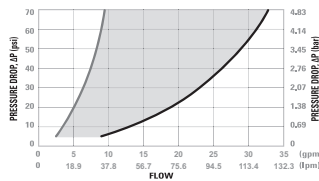
### C<sub>v</sub> Values for 60PP Series Couplings

SOCKETS	60PP-PE2-06	60PPV-PE2-06	60PP-PE2-08	60PPV-PE2-08	60PP-PE4-06	60PPV-PE4-06	60PP-PE4-08	60PPV-PE4-08	60PP-PE1-06	60PPV-PE1-06	60PP-PE1-08	60PPV-PE1-08	60PP-PE2-12	60PPV-PE2-12
60PPV-SE1-06	1.27	1.27	1.62	1.51	1.14	1.14	1.46	1.36	1.80	1.58	1.70	1.65	-	-
60PPV-SE1-08	1.28	1.34	1.62	1.51	1.15	1.24	1.46	1.36	1.81	1.54	1.72	1.56	-	-
60PPV-SE3-06	1.07	1.00	1.17	1.14	0.96	0.90	1.05	1.03	1.33	1.26	1.30	1.24	-	-
60PPV-SE3-08	1.25	1.23	1.61	1.52	1.13	1.11	1.45	1.37	1.79	1.60	1.68	1.56	-	-
60PPV-SE2-06	1.07	1.00	1.17	1.14	0.96	0.90	1.05	1.03	1.33	1.26	1.30	1.24	-	-
60PPV-SE2-08	1.25	1.23	1.61	1.52	1.13	1.11	1.45	1.37	1.79	1.60	1.68	1.56	-	-
60PP-S2-12	-	-	-	-	-	-	-	-	-	-	-	-	3.94	-
60PPV-SE2-12	-	-	-	-	-	-	-	-	-	-	-	-	-	2.04

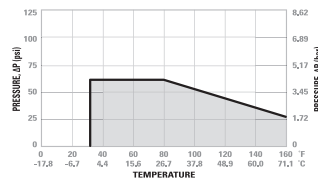
#### 60PP Series Air Flow



#### 60PP Series Water Flow



#### 60PP Series Temperature



Valved Socket & Plug

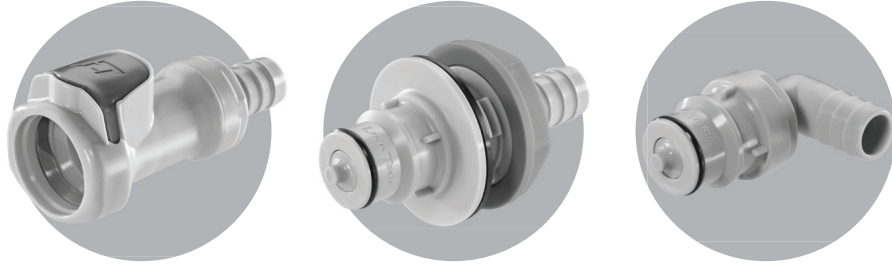
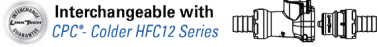


Valved & Non-Valved Coupling Set



Non-Valved Socket & Plug





# 60PP

Tubing Size 1/4" - 3/4"  
3/8" Flow Polypropylene

MALE THREAD SOCKET						
NON-VALVED	VALVED	THREAD SIZE	LENGTH	WIDTH	HEIGHT	
60PP-S1-06	60PPV-SE1-06	3/8" NPT	2.78" (71mm)	1.36" (35mm)	1.44" (37mm)	
60PP-S1-08	60PPV-SE1-08	1/2" NPT	2.93" (74mm)	1.36" (35mm)	1.44" (37mm)	
60PP-S1-12	60PPV-SE1-12	3/4" NPT	3.13" (80mm)	1.36" (35mm)	1.44" (37mm)	

IN-LINE HOSE BARB SOCKET						
NON-VALVED	VALVED	TUBE SIZE	METRIC TUBE	LENGTH	WIDTH	HEIGHT
60PP-S2-04	60PPV-SE2-04	1/4" ID	5.4mm ID	2.78" (71mm)	1.36" (35mm)	1.44" (37mm)
60PP-S2-06	60PPV-SE2-06	3/8" ID	9.5mm ID	2.78" (71mm)	1.36" (35mm)	1.44" (37mm)
60PP-S2-08	60PPV-SE2-08	1/2" ID	12.7mm ID	2.88" (73mm)	1.36" (35mm)	1.44" (37mm)
60PP-S2-12	60PPV-SE2-12	3/4" ID	19.0mm ID	2.93" (74mm)	1.36" (35mm)	1.44" (37mm)

PANEL MOUNT HOSE BARB SOCKET (GASKET SEAL INCLUDED)						
NON-VALVED	VALVED	TUBE SIZE	METRIC TUBE	LENGTH	WIDTH	HEIGHT
60PP-S3-04	60PPV-SE3-04	1/4" ID	5.4mm ID	2.86" (73mm)	1.62" (41mm)	1.65" (42mm)
60PP-S3-06	60PPV-SE3-06	3/8" ID	9.5mm ID	2.86" (73mm)	1.62" (41mm)	1.65" (42mm)
60PP-S3-08	60PPV-SE3-08	1/2" ID	12.7mm ID	3.03" (77mm)	1.62" (41mm)	1.65" (42mm)
60PP-S3-12	60PPV-SE3-12	3/4" ID	19.0mm ID	3.08" (78mm)	1.62" (41mm)	1.65" (42mm)

PANEL MOUNT HOSE BARB ELBOW SOCKET (GASKET SEAL INCLUDED)						
NON-VALVED	VALVED	TUBE SIZE	METRIC TUBE	LENGTH	WIDTH	HEIGHT
60PP-S22-06	60PPV-SE22-06	3/8" ID	9.5mm ID	2.96" (75mm)	1.62" (41mm)	1.73" (44mm)
60PP-S22-08	60PPV-SE22-08	1/2" ID	12.7mm ID	2.96" (75mm)	1.62" (41mm)	1.83" (46mm)



\*External product dimensions are the same with or without a shut off valve

PART NUMBER GUIDE EXAMPLE:

**60 PP V - SE 2 - 08**



# NON-VALVED

MALE THREAD PLUG					
NON-VALVED	THREAD SIZE	LENGTH	WIDTH	HEIGHT	
60PP-PE1-06	3/8" NPT	1.87" (47mm)	1.14" (29mm)	1.00" (25mm)	
60PP-PE1-08	1/2" NPT	2.02" (51mm)	1.14" (29mm)	1.00" (25mm)	
60PP-PE1-12	3/4" NPT	2.22" (56mm)	1.21" (31mm)	1.05" (27mm)	

IN-LINE HOSE BARB PLUG					
NON-VALVED	TUBE SIZE	METRIC TUBE	LENGTH	WIDTH	HEIGHT
60PP-PE2-04	1/4" ID	5.4mm ID	1.87" (47mm)	1.00" (25mm)	1.00" (25mm)
60PP-PE2-06	3/8" ID	9.5mm ID	1.87" (47mm)	1.00" (25mm)	1.00" (25mm)
60PP-PE2-08	1/2" ID	12.7mm ID	1.97" (50mm)	1.00" (25mm)	1.00" (25mm)
60PP-PE2-12	3/4" ID	19.0mm ID	2.02" (51mm)	1.00" (25mm)	1.00" (25mm)

PANEL MOUNT HOSE BARB PLUG (GASKET SEAL INCLUDED)					
NON-VALVED	TUBE SIZE	METRIC TUBE	LENGTH	WIDTH	HEIGHT
60PP-PE3-04	1/4" ID	5.4mm ID	2.74" (70mm)	1.62" (41mm)	1.62" (41mm)
60PP-PE3-06	3/8" ID	9.5mm ID	2.74" (70mm)	1.62" (41mm)	1.62" (41mm)
60PP-PE3-08	1/2" ID	12.7mm ID	2.84" (72mm)	1.62" (41mm)	1.62" (41mm)
60PP-PE3-12	3/4" ID	19.0mm ID	2.89" (73mm)	1.62" (41mm)	1.62" (41mm)

PANEL MOUNT HOSE BARB ELBOW PLUG (GASKET SEAL INCLUDED)					
NON-VALVED	TUBE SIZE	METRIC TUBE	LENGTH	WIDTH	HEIGHT
60PP-PE22-06	3/8" ID	9.5mm ID	2.86" (73mm)	1.62" (41mm)	1.73" (44mm)
60PP-PE22-08	1/2" ID	12.7mm ID	2.86" (73mm)	1.62" (41mm)	1.83" (46mm)

ELBOW HOSE BARB PLUG					
NON-VALVED	TUBE SIZE	METRIC TUBE	LENGTH	WIDTH	HEIGHT
60PP-PE4-06	3/8" ID	9.5mm ID	1.94" (49mm)	1.00" (25mm)	1.40" (36mm)
60PP-PE4-08	1/2" ID	12.7mm ID	1.94" (49mm)	1.00" (25mm)	1.50" (38mm)

# VALVED

MALE THREAD PLUG					
VALVED	THREAD SIZE	LENGTH	WIDTH	HEIGHT	
60PPV-PE1-06	3/8" NPT	2.01" (51mm)	1.14" (29mm)	1.00" (25mm)	
60PPV-PE1-08	1/2" NPT	2.16" (55mm)	1.14" (29mm)	1.00" (25mm)	
60PPV-PE1-12	3/4" NPT	2.36" (60mm)	1.21" (31mm)	1.05" (27mm)	

IN-LINE HOSE BARB PLUG					
VALVED	TUBE SIZE	METRIC TUBE	LENGTH	WIDTH	HEIGHT
60PPV-PE2-04	1/4" ID	5.4mm ID	2.01" (51mm)	1.00" (25mm)	1.00" (25mm)
60PPV-PE2-06	3/8" ID	9.5mm ID	2.01" (51mm)	1.00" (25mm)	1.00" (25mm)
60PPV-PE2-08	1/2" ID	12.7mm ID	2.11" (54mm)	1.00" (25mm)	1.00" (25mm)
60PPV-PE2-12	3/4" ID	19.0mm ID	2.16" (55mm)	1.00" (25mm)	1.00" (25mm)

PANEL MOUNT HOSE BARB PLUG (GASKET SEAL INCLUDED)					
VALVED	TUBE SIZE	METRIC TUBE	LENGTH	WIDTH	HEIGHT
60PPV-PE3-04	1/4" ID	5.4mm ID	2.88" (73mm)	1.62" (41mm)	1.62" (41mm)
60PPV-PE3-06	3/8" ID	9.5mm ID	2.88" (73mm)	1.62" (41mm)	1.62" (41mm)
60PPV-PE3-08	1/2" ID	12.7mm ID	2.98" (76mm)	1.62" (41mm)	1.62" (41mm)
60PPV-PE3-12	3/4" ID	19.0mm ID	3.03" (77mm)	1.62" (41mm)	1.62" (41mm)

PANEL MOUNT HOSE BARB ELBOW PLUG (GASKET SEAL INCLUDED)					
VALVED	TUBE SIZE	METRIC TUBE	LENGTH	WIDTH	HEIGHT
60PPV-PE22-06	3/8" ID	9.5mm ID	3.00" (76mm)	1.62" (41mm)	1.73" (44mm)
60PPV-PE22-08	1/2" ID	12.7mm ID	3.00" (76mm)	1.62" (41mm)	1.83" (46mm)

ELBOW HOSE BARB PLUG					
VALVED	TUBE SIZE	METRIC TUBE	LENGTH	WIDTH	HEIGHT
60PPV-PE4-06	3/8" ID	9.5mm ID	2.08" (53mm)	1.00" (25mm)	1.40" (36mm)
60PPV-PE4-08	1/2" ID	12.7mm ID	2.08" (53mm)	1.00" (25mm)	1.50" (38mm)