

50BAC SERIES

TUBING SIZE 1/4" - 3/8" | 1/4" FLOW ACETAL (POM)



LinkTech's patented breakaway connectors improve safety by allowing users to make a fast and leakfree disconnect with a simple pull of the coupling. The 50BAC Series couplings utilize a new patented design that facilitates two methods of disconnects. These innovative couplings are designed to disconnect when pull force is applied to the coupling or the user can simply depress the thumb-latch. LinkTech's unique 50BAC couplings interconnect with all standard 50AC and 50GP Plugs allowing for reverse field compatibility.

PERFORMANCE RATINGS

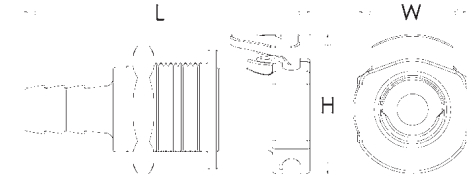
- Operating Pressure: 0psi to 20psi
- Temperature: -40°F to 180°F; (-40°C to 82°C)
- Flow Capacity: 1/4" Size

MATERIALS & CONSTRUCTION

- Bodies & Terminations: Acetal (POM)
- Internal Valves: Acetal (POM)
- Internal Valve Springs: 316 Stainless Steel
- Latch Spring: Stainless Steel
- O-rings: Buna-N (others available)
- Thumb-latch: Acetal (POM)

Please contact us for NSF compliant and cleanroom produced versions.

Connects with 50AC Plugs.

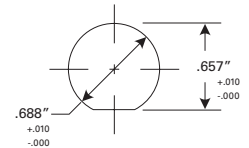


*Illustrations are actual size of product.

Reference Dimensions: L = Length, W = Width, H = Height

Panel Mount Dimensions

	PANEL OPENING	MAX PANEL THICKNESS	MIN PANEL THICKNESS
SOCKETS	See Drawing	0.5"	0.05"
PLUGS	0.688"	0.3"	0.05"



PANEL NUT HEX SIZE	PANEL NUT THREAD
13/16"	11/16" - 24 UNS

PART NUMBER GUIDE EXAMPLE:
50 BAC V - SB 2 - 04
FLOW SIZE OR LATCH TYPE MATERIAL VALVE CONFIG AND O-RING TYPE CONNECTION SIZE

Flow Rates

The data below shows the liquid flow rates for LinkTech couplings. Each coupling combination was tested at 70° F (21°C).

Specific coupling combination flow rates can be determined by using this formula:

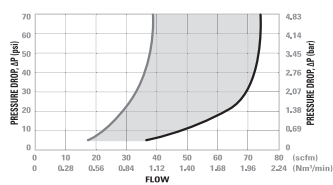
$$Q = C_v \sqrt{\frac{\Delta P}{S}}$$

Q = Flow rate in gallons per minute
 C_v = Average flow rates (see chart)
 ΔP = Pressure drop across coupling (psi)
 S = Specific gravity of liquid.

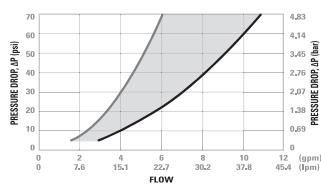
C_v Values for 50BAC Series Couplings

SOCKETS	50BACV-PB2-04	50BAC-PB2-04	50BACV-PB2-06	50BAC-PB2-06	50BACV-PB9-04	50BAC-PB9-04	50BACV-PB9-06	50BAC-PB9-06	50BACV-PB1-04	50BAC-PB1-04	50BACV-PB1-06	50BAC-PB1-06
50BACV-SB2-04	0.42	0.58	0.45	0.78	0.31	0.38	0.45	0.60	0.43	0.79	0.45	0.75
50BAC-S2-04	0.52	0.95	0.70	1.00	0.38	0.39	0.55	0.87	0.65	0.95	0.65	1.00
50BACV-SB2-06	0.43	0.63	0.50	0.89	0.33	0.39	0.62	0.50	0.45	0.95	0.50	0.92
50BAC-S2-06	0.53	0.95	0.80	1.40	0.38	0.39	0.57	1.00	0.70	1.40	0.73	1.40
50BACV-SB3-04	0.42	0.58	0.45	0.78	0.31	0.38	0.45	0.60	0.43	0.79	0.45	0.75
50BAC-S3-04	0.52	0.95	0.70	1.00	0.38	0.39	0.55	0.87	0.65	0.95	0.65	1.00
50BACV-SB3-06	0.43	0.63	0.50	0.89	0.33	0.39	0.62	0.50	0.45	0.95	0.50	0.92
50BAC-S3-06	0.53	0.95	0.80	1.40	0.38	0.39	0.57	1.00	0.70	1.40	0.73	1.40
50BACV-SB1-04	0.41	0.65	0.50	0.81	0.31	0.35	0.48	0.74	0.45	0.80	0.45	0.80
50BAC-S1-04	0.56	0.84	0.83	1.40	0.35	0.40	0.58	1.04	0.75	1.40	0.78	1.40
50BACV-SB1-06	0.43	0.70	0.50	1.03	0.30	0.36	0.70	0.48	0.45	0.97	0.48	1.00
50BAC-S1-06	0.57	0.84	0.82	1.40	0.35	0.40	0.60	1.05	0.75	1.40	0.75	1.40

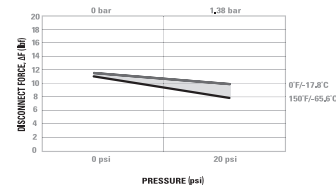
50BAC Series Air Flow



50BAC Series Water Flow



50BAC DISCONNECT FORCE



Valved Socket & Plug



Valved & Non-Valved Coupling Set



Non-Valved Socket & Plug





50BAC

Tubing Size 1/4" - 3/8"
1/4" Flow Acetal (POM)

MALE THREAD SOCKET

NON-VALVED	VALVED	THREAD SIZE	LENGTH	WIDTH	HEIGHT
50BAC-S1-04	50BACV-SB1-04	1/4" NPT	1.4" (36mm)	.75" (19mm)	.94" (24mm)
50BAC-S1-06	50BACV-SB1-06	3/8" NPT	1.4" (36mm)	.75" (19mm)	.94" (24mm)

MIN-LINE HOSE BARB SOCKET, SHORT BODY

NON-VALVED	TUBE SIZE	METRIC TUBE	LENGTH	WIDTH	HEIGHT
50BAC-S2-04	1/4" ID	6.4mm ID	1.35" (34mm)	.75" (19mm)	.94" (24mm)
50BAC-S2-06	3/8" ID	9.5mm ID	1.35" (34mm)	.75" (19mm)	.94" (24mm)

IN-LINE HOSE BARB SOCKET, LONG BODY

NON-VALVED	VALVED	TUBE SIZE	METRIC TUBE	LENGTH	WIDTH	HEIGHT
50BAC-S2-04LB	50BACV-SB2-04	1/4" ID	6.4mm ID	2.02" (51mm)	.75" (19mm)	.94" (24mm)
50BAC-S2-05LB	50BACV-SB2-05	5/16" ID	7.9mm ID	2.02" (51mm)	.75" (19mm)	.94" (24mm)
50BAC-S2-06LB	50BACV-SB2-06	3/8" ID	9.5mm ID	2.02" (51mm)	.75" (19mm)	.94" (24mm)

IN-LINE PTF SOCKET, LONG BODY

NON-VALVED	VALVED	TUBE SIZE	METRIC TUBE	LENGTH	WIDTH	HEIGHT
50BAC-S9-04LB	50BACV-SB9-04	1/4" OD, .17" ID	6.4mm OD, 4.3mm ID	1.95" (50mm)	.75" (19mm)	.93" (24mm)
50BAC-S9-06LB	50BACV-SB9-06	3/8" OD, .25" ID	9.5mm OD, 6.4mm ID	2.05" (52mm)	.75" (19mm)	.93" (24mm)

PANEL MOUNT HOSE BARB SOCKET (GASKET SOLD SEPARATELY)

NON-VALVED	VALVED	TUBE SIZE	METRIC TUBE	LENGTH	WIDTH	HEIGHT
50BAC-S3-04	50BACV-SB3-04	1/4" ID	6.4mm ID	2.10" (53mm)	.90" (23mm)	1.05" (27mm)
50BAC-S3-05	50BACV-SB3-05	5/16" ID	7.9mm ID	2.10" (53mm)	.90" (23mm)	1.05" (27mm)
50BAC-S3-06	50BACV-SB3-06	3/8" ID	9.5mm ID	2.10" (53mm)	.90" (23mm)	1.05" (27mm)

PANEL MOUNT PTF SOCKET (GASKET SOLD SEPARATELY)

NON-VALVED	VALVED	TUBE SIZE	METRIC TUBE	LENGTH	WIDTH	HEIGHT
50BAC-S8-04	50BACV-SB8-04	1/4" OD, .17" ID	6.4mm OD, 4.3mm ID	1.97" (50mm)	.90" (23mm)	1.05" (27mm)
50BAC-S8-06	50BACV-SB8-06	3/8" OD, .25" ID	9.5mm OD, 6.4mm ID	2.1" (53mm)	.90" (23mm)	1.05" (27mm)

PART NUMBER GUIDE EXAMPLE:
50 BAC V - SB 2 - 04

FLOW SIZE OR LATCH TYPE MATERIAL VALVE CONFIG. AND O-RING TYPE CONNECTION SIZE



SAFELY DISCONNECTS WHEN PULLED OR BY DEPRESSING THE THUMB-LATCH



*External product dimensions are the same with or without a shut off valve

IMPROVES SAFETY BY ALLOWING A FAST, LEAK-FREE DISCONNECTION



PATENTED BREAKAWAY TECHNOLOGY

All 50BAC Sockets connect with any 50AC, 50PP, and 50GP Plugs.