

50PP SERIES

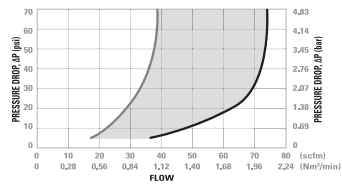
TUBING SIZE 1/4" - 3/8" | 1/4" FLOW POLYPROPYLENE



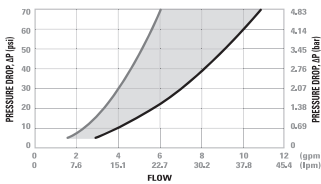
ADVANCED PLASTIC LATCH

50PP Series couplings offer 1/4" flow and are produced from medical grade gamma sterilizable polypropylene. The 50PP Series polypropylene couplings offer greater chemical resistance and they are available in both valved and non-valved configurations. All 50PP couplings interconnect with all other 50 Series couplings as well as other similar industry thumb-latch type couplings.

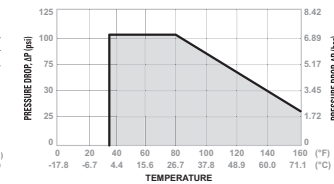
50PP Series Air Flow



50PP Series Water Flow



50PP Series Temperature



Valved Socket & Plug



Valved & Non-Valved Coupling Set



Non-Valved Socket & Plug



PERFORMANCE RATINGS

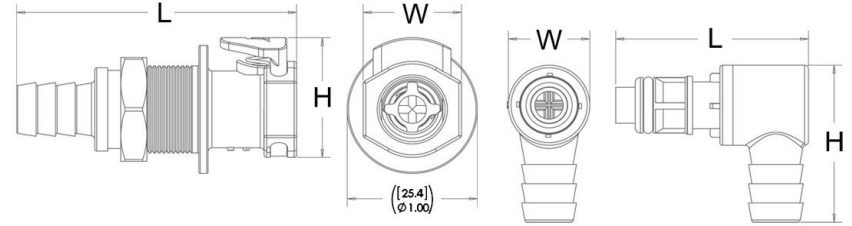
- Operating Pressure: Vacuum to 100 psi; (7.2bar)
- Temperature: 32°F to 160°F (0°C to 71°C)
- Flow Capacity: 1/4" Size

MATERIALS & CONSTRUCTION

- Bodies & Terminations: Medical Grade Polypropylene
- Internal Valves: Medical Grade Polypropylene
- Internal Valve Springs: 316 Stainless Steel
- Latch Spring: Stainless Steel
- O-rings: Peroxide-cured EPDM (others available)
- Thumb-latch: Medical Grade Polypro.

Please contact us for cleanroom produced versions.

Interchangeable with CPC®-Colder EFC12 Series



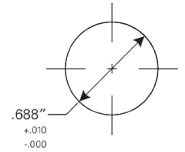
*Illustrations are actual size of product.

Reference Dimensions: L = Length, W = Width, H = Height

Panel Mount Dimensions

	PANEL OPENING	MAX PANEL THICKNESS	MIN PANEL THICKNESS
SOCKETS	See Drawing	0.5"	0.05"

PANEL NUT HEX SIZE	PANEL NUT THREAD
13/16"	11/16" - 24 UNS



PART NUMBER GUIDE EXAMPLE:

50 PP V - PE 2 - 04

FLOW SIZE OR LATCH TYPE | MATERIAL | VALVE | CONFIG. AND O-RING | TYPE | CONNECTION SIZE

Flow Rates

The data below shows the liquid flow rates for LinkTech couplings. Each coupling combination was tested at 70° F (21°C).

Specific coupling combination flow rates can be determined by using this formula:

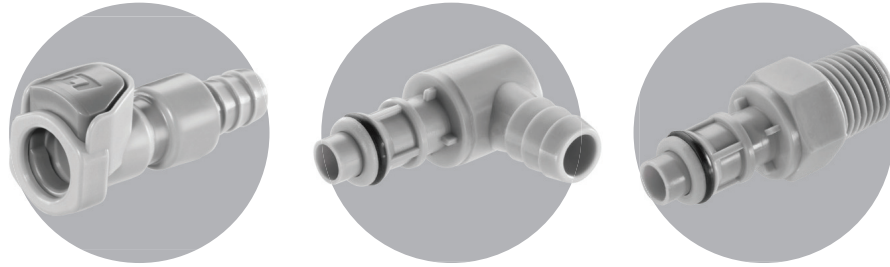
$$Q = C_v \sqrt{\frac{\Delta P}{S}}$$

Q = Flow rate in gallons per minute
 C_v = Average flow rates (see chart)
 ΔP = Pressure drop across coupling (psi)
 S = Specific gravity of liquid.

C_v Values for 50PP Series Couplings

SOCKETS	50PPX-PE2-04	50PPV-PE2-04	50PPX-PE2-06	50PPV-PE2-06	50PPX-PE1-04	50PPV-PE1-04	50PPX-PE1-06	50PPV-PE1-06	50PPV-PE4-04	50PPV-PE4-06
50PPV-SE2-04	0.58	0.42	0.78	0.45	0.79	0.43	0.75	0.45	0.45	0.50
50PPV-SE2-06	0.63	0.43	0.89	0.50	0.95	0.45	0.92	0.50	0.45	0.69
50PPV-SE3-04	0.58	0.42	0.78	0.45	0.79	0.43	0.75	0.45	0.45	0.50
50PPV-SE3-06	0.63	0.43	0.89	0.50	0.95	0.45	0.92	0.50	0.45	0.69

Interchangeable with
CPC® - Colder EFC12 Series



50PP

Tubing Size 1/4" - 3/8"
1/4" Flow Polypropylene

VALVED	IN-LINE HOSE BARB SOCKET				
	TUBE SIZE	METRIC TUBE	LENGTH	WIDTH	HEIGHT
50PPV-SE2-04	1/4" ID	6.4mm ID	2.01" (51mm)	.76" (19mm)	.94" (24mm)
50PPV-SE2-06	3/8" ID	9.5mm ID	2.01" (51mm)	.76" (19mm)	.94" (24mm)

VALVED	PANEL MOUNT HOSE BARB SOCKET (GASKET SEAL INCLUDED)				
	TUBE SIZE	METRIC TUBE	LENGTH	WIDTH	HEIGHT
50PPV-SE3-04	1/4" ID	6.4mm ID	2.14" (54mm)	1.00" (25mm)	.94" (24mm)
50PPV-SE3-06	3/8" ID	9.5mm ID	2.14" (54mm)	1.00" (25mm)	.94" (24mm)

PART NUMBER GUIDE EXAMPLE:

50 PP V - PE 2 - 04

| FLOW SIZE OR LATCH TYPE MATERIAL VALVE CONFIG. AND O-RING TYPE CONNECTION SIZE

Interchangeable with
CPC® - Colder EFC12 Series

NON-VALVED

NON-VALVED	MALE THREAD PLUG				
	THREAD SIZE	LENGTH	WIDTH	HEIGHT	
50PPX-PE1-04	1/4" NPT	1.60" (41mm)	.63" (16mm)	.63" (16mm)	
50PPX-PE1-06	3/8" NPT	1.60" (41mm)	.75" (19mm)	.75" (19mm)	

NON-VALVED	IN-LINE HOSE BARB PLUG				
	TUBE SIZE	METRIC TUBE	LENGTH	WIDTH	HEIGHT
50PPX-PE2-04	1/4" ID	6.4mm ID	1.89" (48mm)	.70" (18mm)	.70" (18mm)
50PPX-PE2-06	3/8" ID	9.5mm ID	1.76" (45mm)	.70" (18mm)	.70" (18mm)

NON-VALVED	ELBOW HOSE BARB PLUG				
	TUBE SIZE	METRIC TUBE	LENGTH	WIDTH	HEIGHT
50PPX-PE4-04	1/4" ID	6.4mm ID	1.29" (33mm)	.63" (16mm)	1.23" (31mm)
50PPX-PE4-06	3/8" ID	9.5mm ID	1.33" (34mm)	.63" (16mm)	1.23" (31mm)

VALVED

NON-VALVED	MALE THREAD PLUG				
	THREAD SIZE	LENGTH	WIDTH	HEIGHT	
50PPV-PE1-04	1/4" NPT	1.75" (44mm)	.63" (16mm)	.63" (16mm)	
50PPV-PE1-06	3/8" NPT	1.75" (44mm)	.75" (19mm)	.75" (19mm)	

NON-VALVED	IN-LINE HOSE BARB PLUG				
	TUBE SIZE	METRIC TUBE	LENGTH	WIDTH	HEIGHT
50PPV-PE2-04	1/4" ID	6.4mm ID	2.04" (52mm)	.70" (18mm)	.70" (18mm)
50PPV-PE2-06	3/8" ID	9.5mm ID	1.91" (49mm)	.70" (18mm)	.70" (18mm)

NON-VALVED	ELBOW HOSE BARB PLUG				
	TUBE SIZE	METRIC TUBE	LENGTH	WIDTH	HEIGHT
50PPV-PE4-04	1/4" ID	6.4mm ID	1.44" (37mm)	.63" (16mm)	1.23" (31mm)
50PPV-PE4-06	3/8" ID	9.5mm ID	1.48" (38mm)	.63" (16mm)	1.23" (31mm)