

50AC SERIES

TUBING SIZE 1/4" - 3/8" | 1/4" FLOW ACETAL (POM)



PERFORMANCE RATINGS

- Operating Pressure: Vacuum to 120psi; (8.3bar)
- Temperature: -40°F to 180°F; (-40°C to 82°C)
- Flow Capacity: 1/4" Size

MATERIALS & CONSTRUCTION

- Bodies & Terminations: Acetal (POM)
- Internal Valves: Acetal (POM)
- Internal Valve Springs: 316 Stainless Steel
- Latch Spring: Stainless Steel
- O-rings: Buna-N (others available)
- Thumb-latch: Acetal (POM)



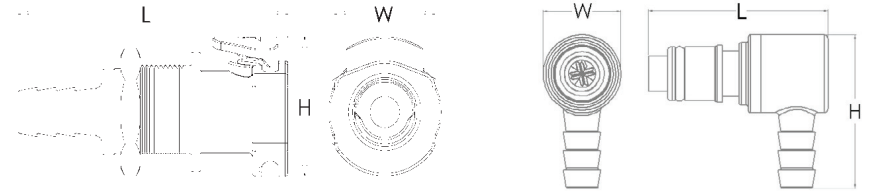
Interchangeable with CPC-Colder APC Series



Please contact us for NSF compliant and cleanroom produced versions.

LEGACY METAL LATCH

These 1/4" flow size couplings are produced in a durable natural Acetal (POM) thermoplastic. They feature a more durable plastic thumb-latch design. They are available in both valved and non-valved configurations. All 50AC couplings interconnect with all other 50PP and 50GP couplings as well as other similar industry thumb-latch type couplings.

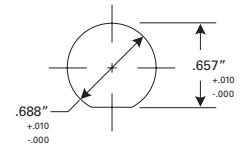


*Illustrations are actual size of product.

Reference Dimensions: L = Length, W = Width, H = Height

Panel Mount Dimensions

	PANEL OPENING	MAX PANEL THICKNESS	MIN PANEL THICKNESS
SOCKETS	See Drawing	0.5"	0.05"
PLUGS	0.688"	0.3"	0.05"



PANEL NUT HEX SIZE	PANEL NUT THREAD
13/16"	11/16" - 24 UNS

PART NUMBER GUIDE EXAMPLE:
50 AC V - PB 2 - 04

FLOW SIZE OR LATCH TYPE | MATERIAL | VALVE | CONFIG AND O-RING | TYPE | CONNECTION SIZE

Flow Rates

The data below shows the liquid flow rates for LinkTech couplings. Each coupling combination was tested at 70° F (21°C).

Specific coupling combination flow rates can be determined by using this formula:

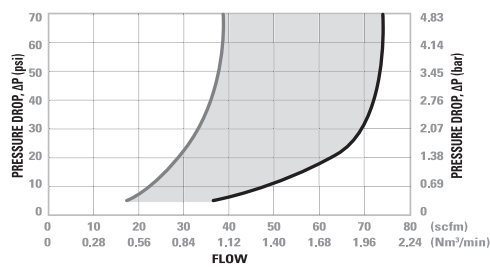
$$Q = C_v \sqrt{\frac{\Delta P}{S}}$$

Q = Flow rate in gallons per minute
 C_v = Average flow rates (see chart)
 ΔP = Pressure drop across coupling (psi)
 S = Specific gravity of liquid.

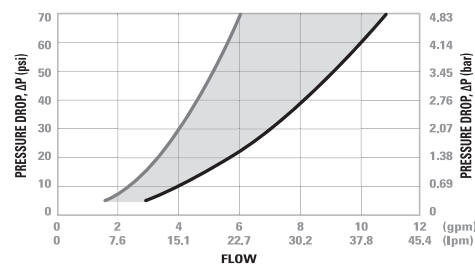
C_v Values for 50AC Series Couplings

SOCKETS	50ACV-PB2-04	50AC-PB2-04	50ACV-PB2-06	50AC-PB2-06	50ACV-PB9-04	50AC-PB9-04	50ACV-PB9-06	50AC-PB9-06	50ACV-PB1-04	50AC-PB1-04	50ACV-PB1-06	50AC-PB1-06
50ACV-SB2-04	0.42	0.58	0.45	0.78	0.31	0.38	0.45	0.60	0.43	0.79	0.45	0.75
50AC-S2-04	0.52	0.95	0.70	1.00	0.38	0.39	0.55	0.87	0.65	0.95	0.65	1.00
50ACV-SB2-06	0.43	1.30	0.50	0.89	0.33	0.39	0.62	1.20	0.45	0.95	0.50	0.92
50AC-S2-06	0.53	1.40	0.80	1.40	0.38	0.39	0.57	1.00	0.70	2.00	0.73	1.90
50ACV-SB3-04	0.42	0.58	0.45	0.78	0.31	0.38	0.45	0.60	0.43	0.79	0.45	0.75
50AC-S3-04	0.52	0.95	0.70	1.00	0.38	0.39	0.55	0.87	0.65	0.95	0.65	1.00
50ACV-SB3-06	0.43	0.63	0.50	0.89	0.33	0.39	0.62	0.50	0.45	0.95	0.50	0.92
50AC-S3-06	0.53	0.95	0.80	1.40	0.38	0.39	0.57	1.00	0.70	1.40	0.73	1.40
50ACV-SB1-04	0.41	0.65	0.50	0.81	0.31	0.35	0.48	0.74	0.45	0.80	0.45	0.80
50AC-S1-04	0.56	0.84	0.83	2.00	0.35	0.40	0.58	1.04	0.75	1.90	0.78	1.40
50ACV-SB1-06	0.43	0.70	0.50	1.03	0.30	0.36	0.70	1.30	0.45	0.97	0.48	1.00
50AC-S1-06	0.57	0.84	0.82	1.40	0.35	0.40	0.60	1.05	0.75	2.00	0.75	1.40

50AC Series Air Flow



50AC Series Water Flow



Valved Socket & Plug | Valved & Non-Valved Coupling Set | Non-Valved Socket & Plug



Interchangeable with
CPC® Colder APC Series



50AC

Tubing Size 1/4" - 3/8"
1/4" Flow Acetal (POM)



MALE THREAD SOCKET

NON-VALVED	VALVED	THREAD SIZE	LENGTH	WIDTH	HEIGHT
50AC-S1-04	50ACV-SB1-04	1/4" NPT	1.4" (36mm)	.75" (19mm)	.94" (24mm)
50AC-S1-06	50ACV-SB1-06	3/8" NPT	1.4" (36mm)	.75" (19mm)	.94" (24mm)



MALE THREAD SOCKET, WITH LATCH GUARD

NON-VALVED	VALVED	THREAD SIZE	LENGTH	WIDTH	HEIGHT
50AC-S35107	50ACV-S35107	1/4" NPT	1.4" (36mm)	.75" (19mm)	.94" (24mm)



IN-LINE HOSE BARB SOCKET, SHORT BODY

NON-VALVED	TUBE SIZE	METRIC TUBE	LENGTH	WIDTH	HEIGHT
50AC-S2-04	1/4" ID	6.4mm ID	1.35" (34mm)	.75" (19mm)	.94" (24mm)
50AC-S2-06	3/8" ID	9.5mm ID	1.35" (34mm)	.75" (19mm)	.94" (24mm)



IN-LINE HOSE BARB SOCKET, LONG BODY

NON-VALVED	VALVED	TUBE SIZE	METRIC TUBE	LENGTH	WIDTH	HEIGHT
50AC-S2-04LB	50ACV-SB2-04	1/4" ID	6.4mm ID	2.02" (51mm)	.75" (19mm)	.94" (24mm)
50AC-S2-05LB	50ACV-SB2-05	5/16"	7.9mm ID	2.02" (51mm)	.75" (19mm)	.94" (24mm)
50AC-S2-06LB	50ACV-SB2-06	3/8" ID	9.5mm ID	2.02" (51mm)	.75" (19mm)	.94" (24mm)

Interchangeable with
CPC® Colder APC Series



IN-LINE PTF SOCKET, LONG BODY

NON-VALVED	VALVED	TUBE SIZE	METRIC TUBE	LENGTH	WIDTH	HEIGHT
50AC-S8-04LB	50ACV-SB8-04	1/4" OD, .17" ID	6.4mm OD, 4.3mm ID	1.95" (50mm)	.75" (19mm)	.93" (24mm)
50AC-S8-06LB	50ACV-SB8-06	3/8" OD, .25" ID	9.5mm OD, 6.4mm ID	2.05" (52mm)	.75" (19mm)	.93" (24mm)



PANEL MOUNT HOSE BARB SOCKET

NON-VALVED	VALVED	TUBE SIZE	METRIC TUBE	LENGTH	WIDTH	HEIGHT
50AC-S3-04	50ACV-SB3-04	1/4" ID	6.4mm ID	2.1" (53mm)	.90" (23mm)	1.05" (27mm)
50AC-S3-05	50ACV-SB3-05	5/16" ID	7.9mm ID	2.1" (53mm)	.90" (23mm)	1.05" (27mm)
50AC-S3-06	50ACV-SB3-06	3/8" ID	9.5mm ID	2.1" (53mm)	.90" (23mm)	1.05" (27mm)



PANEL MOUNT PTF SOCKET

NON-VALVED	VALVED	TUBE SIZE	METRIC TUBE	LENGTH	WIDTH	HEIGHT
50AC-S8-04	50ACV-SB8-04	1/4" OD, .17" ID	6.4mm OD, 4.3mm ID	1.97" (50mm)	.90" (23mm)	1.05" (27mm)
50AC-S8-06	50ACV-SB8-06	3/8" OD, .25" ID	9.5mm OD, 6.4mm ID	2.1" (53mm)	.90" (23mm)	1.05" (27mm)



IN-LINE PUSH-IN SOCKET

NON-VALVED	VALVED	TUBE SIZE	METRIC TUBE	LENGTH	WIDTH	HEIGHT
50AC-S17-04	50ACV-SB17-04	1/4" OD	6.4mm OD	2.06" (52mm)	.76" (19mm)	.94" (24mm)



PANEL MOUNT PUSH-IN SOCKET

NON-VALVED	VALVED	TUBE SIZE	METRIC TUBE	LENGTH	WIDTH	HEIGHT
50AC-S18-04	50ACV-SB18-04	1/4" OD	6.4mm OD	2.09" (53mm)	.87" (22mm)	1.05" (27mm)



*External product dimensions are the same with or without a shut off valve

PART NUMBER GUIDE EXAMPLE:

50 AC V - PB 2 - 04

|
 FLOW SIZE OR LATCH TYPE MATERIAL VALVE CONFIG. AND O-RING TYPE CONNECTION SIZE

Interchangeable with
CPC® - Colder APC Series

NON-VALVED



MALE THREAD PLUG

NON-VALVED	THREAD SIZE	LENGTH	WIDTH	HEIGHT
50AC-PB1-04	1/4" NPT	1.40" (36mm)	.55" (14mm)	.55" (14mm)
50AC-PB1-06	3/8" NPT	1.40" (36mm)	.75" (19mm)	.75" (19mm)



IN-LINE HOSE BARB PLUG

NON-VALVED	TUBE SIZE	METRIC TUBE	LENGTH	WIDTH	HEIGHT
50AC-PB2-04	1/4" ID	6.4mm ID	1.35" (34mm)	.70" (18mm)	.70" (18mm)
50AC-PB2-05	5/16" ID	7.9mm ID	1.93" (49mm)	.70" (18mm)	.70" (18mm)
50AC-PB2-06	3/8" ID	9.5mm ID	1.35" (34mm)	.70" (18mm)	.70" (18mm)



IN-LINE PTF PLUG

NON-VALVED	TUBE SIZE	METRIC TUBE	LENGTH	WIDTH	HEIGHT
50AC-PB9-04	1/4" OD, .17" ID	6.4mm OD, 4.3mm ID	1.80" (46mm)	.63" (16mm)	.63" (16mm)
50AC-PB9-06	3/8" OD, .25" ID	9.5mm OD, 6.4mm ID	1.74" (44mm)	.63" (16mm)	.63" (16mm)



ELBOW HOSE BARB PLUG

NON-VALVED	TUBE SIZE	METRIC TUBE	LENGTH	WIDTH	HEIGHT
50AC-PB4-04	1/4" ID	6.4mm ID	1.20" (30mm)	.63" (16mm)	1.28" (33mm)
50AC-PB4-06	3/8" ID	9.5mm ID	1.20" (30mm)	.63" (16mm)	1.28" (33mm)



ELBOW PTF PLUG

NON-VALVED	TUBE SIZE	METRIC TUBE	LENGTH	WIDTH	HEIGHT
50ACX-PB10-04	1/4" OD, .17" ID	6.4mm OD, 4.3mm ID	1.33" (34mm)	.63" (16mm)	1.15" (29mm)
50AC-PB10-06	3/8" OD, .25" ID	9.5mm OD, 6.4mm ID	1.34" (34mm)	.63" (16mm)	1.30" (33mm)



IN-LINE PUSH-IN PLUG

NON-VALVED	TUBE SIZE	METRIC TUBE	LENGTH	WIDTH	HEIGHT
50AC-PB17-04	1/4" OD	6.4mm OD	1.91" (49mm)	.70" (18mm)	.70" (18mm)

PART NUMBER GUIDE EXAMPLE:

50 AC V - PB 2 - 04

FLOW SIZE OR LATCH TYPE	MATERIAL	VALVE	CONFIG. AND O-RING	TYPE	CONNECTION SIZE

Interchangeable with
CPC® - Colder APC Series

VALVED



MALE THREAD PLUG

NON-VALVED	THREAD SIZE	LENGTH	WIDTH	HEIGHT
50ACV-PB1-04	1/4" NPT	1.75" (44mm)	.55" (14mm)	.55" (14mm)
50ACV-PB1-06	3/8" NPT	1.60" (41mm)	.75" (19mm)	.75" (19mm)



IN-LINE HOSE BARB PLUG

NON-VALVED	TUBE SIZE	METRIC TUBE	LENGTH	WIDTH	HEIGHT
50ACV-PB2-04	1/4" ID	6.4mm ID	2.05" (52mm)	.70" (18mm)	.70" (18mm)
50ACV-PB2-05	5/16" ID	7.9mm ID	2.05" (52mm)	.70" (18mm)	.70" (18mm)
50ACV-PB2-06	3/8" ID	9.5mm ID	1.90" (48mm)	.70" (18mm)	.70" (18mm)



IN-LINE PTF PLUG

NON-VALVED	TUBE SIZE	METRIC TUBE	LENGTH	WIDTH	HEIGHT
50ACV-PB9-04	1/4" OD, .17" ID	6.4mm OD, 4.3mm ID	1.96" (50mm)	.63" (16mm)	.63" (16mm)
50ACV-PB9-06	3/8" OD, .25" ID	9.5mm OD, 6.4mm ID	1.89" (48mm)	.63" (16mm)	.63" (16mm)



ELBOW HOSE BARB PLUG

NON-VALVED	TUBE SIZE	METRIC TUBE	LENGTH	WIDTH	HEIGHT
50ACV-PB4-04	1/4" ID	6.4mm ID	1.45" (37mm)	.63" (16mm)	1.28" (33mm)
50ACV-PB4-06	3/8" ID	9.5mm ID	1.48" (38mm)	.63" (16mm)	1.28" (33mm)



ELBOW PTF PLUG

NON-VALVED	TUBE SIZE	METRIC TUBE	LENGTH	WIDTH	HEIGHT
50ACV-PB10-04	1/4" OD, .17" ID	6.4mm OD, 4.3mm ID	1.48" (38mm)	.63" (16mm)	1.15" (29mm)
50ACV-PB10-06	3/8" OD, .25" ID	9.5mm OD, 6.4mm ID	1.50" (38mm)	.63" (16mm)	1.30" (33mm)



IN-LINE PUSH-IN PLUG

NON-VALVED	TUBE SIZE	METRIC TUBE	LENGTH	WIDTH	HEIGHT
50ACV-PB17-04	1/4" OD	6.4mm OD	2.08" (53mm)	.70" (18mm)	.70" (18mm)