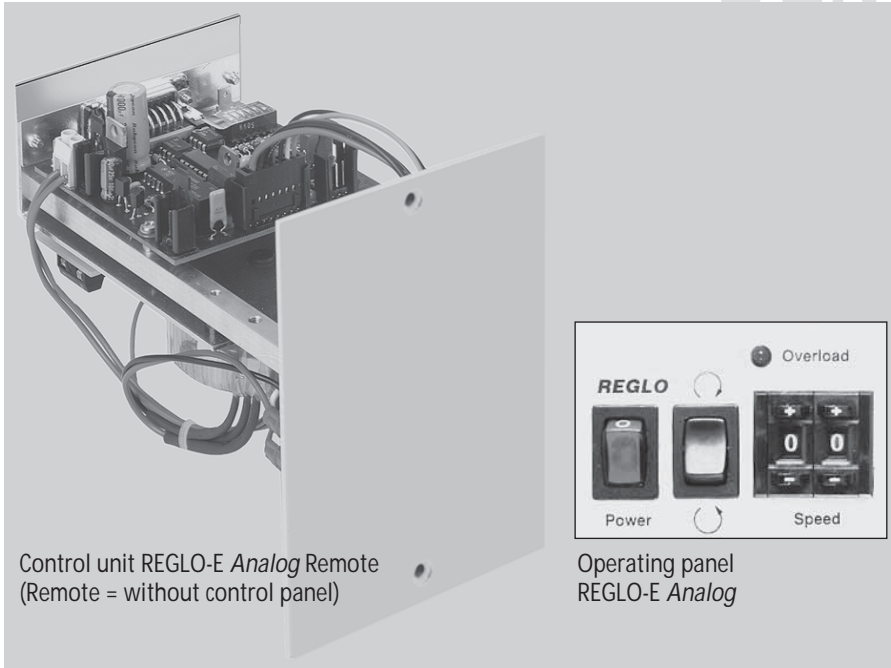
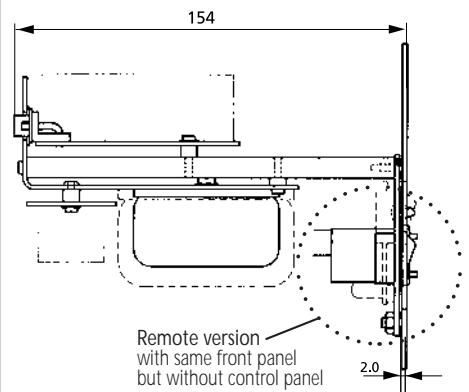


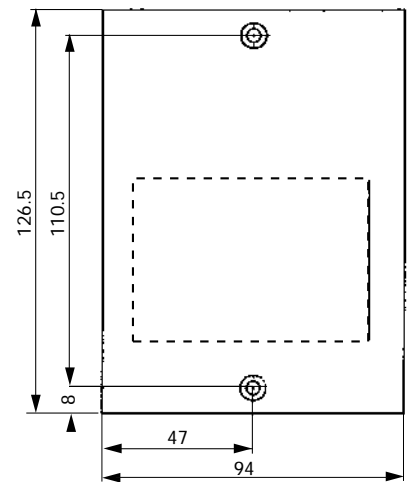
Control unit REGLO-E Analog /-Remote for DC motor with encoder



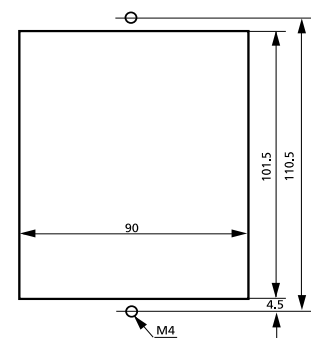
Side view (mm)



Front view (mm)



Mounting cut-out (mm)



Technical specifications

Mains connection	230 V / 50/60 Hz or 115 V / 50/60 Hz (please indicate on your order)
Power consumption	max. 20 W
Weight	0.700 kg

Interfaces

■ Analog input	
Speed control	0-5 V or 0-10 V, 0-20 mA or 4-20 mA
■ Analog output	
Speed output	0-8 kHz (1-2 channels) 0-5 kHz (3-5 channels)
■ Digital input (TTL-level)	
Start/Stop, rotation direction	

Operating panel

- On/Off switch
- Switch for rotation direction
- LED indicator for overload
- 2-digit potentiometer for digital speed setting in 1%-steps, 1-99 %

Ordering information

Model	REGLO-E Analog	REGLO-E Analog Remote
1-2 channels	IS 3186	IS 3269
3-5 channels	IS 3385	IS 3972

Please note

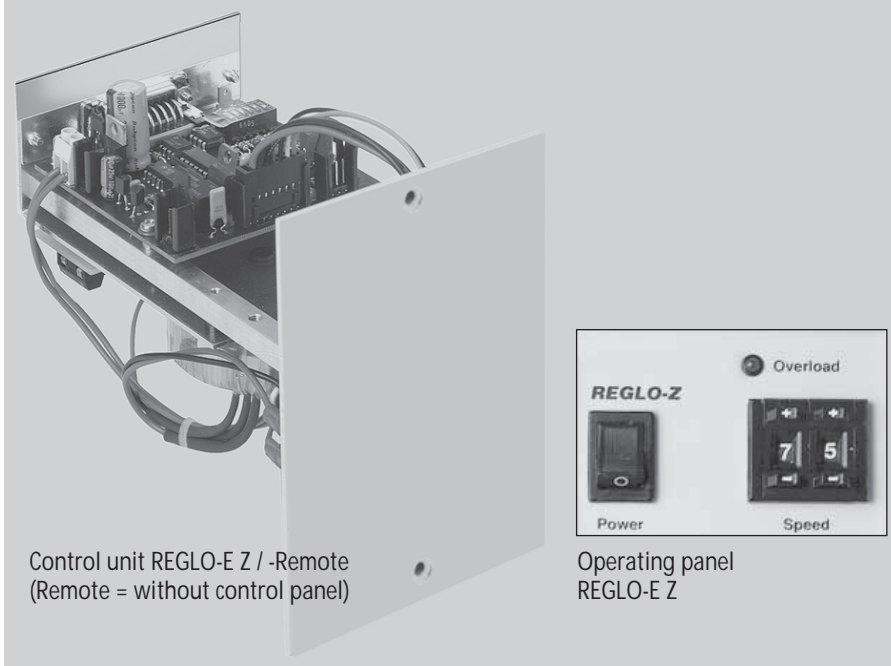
Included with delivery:
data sheet for installation and electrical
connections

Data sheet
08.1
30.09.05

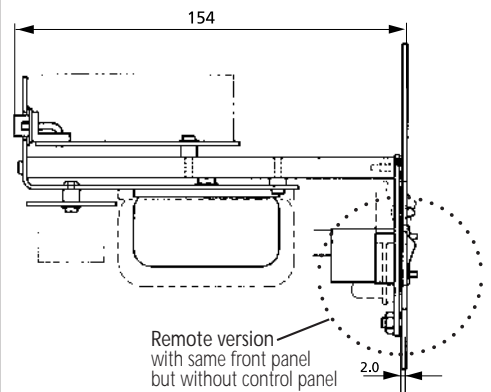
Control unit REGLO-E Z / -Remote

for DC motor with encoder

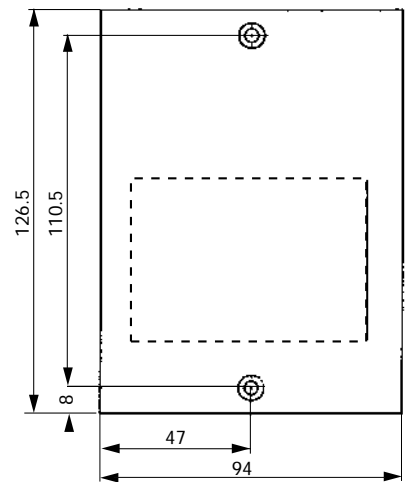
OEM



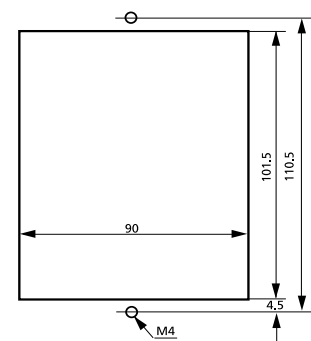
Side view (mm)



Front view (mm)



Mounting cut-out (mm)



Technical specifications

Mains connection	230 V / 50/60 Hz or 115 V / 50/60 Hz (please indicate on your order)
Power consumption	max. 50 W
Weight	0.700 kg

Interfaces

■ Analog input	
Speed control	0-5 V or 0-10 V, 0-20 mA or 4-20 mA
■ Analog output	
Speed output	0-10 kHz
■ Digital input (TTL-level)	
Start/Stop	

Operating panel

- On/Off switch
- LED indicator for overload
- 2-digit potentiometer for digital speed setting in 1 %-steps

Ordering information

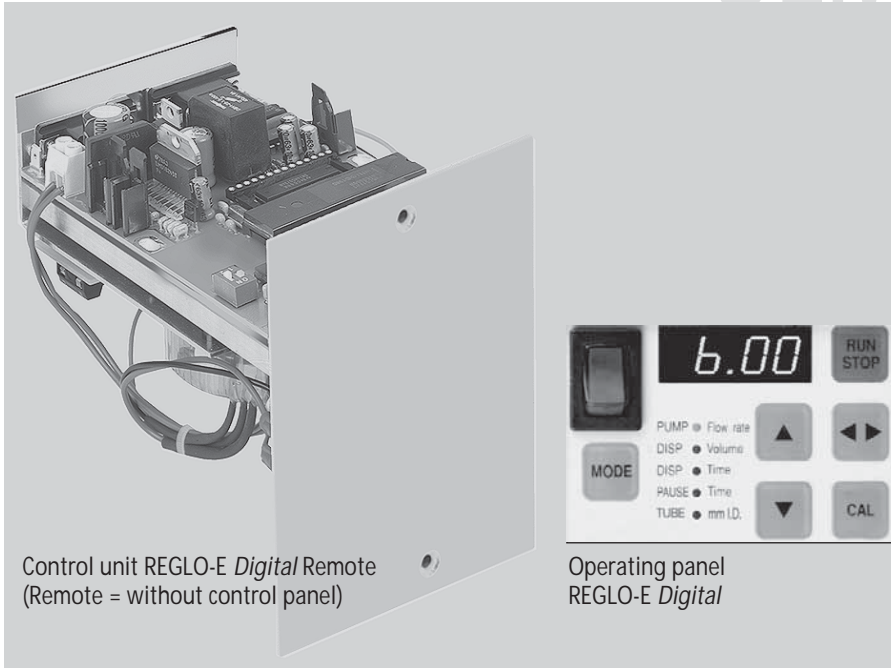
Model	REGLO-E Z	REGLO-E Z Remote
	IS 3973	IS 4016

Please note

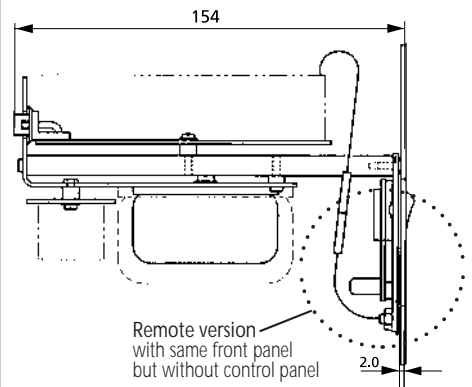
Included with delivery: data sheet for installation and electrical connections

Data sheet
088
30.09.05

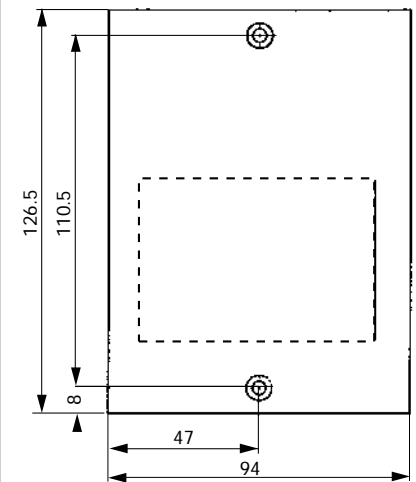
Control unit REGLO-E *Digital I-Remote* for DC motor with encoder



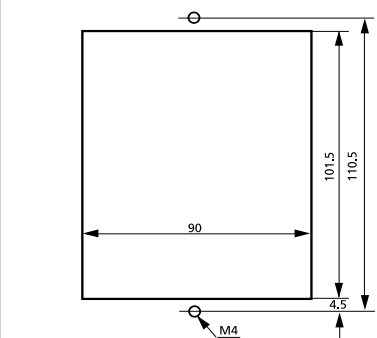
Side view (mm)



Front view (mm)



Mounting cut-out (mm)



Control unit REGLO-E *Digital Remote*
(Remote = without control panel)

Operating panel
REGLO-E *Digital*

Technical specifications

Mains connection	230 V / 50/60 Hz or 115 V / 50/60 Hz (please indicate on your order)
Power consumption	max. 20 W
Weight	0.700 kg

Interfaces

- RS232 in
for controlling via PC
- RS232 out
for cascading up to 8 control units
- Digital input (TTL-level)
Start/Stop, Autostart
- Analog output

Speed output	0-8 kHz (1-2 channels) ¹⁾ 0-5 kHz (3-5 channels)
--------------	--

¹⁾ Only for Remote Version: When ordering please state the number of channels required.

Operating panel

- On/Off switch
- LED display
- Membrane key-pad (6 keys) for:
Run/Stop, Up and Down (value setting),
rotation direction, calibration, operating
mode (MODE key)
- Selectable operating modes:
 - Pumping by speed (rpm)
 - Pumping by flow rate (ml/min)
 - Dispensing by volume (ml)
 - Intermittent dispensing
(repetitive dispensing by volume with
pre-set pause time)
 - Pause time setting (from 0.1s to 999h)
 - Roller back-steps for drip-free dispensing
 - selectable tube sizes
- Calibration functions:
 - Flow rate (ml/min)
 - Dispensing volume (ml)

Ordering information

Model	REGLO-E <i>Digital</i>	REGLO-E <i>Digital Remote</i>
1-5 channels	IS 3187	IS 3257

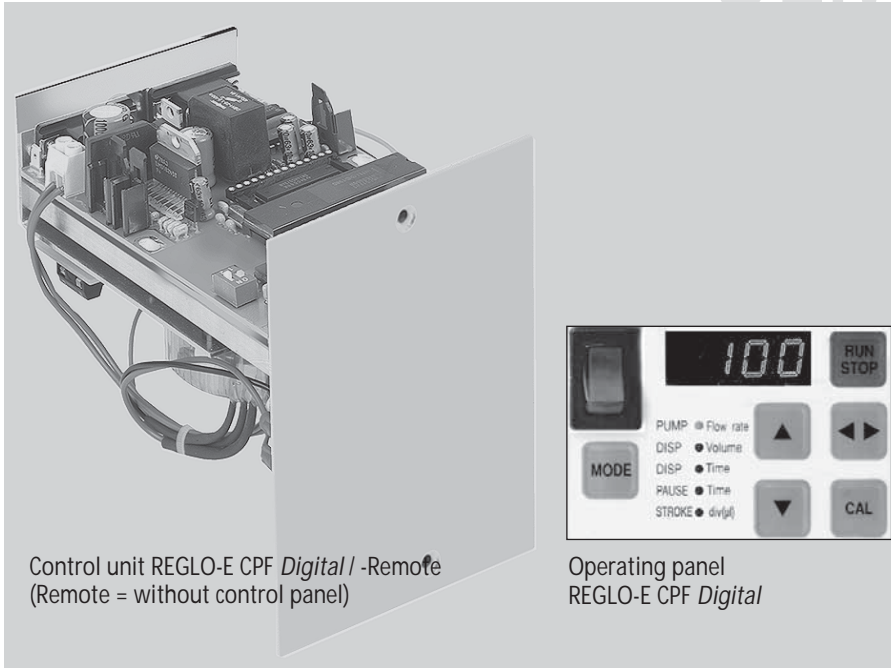
Please note

Included with delivery:
data sheet for installation and electrical
connections

Data sheet
08.2
30.09.05

Control unit REGLO-E CPF *Digital* / -Remote

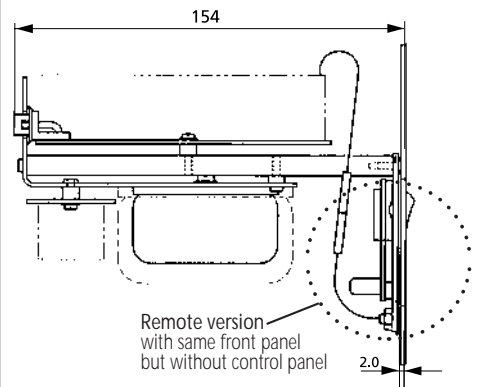
for DC motor with encoder



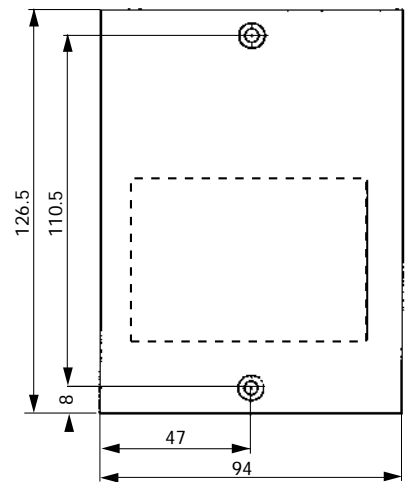
Control unit REGLO-E CPF *Digital* / -Remote
(Remote = without control panel)

Operating panel
REGLO-E CPF *Digital*

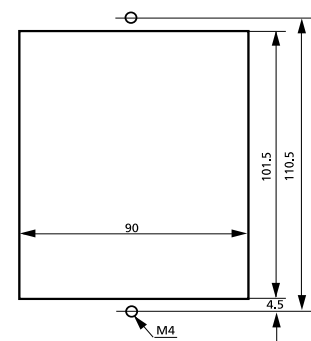
Side view (mm)



Front view (mm)



Mounting cut-out (mm)



Technical specifications

Mains connection	230 V / 50/60 Hz or 115 V / 50/60 Hz (please indicate on your order)
Power consumption	max. 50 W
Weight	0.700 kg

Interfaces

- RS232 in
for controlling via PC
- RS232 out
for cascading up to 8 control units
- Digital input (TTL-level)
Start/Stop, Autostart
- Analog output
Speed output

Operating panel

- On/Off switch
- LED display
- Membrane key-pad (6 keys) for:
Run/Stop, Up and Down (value setting),
rotation direction, calibration, operating
mode (MODE key)
- Selectable operating modes:
 - Pumping by speed (rpm)
 - Pumping by flow rate (ml/min)
 - Dispensing by volume (ml)
 - Intermittent dispensing
(repetitive dispensing by volume with
pre-set pause time)
 - Pause time setting (from 0.1s to 999h)
 - Drip-free dispensing
 - Volume setting of the piston stroke
- Calibration functions:
 - Flow rate (ml/min)
 - Dispensing volume (ml)

Ordering information

Model	REGLO-E CPF <i>Digital</i>	REGLO-E CPF <i>Digital</i>
	IS 3447A	on request

Please note

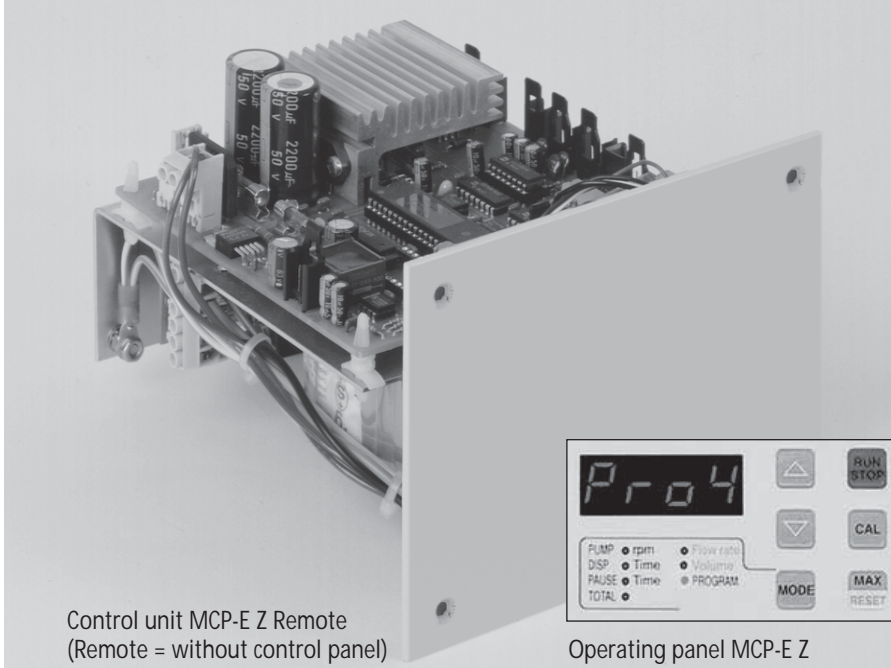
Included with delivery:
data sheet for installation and electrical
connections

Data sheet
089
30.09.05

Control unit MCP-E Z / -Remote

for DC motor with encoder Ecoline-E

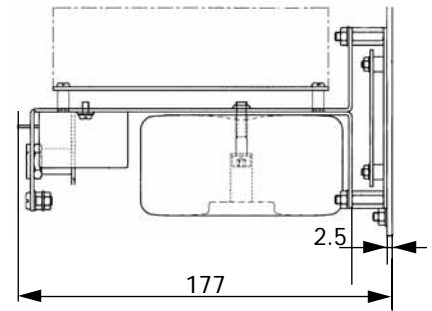
OEM



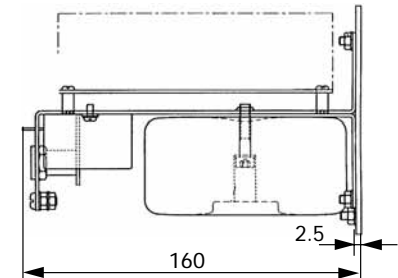
Control unit MCP-E Z Remote
(Remote = without control panel)

Operating panel MCP-E Z

Side view (mm)

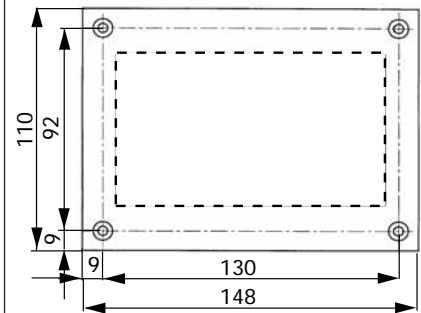


MCP-E Z

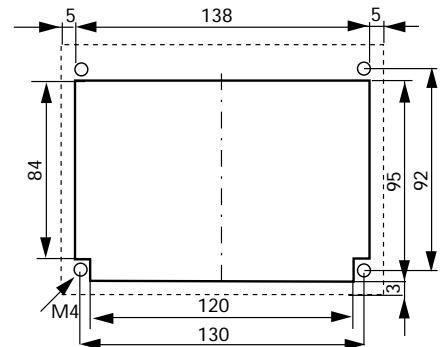


MCP-E Z Remote
with same front panel but without control panel

Front view (mm)



Mounting cut-out (mm)



Technical specifications

Mains connection	230 V / 50 Hz or 115 V / 60 Hz (please indicate on your order)
Power consumption	max. 150 W
Weight	2.3 kg

Interfaces

- RS232 in
for operation controlling via PC
- RS232 out
for cascading up to 8 control units
- Analog input (Speed control)
0-5 or 0-10 V, 0-20 or 4-20 mA
- Analog output (Speed output)
0-10 V_{DC} or 0-12 kHz
- Digital input
start/stop, autostart

Operating panel

- LED display
- Membrane key-pad (6 keys) for:
Run/Stop, Up and Down (value setting),
calibration, operating mode (MODE key),
MAX/MIN Reset
- Memory:
4 sets of operating parameters can be stored
- Selectable operating modes:
 - Pumping by speed (rpm)
 - Pumping by flow rate (ml/min)
 - Dispensing by volume (ml)
 - Dispensing by time (0.1s to 999h)
 - Intermittent dispensing
(repetitive dispensing by volume or time
with pre-set pause time)
 - Pause time setting (from 0.1s to 999h)
 - Number of dispensing cycles
- Calibration functions:
 - Flow rate (ml/min)
 - Dispensing volume (ml)

Ordering information

Model	MCP-E Z	MCP-E Z Remote
	IS 2365	IS 2363
Included with delivery: data sheet for installation and electrical connections		

⚠ IMPORTANT

Active cooling system

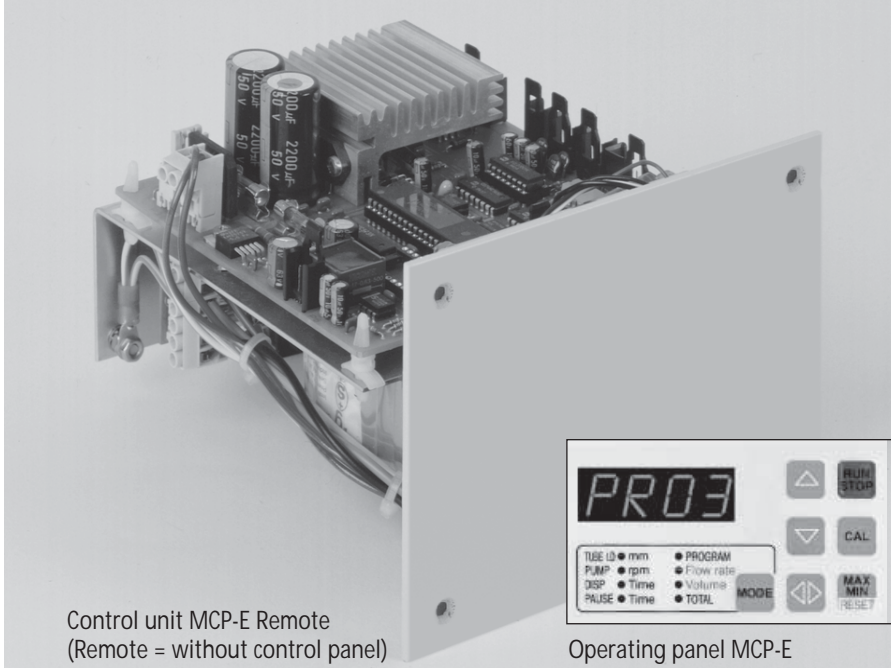
Adequate ventilation (active cooling) must be provided depending on the installation conditions and the operating time.

The buyer and user himself is responsible for sufficient ventilation of ISMATEC® panel-mounted pumps.

Control unit MCP-E / -Remote

for DC motor with encoder Ecoline-E

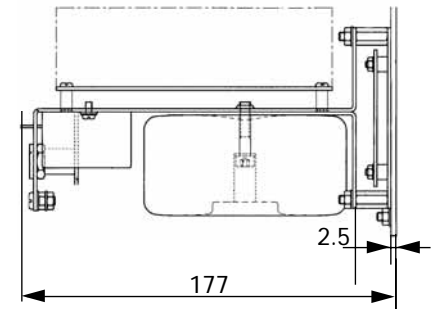
OEM



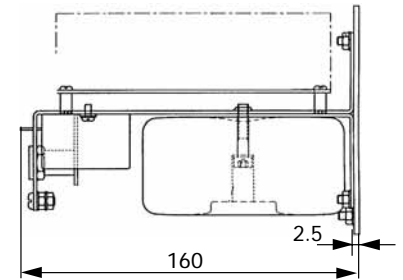
Control unit MCP-E Remote
(Remote = without control panel)

Operating panel MCP-E

Side view (mm)

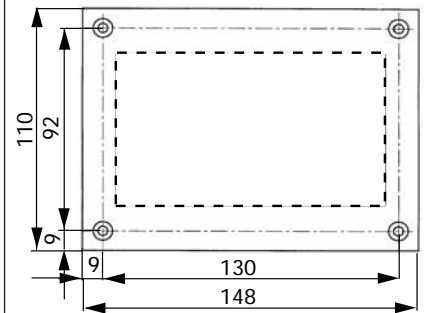


MCP-E

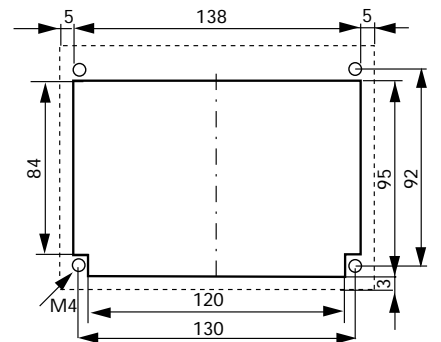


MCP-E Remote
with same front panel but without control panel

Front view (mm)



Mounting cut-out (mm)



Technical specifications

Mains connection	230 V / 50 Hz or 115 V / 60 Hz (please indicate on your order)
Power consumption	max. 110 W
Weight	2.3 kg

Interfaces

- RS232 in
for operation controlling via PC
- RS232 out
for cascading up to 8 control units
- Analog input (Speed control)
0–5 or 0–10 V, 0–20 or 4–20 mA
- Analog output (Speed output)
0–10 V_{DC} or 0–12 kHz
- Digital input
start/stop, rotation direction, autostart

Operating panel

- LED display
- Membrane key-pad (7 keys) for:
Run/Stop, Up and Down (value setting),
rotation direction, calibration, operating
mode (MODE key), MAX/MIN Reset
- Memory:
4 sets of operating parameters can be stored
- Selectable operating modes:
 - Pumping by speed (rpm)
 - Pumping by flow rate (ml/min)
 - Dispensing by volume (ml)
 - Dispensing by time (0.1s to 999h)
 - Intermittent dispensing
(repetitive dispensing by volume or time
with pre-set pause time)
 - Pause time setting (from 0.1s to 999h)
 - Number of dispensing cycles
 - Roller back-steps for drip-free dispensing
 - Selectable tube sizes
- Calibration functions:
 - Flow rate (ml/min)
 - Dispensing volume (ml)

Ordering information

Data sheet	Model	MCP-E	MCP-E Remote
	MCP-E	IS 2364	IS 2362
Included with delivery: data sheet for installation and electrical connections			

⚠ IMPORTANT

Active cooling system

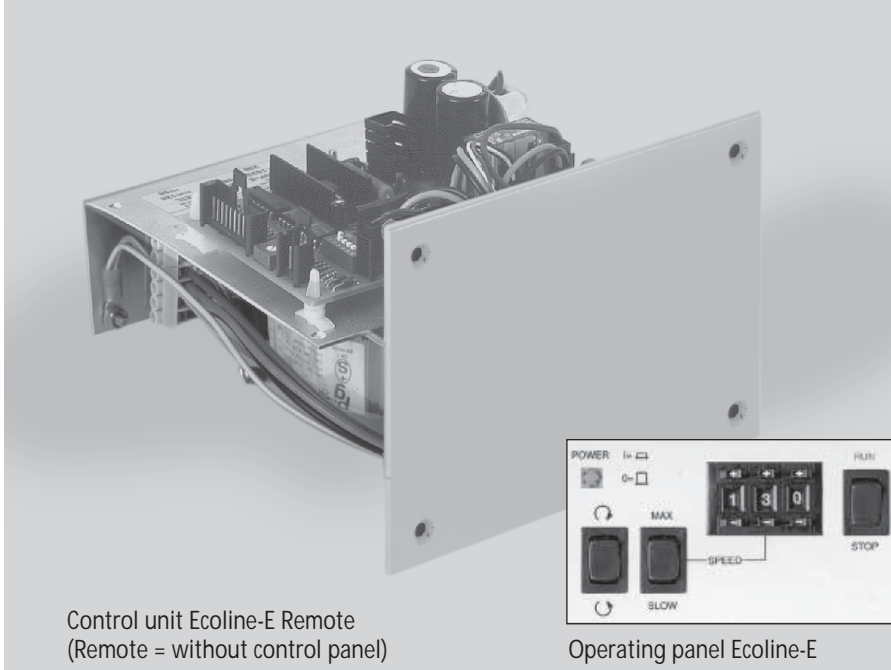
Adequate ventilation (active cooling) must be provided depending on the installation conditions and the operating time.

The buyer and user himself is responsible for sufficient ventilation of ISMATEC® panel-mounted pumps.

Control unit Ecoline-E / -Remote

for DC motor with encoder serie Ecoline-E

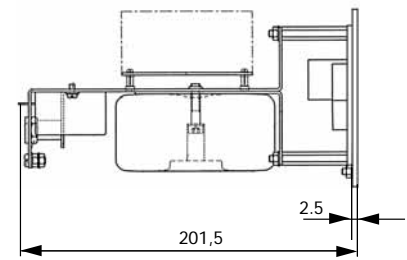
OEM



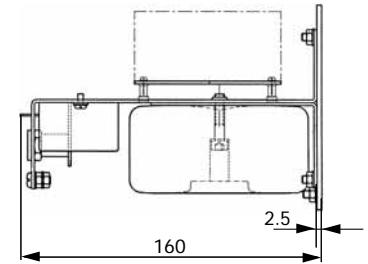
Control unit Ecoline-E Remote
(Remote = without control panel)

Operating panel Ecoline-E

Side view (mm)

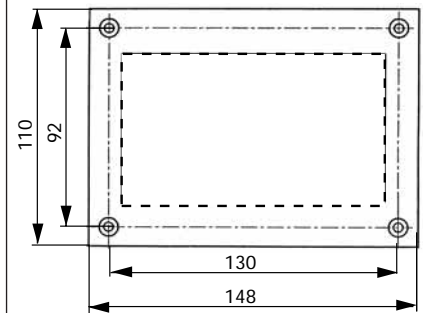


Ecoline-E

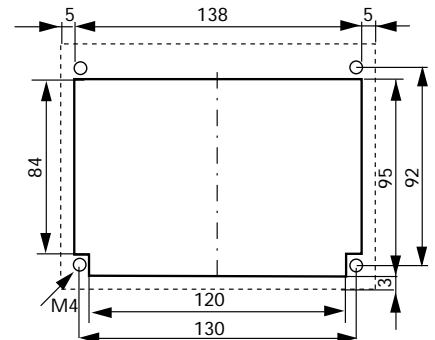


Ecoline-E Remote
with same front panel but without control panel

Front view (mm)



Mounting cut-out (mm)



IMPORTANT

Active cooling system

Adequate ventilation (active cooling) must be provided depending on the installation conditions and the operating time.

The buyer and user himself is responsible for sufficient ventilation of ISMATEC® panel-mounted pumps.

Technical specifications

Mains connection	230 V / 50/60 Hz or 115 V / 50/60 Hz (please indicate on your order)
Power consumption	max. 110 W
Weight	2.3 kg

Interfaces

■ Analog input	
Speed control	0-5 V or 0-10 V, 0-20 mA or 4-20 mA
■ Analog output	
Speed output	0-10 V _{DC} or 0-12 kHz
■ Digital input (TTL-level)	
Start/Stop, rotation direction	

Operating panel

- Run/Stop switch
- Switch for rotation direction
- Switch for MAX/SLOW
- 3-digit potentiometer for digital speed setting in 0.1%-steps

Ordering information

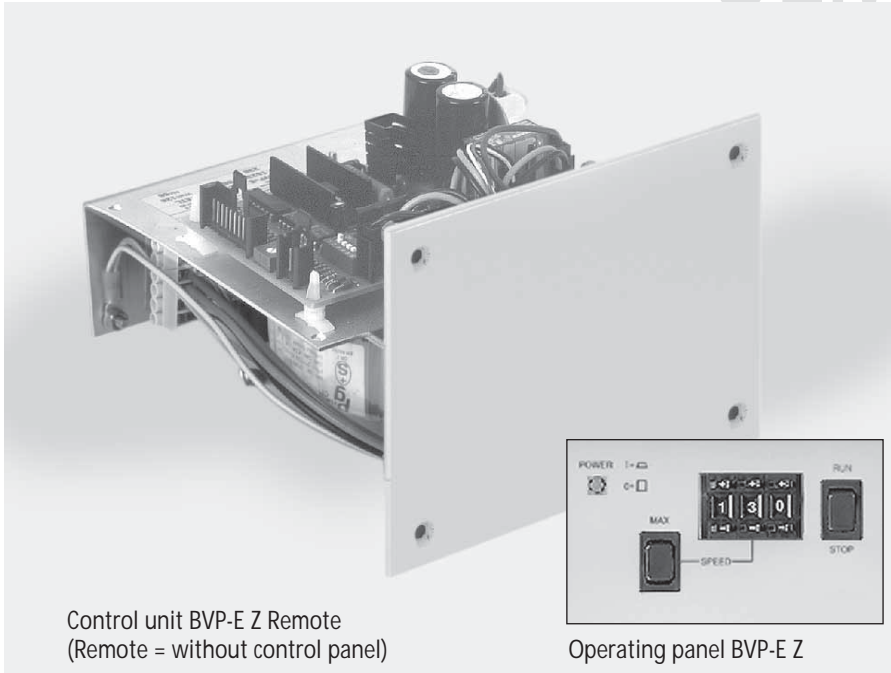
Data sheet	Model	Ecoline-E	Ecoline-E Remote
	Ecoline-E	IS 10354	IS 10353
Included with delivery: data sheet for installation and electrical connections			

08.4
30.09.05

Control unit BVP-E Z / -Remote

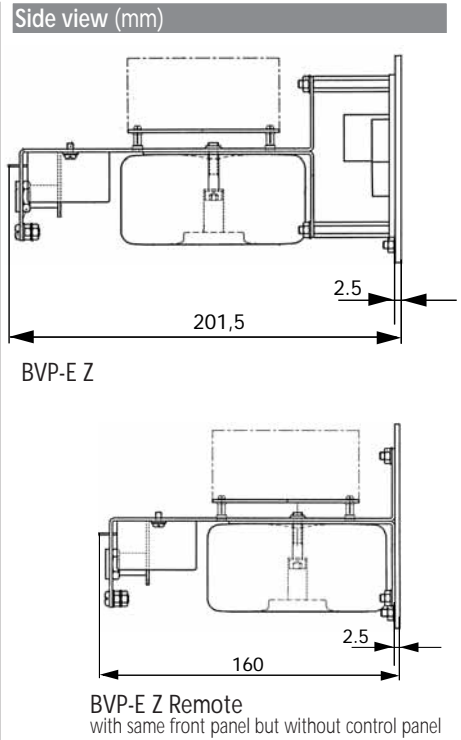
for DC motor with encoder

OEM

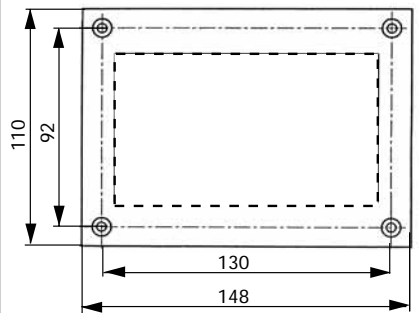


Control unit BVP-E Z Remote
(Remote = without control panel)

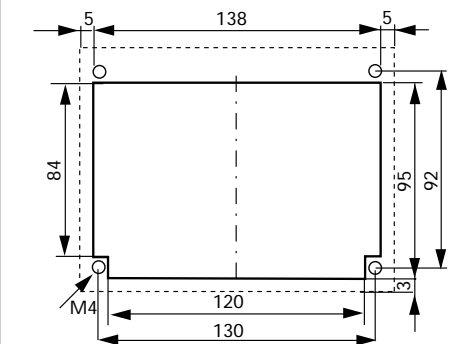
Operating panel BVP-E Z



Front view (mm)



Mounting cut-out (mm)



Technical specifications	
Mains connection	230 V / 50/60 Hz or 115 V / 50/60 Hz (please indicate on your order)
Power consumption	max. 150 W
Weight	2.3 kg

Interfaces	
■ Analog input	
Speed control	0-5 V or 0-10 V, 0-20 mA or 4-20 mA
■ Analog output	
Speed output	0-10 V _{dc} or 0-12 kHz
■ Digital input (TTL-level)	
Start/Stop	

Operating panel	
■ Start/Stop switch	
■ Switch for MAX/SLOW	
■ 3-digit potentiometer for digital speed setting in 0.1%-steps	

Ordering information

Model	BVP-E Z	BVP-E Z Remote
	IS 2367	on request
Included with delivery: data sheet for installation and electrical connections		

⚠ IMPORTANT

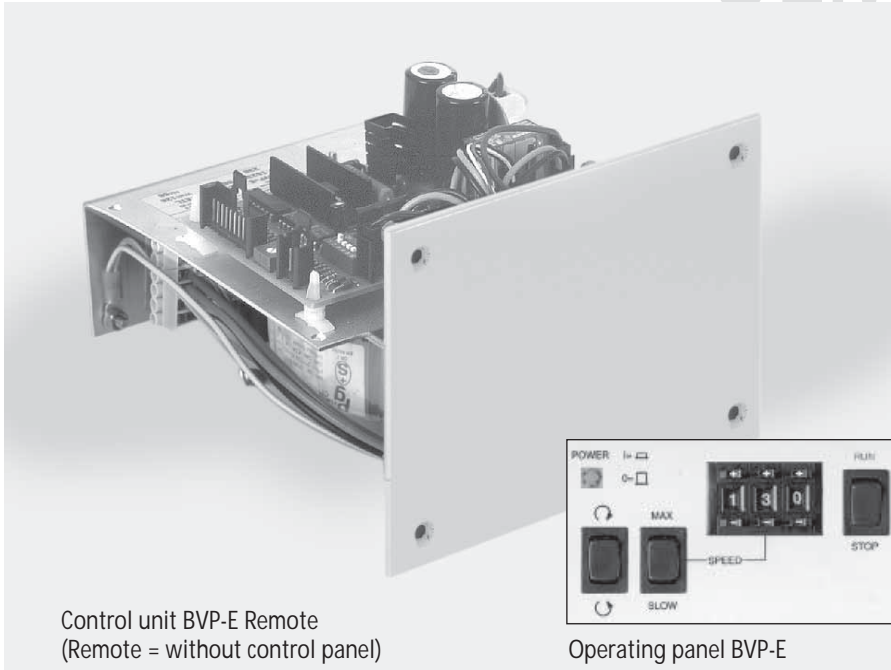
Active cooling system
Adequate ventilation (active cooling) must be provided depending on the installation conditions and the operating time.
The buyer and user himself is responsible for sufficient ventilation of ISMATEC® panel-mounted pumps.

Data sheet
08.11
30.09.05

Control unit BVP-E / -Remote

for DC motor with encoder

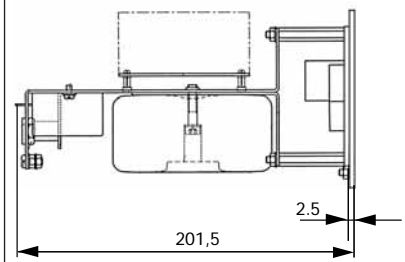
OEM



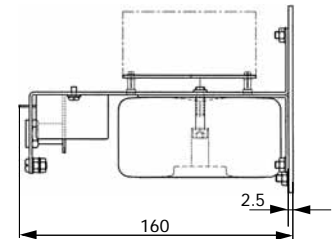
Control unit BVP-E Remote
(Remote = without control panel)

Operating panel BVP-E

Side view (mm)

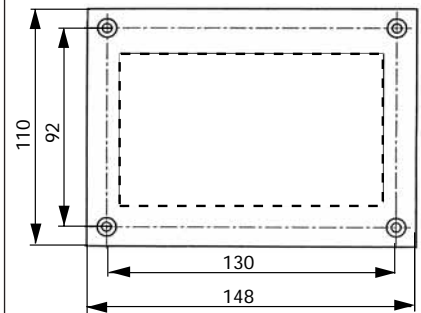


BVP-E

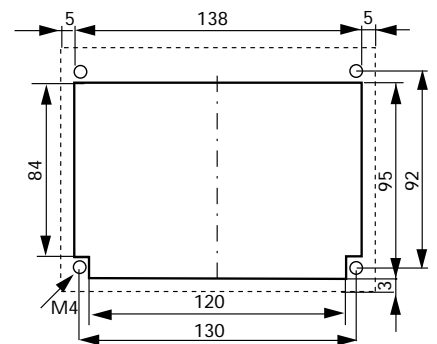


BVP-E Remote
with same front panel but without control panel

Front view (mm)



Mounting cut-out (mm)



IMPORTANT

Active cooling system
Adequate ventilation (active cooling) must be provided depending on the installation conditions and the operating time.
The buyer and user himself is responsible for sufficient ventilation of ISMATEC® panel-mounted pumps.

Technical specifications

Mains connection	230 V / 50/60 Hz or 115 V / 50/60 Hz (please indicate on your order)
Power consumption	max. 110 W
Weight	2.3 kg

Interfaces

■ Analog input	
Speed control	0-5 V or 0-10 V, 0-20 mA or 4-20 mA
■ Analog output	
Speed output	0-10 V _{dc} or 0-12 kHz
■ Digital input (TTL-level)	
Start/Stop, rotation direction	

Operating panel

- Run/Stop switch
- Switch for rotation direction
- Switch for MAX/SLOW
- 3-digit potentiometer for digital speed setting in 0.1%-steps

Ordering information

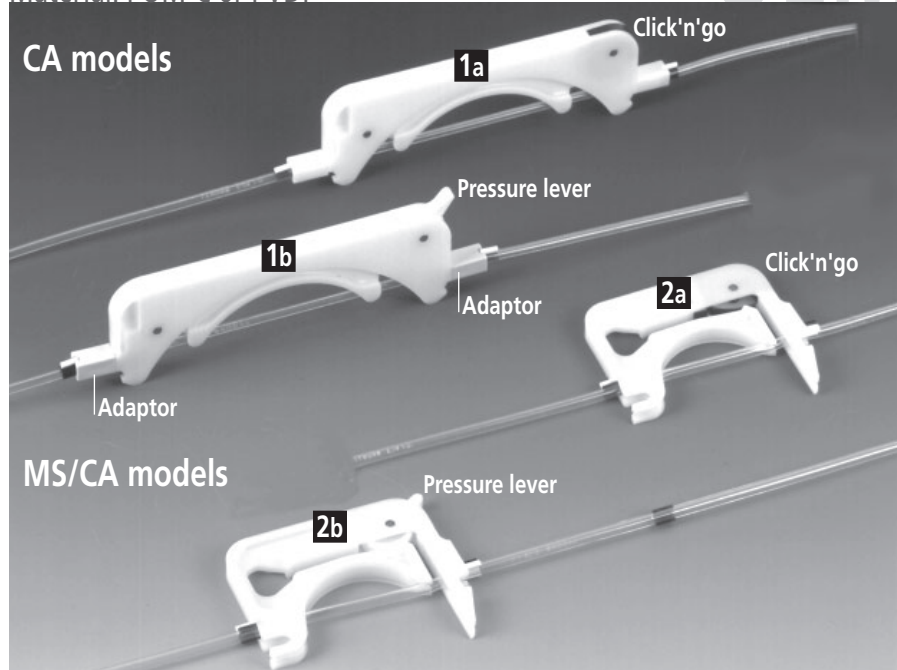
Data sheet	Model	BVP-E	BVP-E Remote
	BVP-E	IS 2366A	IS 2691A
Included with delivery: data sheet for installation and electrical connections			

08.3
30.09.05

Tubing Cassettes Click'n'go and Pressure Lever

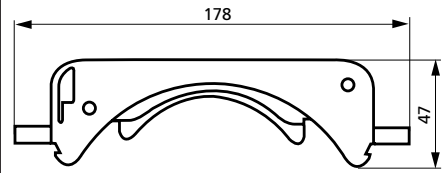
Material: POM-C or PVDF

OEM



CA Click'n'go

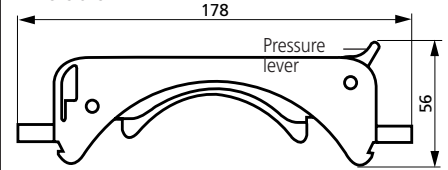
Dimensions in mm



Tubing with 2 colour-coded collars

CA Pressure Lever

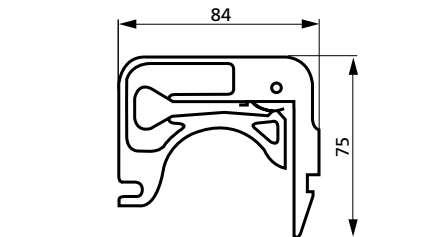
Dimensions in mm



Tubing with 2 colour-coded collars

MS/CA Click'n'go

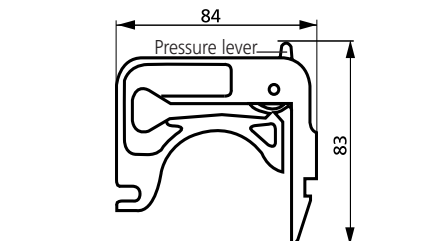
Dimensions in mm



Tubing with 3 colour-coded collars

MS/CA Pressure Lever

Dimensions in mm



Tubing with 3 colour-coded collars

Cassette Types

a	Click'n'go
	Spring-loaded cassette providing defined and reproducible occlusion conditions. Independent of tubing diameter and material, the occlusion is automatically correct. Suitable for differential pressure up to max. 1.0 bar. ⚠ For tubing Tygon MH 2075 we recommend to use cassettes with pressure lever.
b	Pressure lever
	Cassette with pressure lever for adjustable occlusion (may be an advantage for elevated differential pressure conditions) Suitable for elevated differential pressure and tubing Tygon MH 2075.

Material

POM-C (Polyoxymethylene-Copolymer) (Polyacetal, Polyformaldehyde)
Good chemical resistance to many organic solvents and strong alkaline chemicals. Is affected by strong acids and oxidizing substances. UV-stabilized and stable at (dry) temperatures up to 80°C (in continuous use) or 136°C (for a short time).
PVDF (Polyvinylidene fluoride)
Very good chemical resistance to acids and most aliphatic, aromatic and chlorinated solvents. Not suitable for long contact with esters, ketones, amines and strong alkaline chemicals. Stable to UV and temperatures up to 110°C (in continuous use) or 142°C (for a short time).

Ordering information

Figure	Cassette	Type	Material	Order No.	Availability
1a	CA	Click'n'go	POM-C	IS 3710*	available
1b	CA	Pressure Lever	POM-C	IS 0122*	available
2a	MS/CA	Click'n'go	POM-C	IS 3510	available
2b	MS/CA	Pressure Lever	POM-C	IS 0649	available
1b	CA	Pressure Lever	PVDF	IS 3820*	available
2b	MS/CA	Pressure Lever	PVDF	IS 3629	available

*CA cassettes require 2 adaptors.

Please note
CA cassettes require 2 adaptors.
*Adaptor (1 pce. POM-C) Order No. IS 0123
*Adaptor (1 pce. PVDF) Order No. IS 3861
Order 2 adaptors per CA cassette

Data sheet
09.1
30.09.05