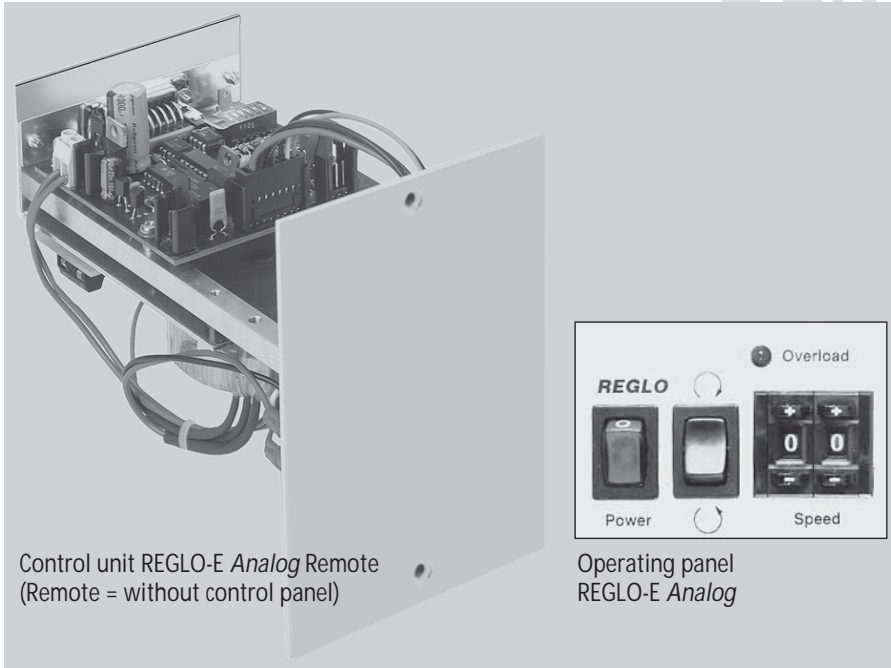
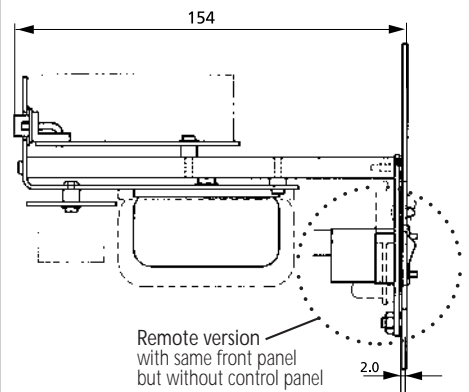


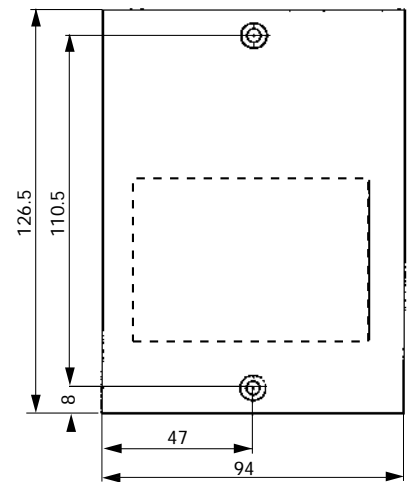
Control unit REGLO-E Analog /-Remote for DC motor with encoder



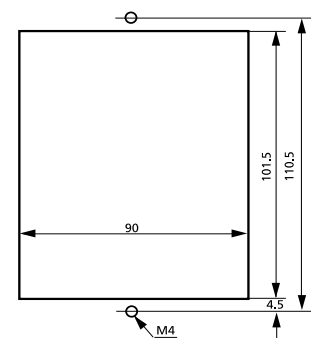
Side view (mm)



Front view (mm)



Mounting cut-out (mm)



Technical specifications

Mains connection	230 V / 50/60 Hz or 115 V / 50/60 Hz (please indicate on your order)
Power consumption	max. 20 W
Weight	0.700 kg

Interfaces

■ Analog input	
Speed control	0-5 V or 0-10 V, 0-20 mA or 4-20 mA
■ Analog output	
Speed output	0-8 kHz (1-2 channels) 0-5 kHz (3-5 channels)
■ Digital input (TTL-level)	
Start/Stop, rotation direction	

Operating panel

- On/Off switch
- Switch for rotation direction
- LED indicator for overload
- 2-digit potentiometer for digital speed setting in 1%-steps, 1-99 %

Ordering information

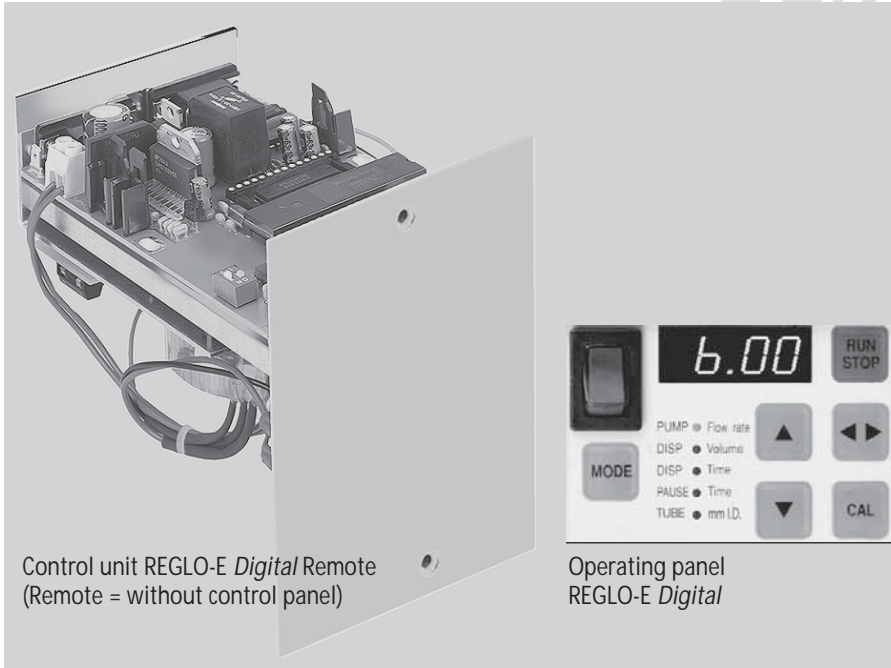
Model	REGLO-E Analog	REGLO-E Analog Remote
1-2 channels	IS 3186	IS 3269
3-5 channels	IS 3385	IS 3972

Please note

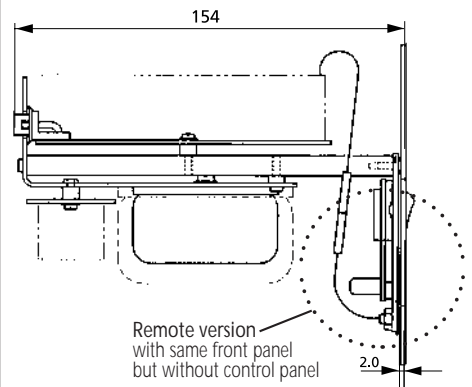
Included with delivery: data sheet for installation and electrical connections

Data sheet
08.1
30.09.05

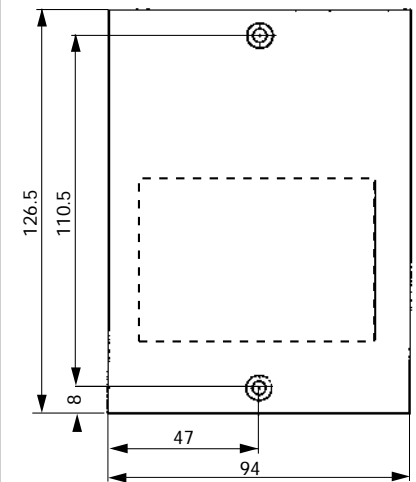
Control unit REGLO-E *Digital I-Remote* for DC motor with encoder



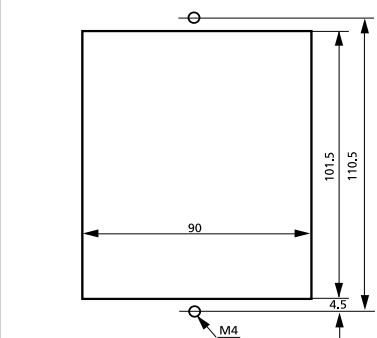
Side view (mm)



Front view (mm)



Mounting cut-out (mm)



Control unit REGLO-E *Digital Remote*
(Remote = without control panel)

Operating panel
REGLO-E *Digital*

Technical specifications

Mains connection	230 V / 50/60 Hz or 115 V / 50/60 Hz (please indicate on your order)
Power consumption	max. 20 W
Weight	0.700 kg

Interfaces

- RS232 in
for controlling via PC
- RS232 out
for cascading up to 8 control units
- Digital input (TTL-level)
Start/Stop, Autostart
- Analog output
 - Speed output 0-8 kHz (1-2 channels) ¹⁾
0-5 kHz (3-5 channels)

¹⁾ Only for Remote Version: When ordering please state the number of channels required.

Operating panel

- On/Off switch
- LED display
- Membrane key-pad (6 keys) for:
Run/Stop, Up and Down (value setting),
rotation direction, calibration, operating
mode (MODE key)
- Selectable operating modes:
 - Pumping by speed (rpm)
 - Pumping by flow rate (ml/min)
 - Dispensing by volume (ml)
 - Intermittent dispensing
(repetitive dispensing by volume with
pre-set pause time)
 - Pause time setting (from 0.1s to 999h)
 - Roller back-steps for drip-free dispensing
 - selectable tube sizes
- Calibration functions:
 - Flow rate (ml/min)
 - Dispensing volume (ml)

Ordering information

Model	REGLO-E <i>Digital</i>	REGLO-E <i>Digital Remote</i>
1-5 channels	IS 3187	IS 3257

Please note

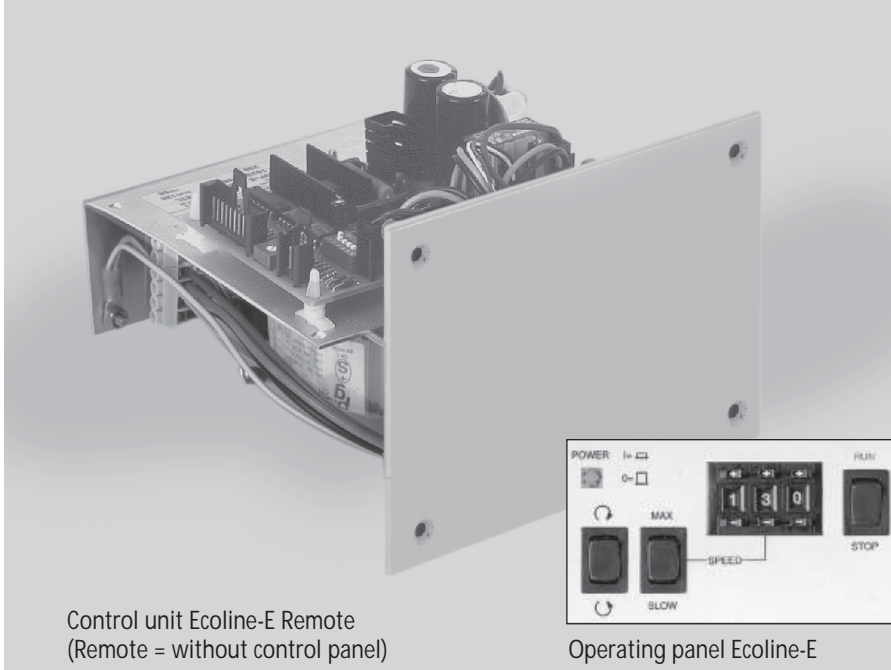
Included with delivery:
data sheet for installation and electrical
connections

Data sheet
08.2
30.09.05

Control unit Ecoline-E / -Remote

for DC motor with encoder serie Ecoline-E

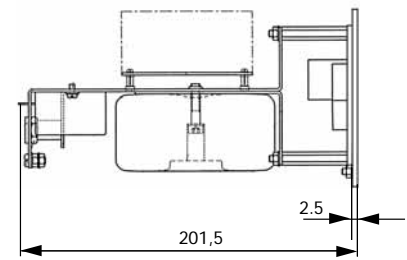
OEM



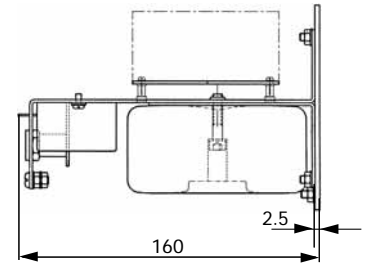
Control unit Ecoline-E Remote
(Remote = without control panel)

Operating panel Ecoline-E

Side view (mm)

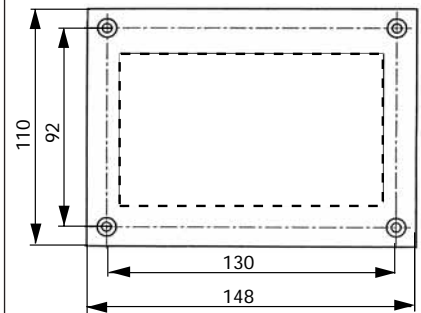


Ecoline-E

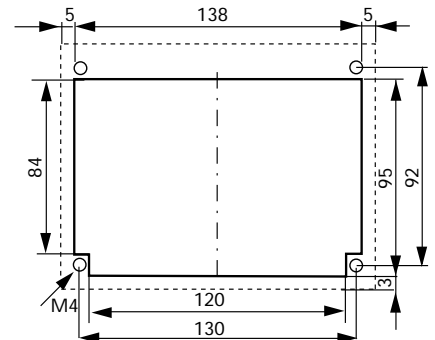


Ecoline-E Remote
with same front panel but without control panel

Front view (mm)



Mounting cut-out (mm)



Technical specifications

Mains connection	230 V / 50/60 Hz or 115 V / 50/60 Hz (please indicate on your order)
Power consumption	max. 110 W
Weight	2.3 kg

Interfaces

■ Analog input	
Speed control	0-5 V or 0-10 V, 0-20 mA or 4-20 mA
■ Analog output	
Speed output	0-10 V _{dc} or 0-12 kHz
■ Digital input (TTL-level)	
Start/Stop, rotation direction	

Operating panel

- Run/Stop switch
- Switch for rotation direction
- Switch for MAX/SLOW
- 3-digit potentiometer for digital speed setting in 0.1%-steps

Ordering information

Data sheet

08.4
30.09.05

Model	Ecoline-E	Ecoline-E Remote
Ecoline-E	IS 10354	IS 10353
Included with delivery: data sheet for installation and electrical connections		

IMPORTANT

Active cooling system

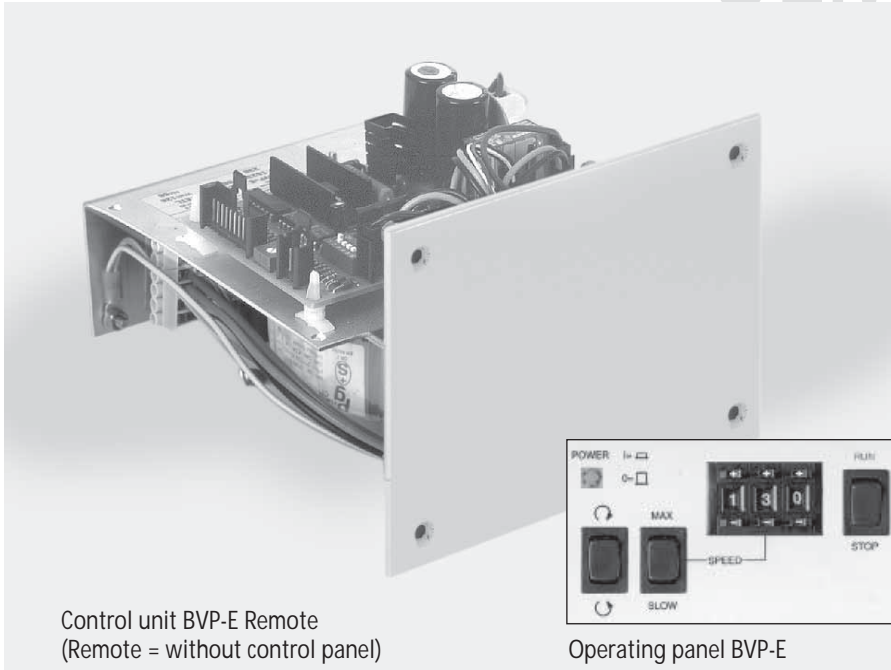
Adequate ventilation (active cooling) must be provided depending on the installation conditions and the operating time.

The buyer and user himself is responsible for sufficient ventilation of ISMATEC® panel-mounted pumps.

Control unit BVP-E / -Remote

for DC motor with encoder

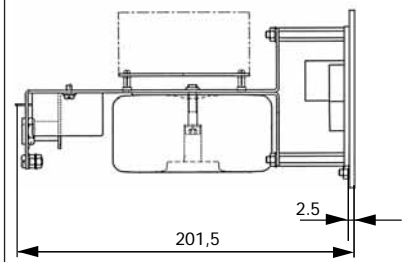
OEM



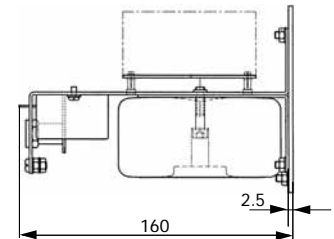
Control unit BVP-E Remote
(Remote = without control panel)

Operating panel BVP-E

Side view (mm)

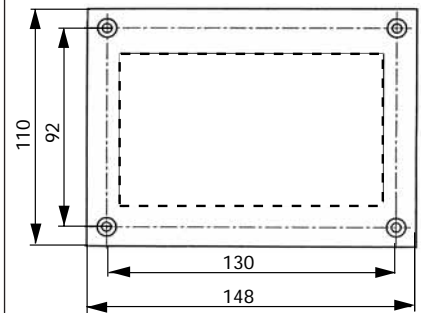


BVP-E

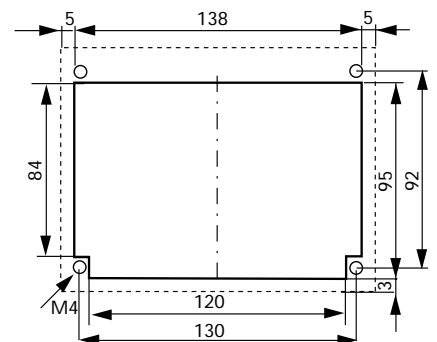


BVP-E Remote
with same front panel but without control panel

Front view (mm)



Mounting cut-out (mm)



IMPORTANT

Active cooling system
Adequate ventilation (active cooling) must be provided depending on the installation conditions and the operating time.
The buyer and user himself is responsible for sufficient ventilation of ISMATEC® panel-mounted pumps.

Technical specifications

Mains connection	230 V / 50/60 Hz or 115 V / 50/60 Hz (please indicate on your order)
Power consumption	max. 110 W
Weight	2.3 kg

Interfaces

■ Analog input	
Speed control	0-5 V or 0-10 V, 0-20 mA or 4-20 mA
■ Analog output	
Speed output	0-10 V _{dc} or 0-12 kHz
■ Digital input (TTL-level)	
Start/Stop, rotation direction	

Operating panel

- Run/Stop switch
- Switch for rotation direction
- Switch for MAX/SLOW
- 3-digit potentiometer for digital speed setting in 0.1%-steps

Ordering information

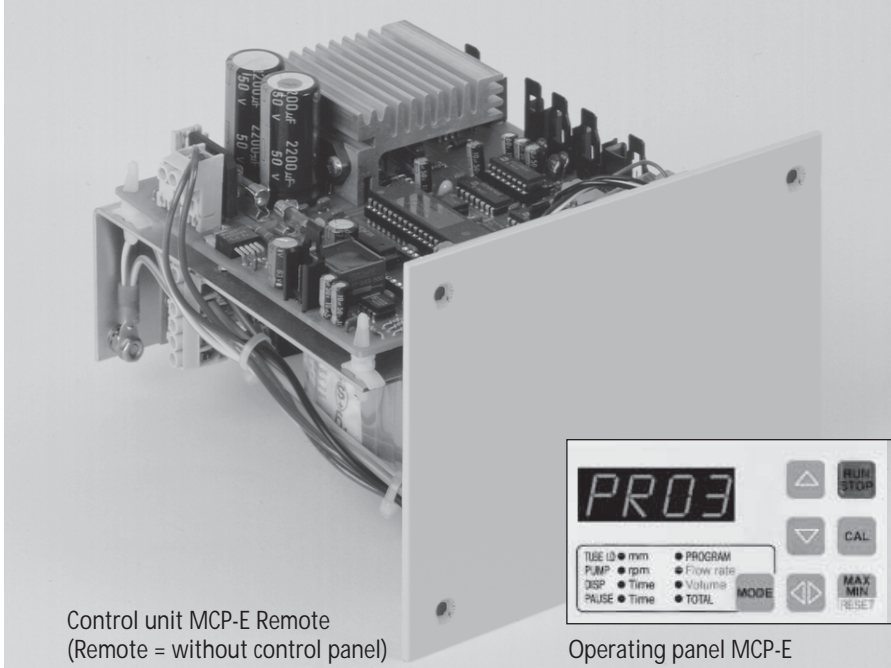
Data sheet	Model	BVP-E	BVP-E Remote
	BVP-E	IS 2366A	IS 2691A
Included with delivery: data sheet for installation and electrical connections			

08.3
30.09.05

Control unit MCP-E / -Remote

for DC motor with encoder Ecoline-E

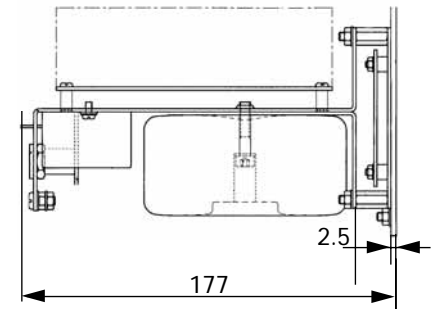
OEM



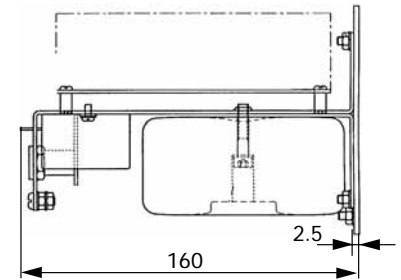
Control unit MCP-E Remote
(Remote = without control panel)

Operating panel MCP-E

Side view (mm)

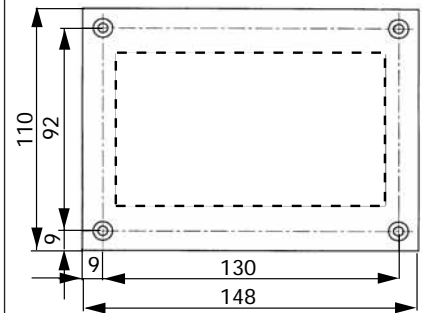


MCP-E

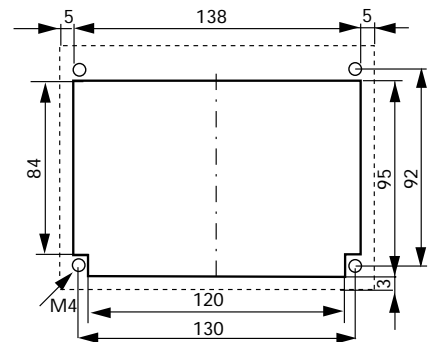


MCP-E Remote
with same front panel but without control panel

Front view (mm)



Mounting cut-out (mm)



Technical specifications

Mains connection	230 V / 50 Hz or 115 V / 60 Hz (please indicate on your order)
Power consumption	max. 110 W
Weight	2.3 kg

Interfaces

- RS232 in
for operation controlling via PC
- RS232 out
for cascading up to 8 control units
- Analog input (Speed control)
0–5 or 0–10 V, 0–20 or 4–20 mA
- Analog output (Speed output)
0–10 V_{DC} or 0–12 kHz
- Digital input
start/stop, rotation direction, autostart

Operating panel

- LED display
- Membrane key-pad (7 keys) for:
Run/Stop, Up and Down (value setting),
rotation direction, calibration, operating
mode (MODE key), MAX/MIN Reset
- Memory:
4 sets of operating parameters can be stored
- Selectable operating modes:
 - Pumping by speed (rpm)
 - Pumping by flow rate (ml/min)
 - Dispensing by volume (ml)
 - Dispensing by time (0.1s to 999h)
 - Intermittent dispensing
(repetitive dispensing by volume or time
with pre-set pause time)
 - Pause time setting (from 0.1s to 999h)
 - Number of dispensing cycles
 - Roller back-steps for drip-free dispensing
 - Selectable tube sizes
- Calibration functions:
 - Flow rate (ml/min)
 - Dispensing volume (ml)

Ordering information

Data sheet	Model	MCP-E	MCP-E Remote
	MCP-E	IS 2364	IS 2362
08.5	Included with delivery: data sheet for installation and electrical connections		
30.09.05			

⚠ IMPORTANT

Active cooling system

Adequate ventilation (active cooling) must be provided depending on the installation conditions and the operating time.

The buyer and user himself is responsible for sufficient ventilation of ISMATEC® panel-mounted pumps.