

Ordering Information

1. SphereFlash® Colony Counter unit
(includes Colonies LITE software)

CAT. 90007000

2. Colony PRO software

CAT. 90007001

3. Halos PRO software

CAT. 90007002



Technical data

Petri dish maximum usable diameter: 90mm

Computer interface: USB 3.0 Type-A socket

Mains AC adaptor Output: 12V DC 3.43A

Power Range: 90~264 VAC

Frequency Range_ 47~63Hz

Maximum Power:40W

Overvoltage Category: II

Air temperature 15-30°C (59-86°F)

Relative humidity: 10-75% (non-condensing)

Altitude: Up to 2000m (6500ft)

Place of operation: For indoor use only.

Frequency Range: 50-60Hz

Pollution level 2

Dimensions: 288x220x371 mm (1.34x8.66x14.6 in)

Weight: 5,5Kg (12.13 lb)

Computer Requirements:

- Microsoft Windows® 7, 8.1,10 (x64 platforms).
- 1 free USB 3.0 Port.
- 8 Gigabytes of RAM memory.
- 100 Megabytes of free disk space and 100 Gigabytes for the Database (for 5000 results stored with images).
- FullHD screen (1920x1080px) recommended.
- 24" screen size recommended.
- Microsoft Excel® 2007 or higher, 64 bits to open exported Excel® files.
- A virtual PDF printer to create PDF reports.

Automatic Colony Counter & Inhibition Halos measurement

World-class software, uniform & reflection-free illumination



Doc. No. 50007950-01

CAT. 90007000
SphereFlash with Colony LITEsoftware

Specifications subject to change without notice.

For more information visit us at:
www.iul-inst.com

IUL, S.A. Ciutat d'Asunción, 4 - 08030 Barcelona (Spain)
iul@iul-inst.com • T. +34 93 274 02 32 • F. +34 93 274 01 44

iUL
www.iul-inst.com

Product Overview

The SphereFlash® is an Automatic Colony Counter that meets all the requirements that may be required in a modern microbiology laboratory.

With its Colony Lite software version it performs the colony counting in a simple and reliable way thanks to its world-class software and its patented built-in lighting system.

For more demanding users the software can be upgraded to Colonies PRO to increase its capabilities, e.g. setting User's Permission Levels, **LIMS connectivity**, Worksheets, Barcode Reading, Reporting, Audit Trail, or **CFR21 Part 11**.

With the optional Halos PRO app, the Sphere Flash unit can be transformed to measure inhibition halos accepting various circle approximation criteria to obtain the corresponding diameters of virtual circle areas.

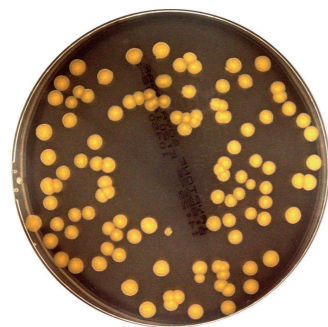
In all versions the lighting is done through LEDs that are oriented to the internal wall of a moving spheric chamber. The result is an unprecedented uniform and reflections-free illumination in a colony counter device.

The **moving sphere automatically closes the chamber** and prevents the area in which the Petri dish is located from any external light. It avoids any reflection or interference of external light, creating a luminous atmosphere without reflections of the walls of the Petri dish or of the colonies. For the transparent media the light by transmission is also available in all versions.

Main Benefits

World-Class Software: Easy & intuitive yet a powerful software. Even in its LITE version it will detect a wide range of colony types with minor or none user parametrization.

Reflections-Free Illumination: Its patentend spheric chamber eliminates reflections in both, colonies and Petri plate, and provides a unifrom illumination for an improved image capture that will lead to better, more reliable, and consistent results.



Reflections-Free Image

Image captured from a SphereFlash®

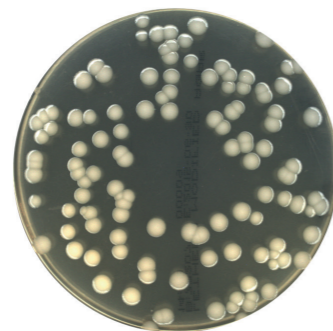


Image captured from a traditional counter

Audit Trail: Security-relevant chronological set of records that will provide documentary evidence of the sequence of activities that have affected at any time a specific operation or event in the SphereFlash®.

ColonyClass	Mark Color	Count	Counted Volume(mL)	Result CFU/mL
white	+	26	0.842	3.09E+02
yellow	+	3	0.842	3.56E+01
brown	+	2	0.842	2.38E+01

Report generation: Easy and automatic generation of result reports with customizable layout to include your Company's logo and/or information.

Scalability: Starting Colonies LITE software version (included with the unit) it can be independently upgraded to Colonies PRO or Halos PRO.

Software Comparison Table

Feature	Colonies LITE Cat.No. 90007003	Colonies PRO Cat. No. 90007001	Halos PRO Cat. No. 90007002
Colony Counting	✓	✓	✓
Inhibition Zones Measurement	✓	✓	✓
Standard Methods	✓	✓	✓
Methods Edition	✓	✓	✓
Automatic Calibration & Verification	✓	✓	✓
Users Management	✓	✓	✓
Results Table Cusotomization	✓	✓	✓
Worksheet Mode	✓	✓	✓
Remote Input-Output Mode (LIMs)	✓	✓	✓
Audit Trail	✓	✓	✓
Report Generation	✓	✓	✓

High-Troughput: A fast and powerful image precessing software together with an automatic closing of the spheric chamber allows minor user intervention and time optimisation. Large amounts of plates can be accurately counted.