

Medium Pressure Selection Valves

Medium Pressure 6-Way Selection Valves

- ▶ Biocompatible and inert
- ▶ Low swept volume
- ▶ Excellent choice for mobile phase selection

The Upchurch Scientific® 6-Way Medium Pressure Selection Valves have a common inlet (or outlet) port connected to six different ports.

Two biocompatible selection valve options are available. For more information on the Long-Life Ceramic and Economical Polymer valves, please see the previous page.

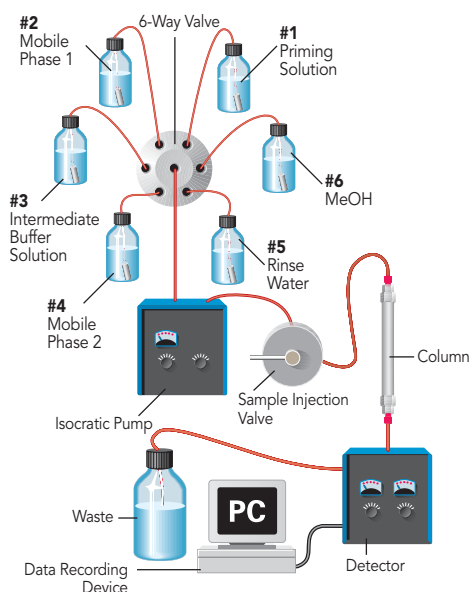
If your application does not require all six outer ports, seal the extra port(s) with any flat-bottom 1/4-28 plug from page 32.

Both valve options are available in three configurations: standard manual, bulkhead mountable manual and actuated. A valve mounting bracket (M-615-2) is listed on page 144. Valves can be premounted on a DC gear motor actuator to automate valve positioning. Each actuated valve is provided with an inline power adapter which allows operation from 110/120V and 220/240V AC power, a RS-232 and contact closure communication cable and a cable for multiplexing valves in series.



Application Note

Use our 6-Way Medium Pressure Selection Valve to easily select different solvents with an isocratic pump. The setup below involves an isocratic pump used for two separate assays, each requiring a pre-rinsing step prior to use. Using our Selection Valve in this setup, the system can be primed with the solvent in the first reservoir. Then, solvent from the second reservoir can be used as the mobile phase for the first application. Later, the system can be rinsed with an intermediate buffer solution from the third reservoir, followed by switching over to the second mobile phase in reservoir number 4. At the end of the day, the system can be rinsed with water from a fifth reservoir to avoid the possibility of precipitation on wetted surfaces. Follow this rinse with a final rinse of methanol from the sixth reservoir for system storage.



Specifications

Valve Part No.	Thru-Hole	Dimensions (L x W), excluding fittings	Port to Port Volume
M-470	0.040" (1.0 mm)	2.75" x 1.30" (69.8 x 33.0 mm)	16.1 µL
M-471	0.040" (1.0 mm)	3.00" x 1.30" (76.2 x 33.0 mm)	16.1 µL
V-240	0.040" (1.0 mm)	2.72" x 1.24" ¹ (69.1 x 31.5 mm)	16.1 µL
V-241	0.040" (1.0 mm)	2.72" x 1.24" ¹ (69.1 x 31.5 mm)	16.1 µL
V-340	0.063" (1.6 mm)	2.92" x 1.24" ¹ (74.2 x 31.5 mm)	18.1 µL
V-341	0.063" (1.6 mm)	2.92" x 1.24" ¹ (74.2 x 31.5 mm)	18.1 µL

¹ Width of the knob, which is slightly wider than the valve body



Top Seller SEE STARRED PRODUCTS

Part No.	Description	Wetted Material	Tubing OD	Includes
MEDIUM PRESSURE 6-WAY SELECTION VALVES, MANUAL				
M-470	6-Way Selection Valve	Ceramic	1/16"	(6) XP-235
★ M-471	Bulkhead version of M-470	Ceramic	1/16"	(6) XP-235
V-104	5/64" Allen Wrench (replacement)			
V-240	6-Way Selection Valve	Polymer	1/16"	(6) XP-235
★ V-241	Bulkhead version of V-240	Polymer	1/16"	(6) XP-235
V-340	6-Way Selection Valve	Polymer	1/8"	(6) XP-335
★ V-341	Bulkhead version of V-340	Polymer	1/8"	(6) XP-335
MEDIUM PRESSURE 6-WAY SELECTION VALVES, ACTUATED				
★ V-1241-DC	Actuated version of V-241, DC Gear (premounted)			
★ V-1341-DC	Actuated version of V-341, DC Gear (premounted)			
★ V-1471-DC	Actuated version of V-471, DC Gear (premounted)			