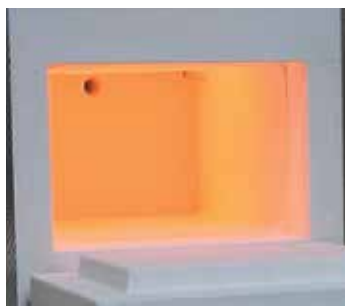


## Muffle Furnaces with Embedded Heating Elements in the Ceramic Muffle



L 9/11/SKM



Muffle heated from four sides



Gas supply system for non-flammable protective or reactive gas with shutoff valve and flow meter with regulator valve, piped and ready to connect



Over-temperature limiter

### L, LT 9/11/SKM

We particularly recommend the L 9/11/SKM model if your application involves aggressive substances. The furnace has a ceramic muffle with embedded heating from four sides. The furnace thus combines a very good temperature uniformity with excellent protection of the heating elements from aggressive atmospheres. Another aspect is the smooth, nearly particle free muffle (furnace door made of fiber insulation), an important quality feature for some ashing processes.

- Tmax 1100 °C
- Muffle heated from four sides
- Furnace chamber with embedded ceramic muffle, high resistance to aggressive gasses and vapours
- Housing made of sheets of textured stainless steel
- Optional flap door (L) which can be used as work platform or lift door (LT) with hot surface facing away from the operator
- Adjustable working air inlet in the door
- Exhaust air outlet in rear wall of furnace
- Solid state relays provide for lownoise operation
- Controls description see page 60

### Additional equipment

- Chimney, chimney with fan or catalytic converter
- Over-temperature limiter with adjustable cutout temperature for thermal protection class 2 in accordance with EN 60519-2 as temperature limiter to protect the furnace and load
- Protective gas connection to purge with non-flammable protective or reaction gases
- Manual or automation gas supply system
- Please see page 12 for more accessories

Model	Tmax °C	Inner dimensions in mm			Volume in l	Outer dimensions in mm			Connected load kW	Electrical connection*	Weight in kg	Minutes to Tmax <sup>2</sup>
		w	d	h		W	D	H				
L 9/11/SKM	1100	230	240	170	9	480	550	570	3.0	1-phase	50	90
LT 9/11/SKM	1100	230	240	170	9	480	550	570+290 <sup>1</sup>	3.0	1-phase	50	90

<sup>1</sup>Including opened lift door

<sup>2</sup>If connected at 230 V 1/N/PE resp. 400 V 3/N/PE

\*Please see page 60 for more information about supply voltage