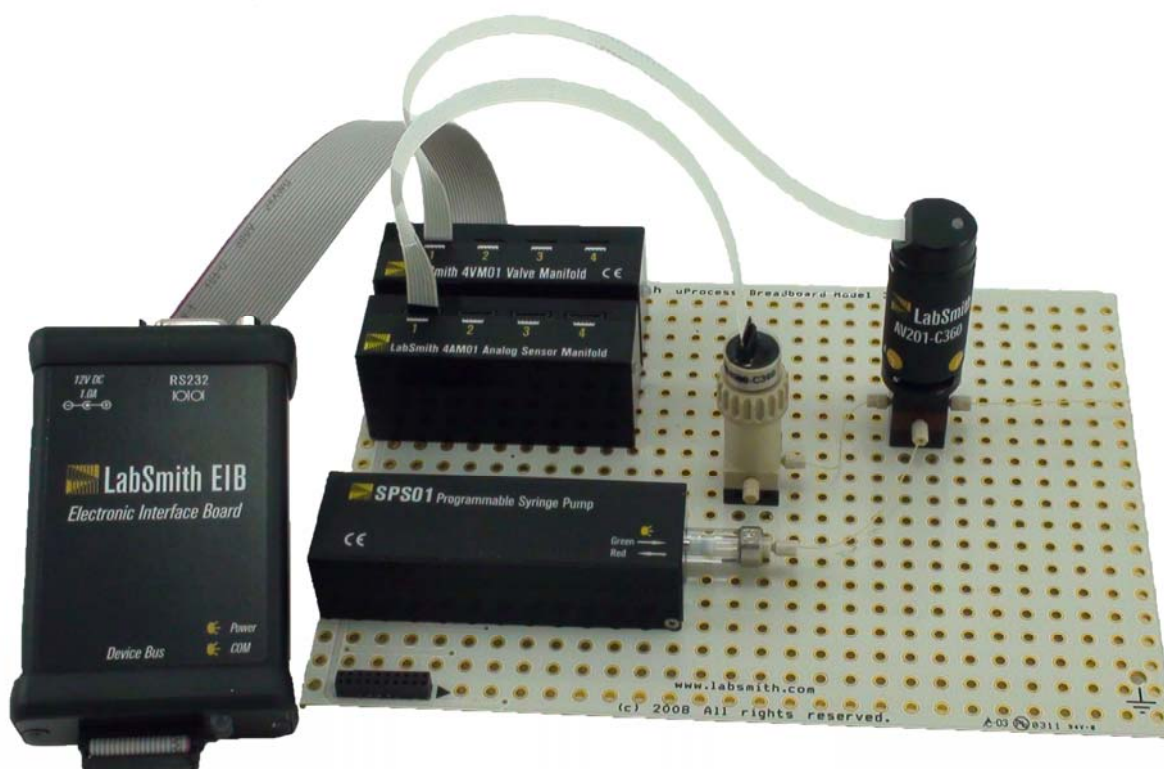




## LabSmith uProcess™ System User Guide

For Operation and Control of the following  
LabSmith uProcess devices using uProcess™ Software:

**SPS01 Programmable Syringe Pumps**  
**AV201 Automated Valves**  
**AV202 Automated Valves**  
**uPS Pressure Sensors**



This manual © 2013 LabSmith, Inc. uProcess software © 2013 LabSmith, Inc.

No part of this document may be reproduced or distributed without the consent of LabSmith.

LabSmith, CapTite, uProcess and uDevice are trademarks of LabSmith, Inc.

## Table of Contents

<b>CHAPTER 1. INTRODUCTION</b>	<b>5</b>
<b>Equipment List</b>	<b>5</b>
Required Equipment	6
Optional Equipment	6
<b>Cautions and Warnings</b>	<b>7</b>
<b>Getting Help</b>	<b>7</b>
<b>About This Manual</b>	<b>7</b>
<b>CHAPTER 2. GETTING STARTED</b>	<b>8</b>
<b>Connecting an Electronic Interface Board</b>	<b>8</b>
<b>Adding a Breadboard</b>	<b>8</b>
<b>Installing Automated Valves</b>	<b>9</b>
<b>Installing Syringe Pumps</b>	<b>9</b>
<b>Installing Pressure Sensors</b>	<b>9</b>
<b>Installing uProcess Software</b>	<b>10</b>
<b>CHAPTER 3. uPROCESS SOFTWARE</b>	<b>11</b>
<b>Software Interface</b>	<b>11</b>
uDevices Window	11
Sequencer Window	12
Output Window	12
Main Window	13
<b>Communicating with the uDevices</b>	<b>13</b>
<b>Online and Offline</b>	<b>16</b>
<b>Device Naming and Numbering</b>	<b>17</b>
Device Address	17
Device Name	17
Adding or Removing uDevices	18
<b>Saving Data into a Log File</b>	<b>18</b>
<b>External Instruments</b>	<b>19</b>
<b>CHAPTER 4. REAL TIME DEVICE CONTROL</b>	<b>20</b>
<b>uDevice Controls</b>	<b>21</b>
Analog Manifold Control	21
Syringe Pump Control	26
Valve Manifold Control	28
<b>CHAPTER 5. AUTOMATED CONTROL</b>	<b>31</b>
<b>Opening Script Files</b>	<b>31</b>
<b>Create a Script Using the Wizard</b>	<b>31</b>
<b>Save a Script File</b>	<b>32</b>
<b>Run, Pause and Quit a Script</b>	<b>32</b>
<b>Automated Script Functions</b>	<b>34</b>
General Formatting Rules	38
<b>Editing Automated Script Text</b>	<b>39</b>
Script Errors	40
Missing Devices	40

<b>Example Script</b>	<b>41</b>
<b>Syringe Pump Volume vs Delivery Time</b>	<b>46</b>
<b>Pressure Regulation Example Scripts</b>	<b>47</b>
<b>EXTERNAL INSTRUMENTS</b>	<b>52</b>
<b>APPENDIX A. MENUS, TOOLBARS, WINDOW CONTROLS</b>	<b>53</b>
<b>Menu Bar</b>	<b>53</b>
<b>Toolbar</b>	<b>53</b>
<b>Tooltips</b>	<b>54</b>
<b>Customizing the Dashboard</b>	<b>54</b>
Show/Hide Dashboard Elements	54
Auto-Minimize Windows	54
Detach, Dock and Re-Position Windows	54
<b>APPENDIX B. MAINTENANCE</b>	<b>56</b>
<b>Updating Firmware</b>	<b>56</b>
<b>Valve Actuation Profile Settings</b>	<b>56</b>
<b>Changing the Syringe Pump Glass Assembly</b>	<b>57</b>
<b>Calibrating the Syringe Pump</b>	<b>58</b>
<b>Care of the Syringe Glass and Plunger</b>	<b>59</b>
Plunger Care	59
Cleaning, Sterilizing, Autoclaving, and Disinfecting	59
<b>Capillary and Tubing Installation Guide</b>	<b>60</b>

## CHAPTER 1. INTRODUCTION

LabSmith's uProcess™ is a platform comprised of a suite of hardware and software products that simplify construction and control of microfluidic systems.

uProcess automated devices work together with CapTite™ microfluidic interconnect products to make it easy to build and rebuild micro- and nano-fluidic circuits. All products are inter-compatible and quick to assemble, taking the hassle out of fluid routing.

- **SPS01 Programmable Syringe Pumps** deliver volumes up to 100 microliters, with resolution as low as 2 nanoliters. The pump body design allows syringes to be easily removed and replaced, providing a wide range of volumes with a single pump.
- **AV201 Automated Selector Valves** provide 2-position, 3-port switching, with zero dead volumes and low swept volumes.
- **AV202 Automated Selector Valves** provide 2-position, 4-port switching, with zero dead volumes and low swept volumes.
- **uPS Pressure Sensors** provide pressure sensing and regulation.

The **uProcess Software** provides a simple interface for configuring and controlling uProcess devices and for creating automated processes for coordinated control.

This user guide will show you how to connect, configure and control uProcess devices, how to install and operate uProcess software, and how to create automated flow control processes.

Please contact LabSmith or visit [www.labsmith.com](http://www.labsmith.com) for user manual, software and firmware updates.

## Equipment List

uProcess software communicates with uProcess devices through the **Electronic Interface Board (EIB)**. The EIB is typically connected via communication cable through one of the LabSmith breadboards (uPB, iBB, etc.), enabling control over multiple devices (**Figure 1**).

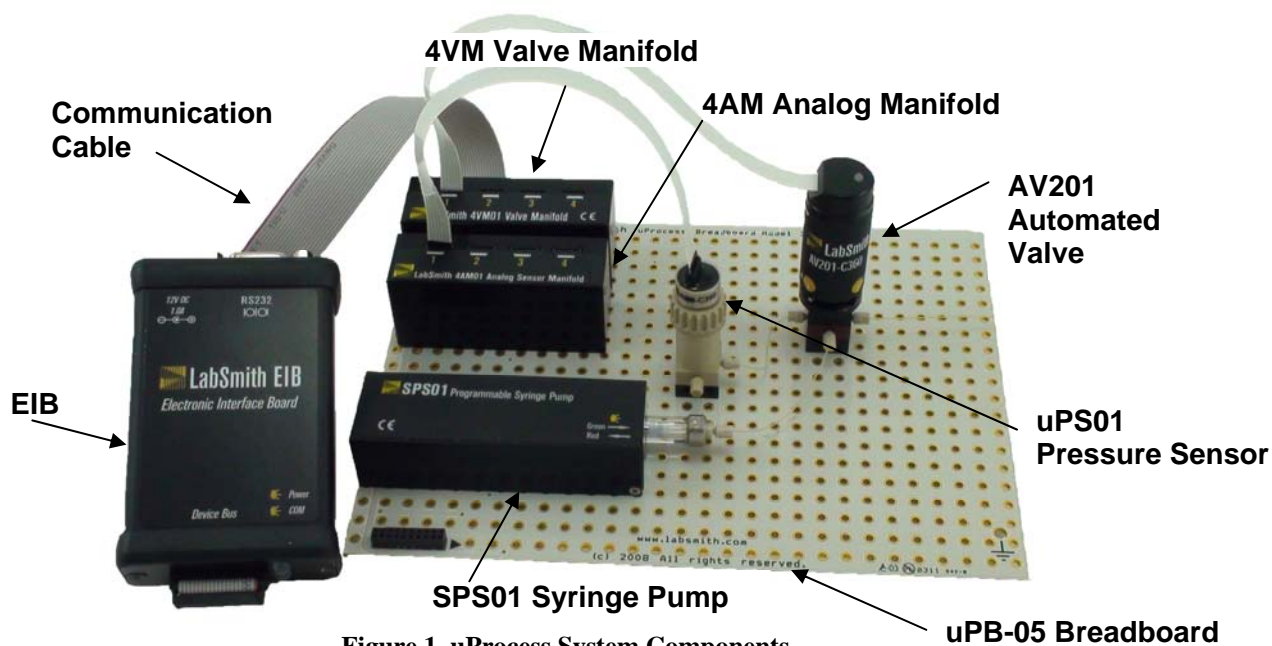


Figure 1. uProcess System Components.

The EIB can also connect directly to a single SPS01 syringe pump, to a 4VM01 valve manifold, or to a 4AM01 analog manifold, without a breadboard.

The EIB connects to the computer via the RS232 cable, or to a USB port with optional RS232 to USB adapter.

## Required Equipment

- PC-compatible computer running Windows® XP, NT, 7 or 8
- Electronic Interface Board (EIB)
- uProcess™ software (installation disk included) – included with EIB purchase
- 12V power supply for EIB – included with EIB purchase
- RS232 serial interface cable – included with EIB purchase
- 20-pin communication cable – included with EIB purchase

### Additional required and optional equipment for **syringe pumps**

- SPS01 Programmable Syringe Pump
- SPS01 syringe glass/plunger set – included with SPS01 purchase
- CapTite ferrule (C360-100 or T116-100) for connecting to capillary or tubing
- syringe glass/plunger installation tools (plunger wrench and 3/32" hex wrench)
- installation screws (qty 2 x M3), optional

### Additional required and optional equipment for **automated valves**

- AV201 or AV202 automated valve
- 4VM01 valve manifold (one manifold per up to four valves)
- flat ribbon connector (one per valve) – included with 4VM01 purchase
- Three (3) CapTite ferrules (C360-100, T132-100, or T116-100) for connecting to capillary or tubing
- breadboard mounting screws (2-28x1/4"), two per valve, optional

### Additional equipment required for **pressure sensors**

- uPS pressure sensor
- 4AM01 analog manifold (one manifold per up to four sensors)
- flat ribbon connector (one per sensor) – 4 x included with 4AM01 purchase
- CapTite component (-C360, -T132, or -T116) with female port for installing sensor

## Optional Equipment

- uPB or iBB breadboard
- RS232 to USB adapter cable

## Cautions and Warnings

When working with uProcess devices and accompanying electronics, follow standard procedures to protect your devices from excessive static electricity, power fluctuations, etc.

Read and understand all documentation for your individual uProcess devices and components before connecting the equipment.

**CAUTION:** Extra care must be taken when using the electronic components with fluids. Breadboards are designed with the electronics on one side; use precautions when introducing liquids to this side of the breadboard.

## Getting Help

This guide is your main source for information on operating uProcess software. Choose **Help>About uProcess**, then click the **Open User Manual** link to browse this manual electronically, in Adobe® Acrobat® PDF format.

The LabSmith web site ([www.labsmith.com](http://www.labsmith.com)) also includes helpful applications notes and other technical information to help you use uProcess software and devices. If you are unable to find the information you need, please contact our technical support team at (925) 292-5161, or email us at [support@labsmith.com](mailto:support@labsmith.com). Be prepared to give the software version. To determine the software version number, select **Help>About uProcess**.

## About This Manual

Several conventions are used throughout this manual to highlight important features and concepts:

**Menu>Option** Menu bar selections will be shown in bold text, with descending options separated by the ">" symbol. For example, **Help>About uProcess** indicates that you should click the **Help** menu, and then click **About uProcess**.

**Note** Notes indicate helpful tips or additional information.

**CAUTION** These notes signify important considerations that will help you to avoid losing data or damaging hardware.

**Italics** When browsing the electronic version of this manual, click on these italic cross-references to view other pertinent sections of the manual.

Choose **Help>About uProcess**, then click the **Open User Manual** link to browse the electronic version of this manual.

## CHAPTER 2. GETTING STARTED

### Connecting an Electronic Interface Board

Though the devices you use with your uProcess system will vary, some basic hardware is common to all uProcess setups.

Every system requires at least one Electronic Interface Board (EIB), which can control up to 110 SPS01 Syringe Pumps, 4VM01 Valve Manifolds, and/or 4AM01 Analog Manifolds. Since each manifold can control up to four devices, one EIB can thereby control hundreds of devices.

Although over 100 devices can be sequentially controlled using a single EIB, the number of devices simultaneously actuate is limited and depends on the type of device being actuated. Multiple EIBs can be used at one time when a large number of devices or concurrent operations are required.

To connect an EIB to the computer:

- Connect the serial interface cable from the COM port on the EIB to the computer's RS232 port. An optional RS232 to USB adapter allows you to connect the EIB to a USB port instead.
- Connect the power transformer from the EIB to a wall outlet. The two indicator lights will flash when powered up, after which the Power light will stay illuminated red. The COM light will illuminate when the EIB is communicating with the computer.

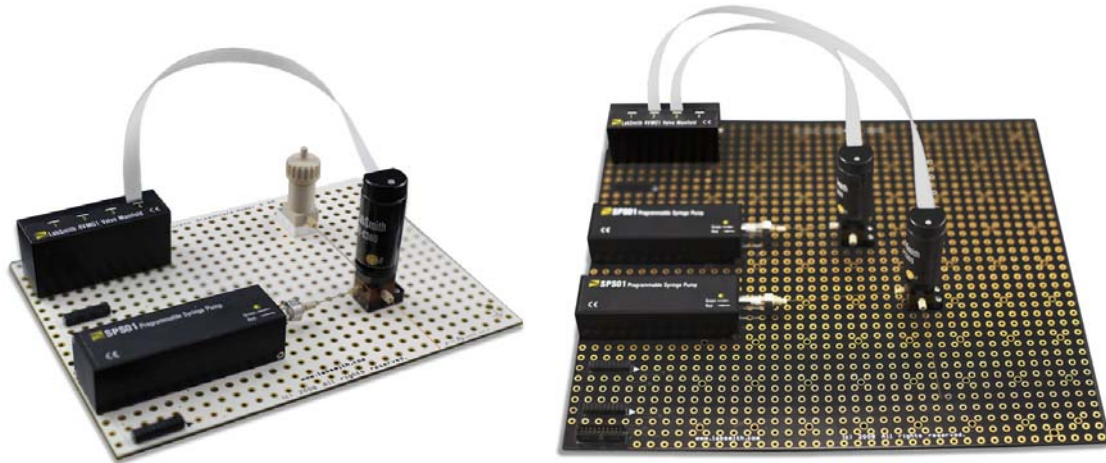
### Adding a Breadboard

An EIB can be connected to a single syringe pump, valve manifold, or analog manifold; however, it is typically used with one of the LabSmith breadboards (uPB-5, uPB-8, uPB-12, or iBB) for mounting multiple components ([Figure 2](#)). Between 5 and 12 uDevices (syringe pumps, valve manifolds, analog manifolds) can be connected to a single breadboard.

To add a breadboard, connect the 20-pin communication cable from the **Device Bus** port on the EIB to one of the female connectors on the breadboard. Line up the tab on the communication cable with the notch on the connector.

The larger breadboards (uPB-8, uPB-12, and iBB) can be daisy-chained together by installing a 20-pin communication cable between female connectors on each board.





**Figure 2. uPB-05 and uPB-08 Breadboards with uDevices.**

The following sections provide information on installing the various devices available for the uProcess system.

**Note:** it is best to disconnect power to the EIB before adding or removing devices

## Installing Automated Valves

To install and configure AV201 or AV202 automated valves:

- Plug the 4VM01 valve manifold into one of the connectors located along the side of the breadboard.
- Secure the automated valve(s) to the desired location on the breadboard using two ¼" breadboard mounting screws (optional).
- Use a ribbon cable to connect the automated valve to a port on the valve manifold. Observe the label on the valve and manifold to ensure the cable is connected at the correct orientation.
- Upon power up, the LED on the 4VM01 will flash red/green and then glow steady green. The valve LED does not illuminate during power up.

## Installing Syringe Pumps

To install an SPS01 programmable syringe pump, plug the syringe pump body into one of the connectors located along the side of the breadboard. Two M3 screws may optionally be used to more securely attach the syringe to the bottom of the breadboard.

Upon power up, the LED on the SPS01 will flash red/green and then go out.

## Installing Pressure Sensors

To install and configure uPS pressure sensors:

- Plug the 4AM01 sensor manifold into one of the connectors located along the side of the breadboard.

- Secure the pressure sensor(s) to the desired component. Note: the uPS360 sensors can be installed in a –C360 or –T132 CapTite component (for use with 360µm OD tubing or 1/32" OD tubing, respectively) The uPS116 sensors can be installed in a –T116 component, for use with 1/16" OD tubing.
- Use a ribbon cable to connect the pressure sensor to a port on the analog manifold. Observe the label on the manifold to ensure the cable is connected at the correct orientation.

**Note:** the orientation of the connector on the 4AM01 is the opposite of the orientation of the connector on the 4VM01.

- Connect the ribbon cable to the uPS sensor with the following orientation:



Upon power up, the LED on the 4AM01 will flash red/green and then go out.

## Installing uProcess Software

uProcess software runs on any PC-compatible computer running Microsoft Windows® XP, NT, 7, or 8. The software requires approximately 5MB of free disk space. To install uProcess:

- Insert the uProcess for Windows CD.
- Double-click **SETUP.EXE** and follow the on-screen instructions.
- To run the software, double-click the **uProcess** icon on your desktop, or choose **Run>uProcess>uProcess**.
- The uProcess software can also be downloaded from the LabSmith website ([www.labsmith.com](http://www.labsmith.com)) . We recommend visiting the website occasionally to check for software updates.

## CHAPTER 3. uPROCESS SOFTWARE

### Software Interface

The **uProcess Dashboard** consists of a menu bar, toolbar, and configurable windows ([Figure 3](#)). Unique menu and toolbar commands will be described in the body of the text below. A complete listing of all menu and toolbar commands can be found in [Appendix A. Menus, Toolbars, Window Controls](#).

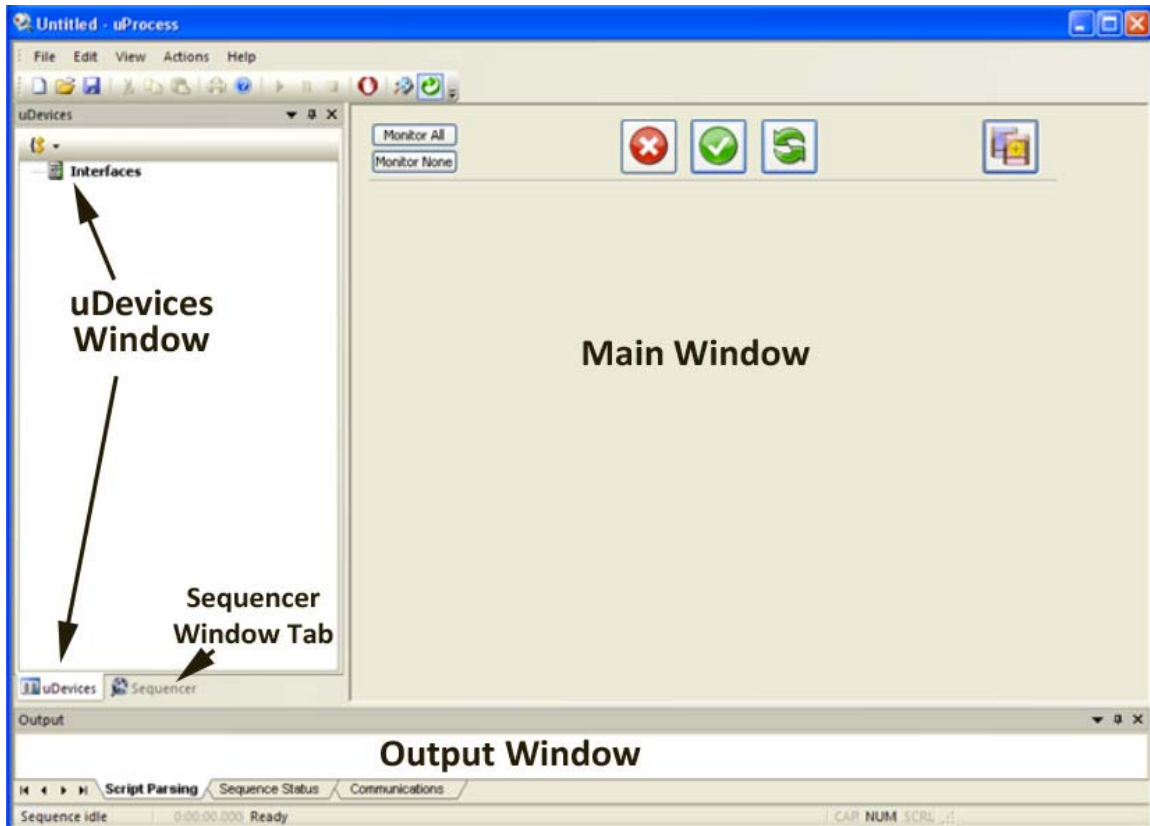
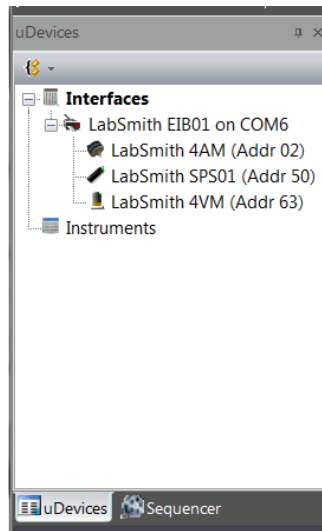


Figure 3. uProcess Dashboard.

The uProcess Dashboard consists of 5 windows, described below. You can customize the placement of the windows on the dashboard and a number of other features about the interface. See [Customizing the Dashboard](#) for more information.

### uDevices Window

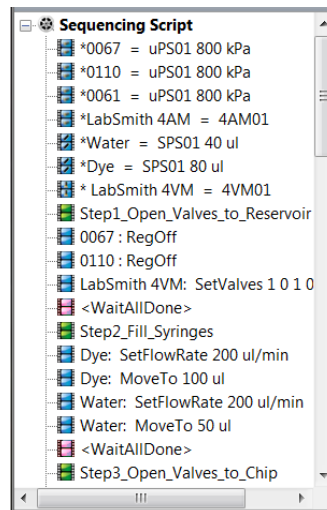
The uDevices Window is used to view, add, and configure individual devices and EIBs ([Figure 4](#)). It shares the left side of the Dashboard with the Sequencer Window. Click the tabs at the bottom of this area to switch between the two windows.



**Figure 4. uDevices Window.**

## Sequencer Window

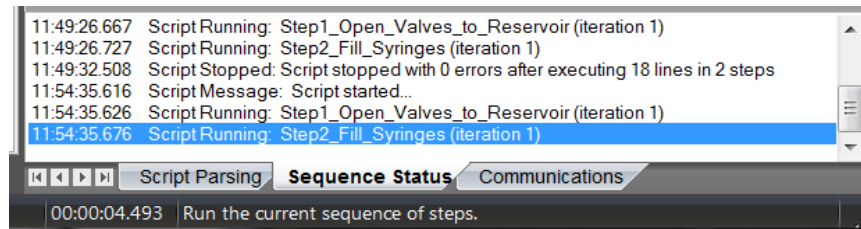
The Sequencer Window is used to view a sequence program ([Figure 5](#)). The uDevices Window is used to view, add, and configure individual devices and EIBs. It shares the left side of the Dashboard with the Sequencer Window. Click the tabs at the bottom of this area to switch between the two windows.



**Figure 5. Sequencer Window.**

## Output Window

The Output Window is used to monitor device communications or to debug and monitor a sequence program ([Figure 6](#)). By default this window appears at the bottom of the dashboard.



**Figure 6. Output Window Showing Script Parsing Tab.**

The Output Window contains three tabs:

**Script Parsing** displays any errors in the current automated process.

**Sequence Status** indicates which process is running and notes any errors incurred.

**Communications** shows the status and history of communication between the Electronic Interface Board and the computer.

## Main Window

The Main Window is used to control and monitor devices, as well as to construct, edit, and monitor sequence programs. Its contents change depending upon what is selected in the *uDevices Window* or *Sequencer Window*. The Main Window cannot be undocked or hidden.

## Communicating with the uDevices

Once the uDevice hardware and uProcess software have been installed you are ready to communicate with the devices.

Launch the uProcess software.

Right-click on Interfaces in the uDevices Window and choose New Interface.

Select the computer port to which the EIB is connected, and click **OK**. If multiple EIBs are installed, repeat this step for each EIB.

Your uProcess dashboard should now look similar to *Figure 7*.

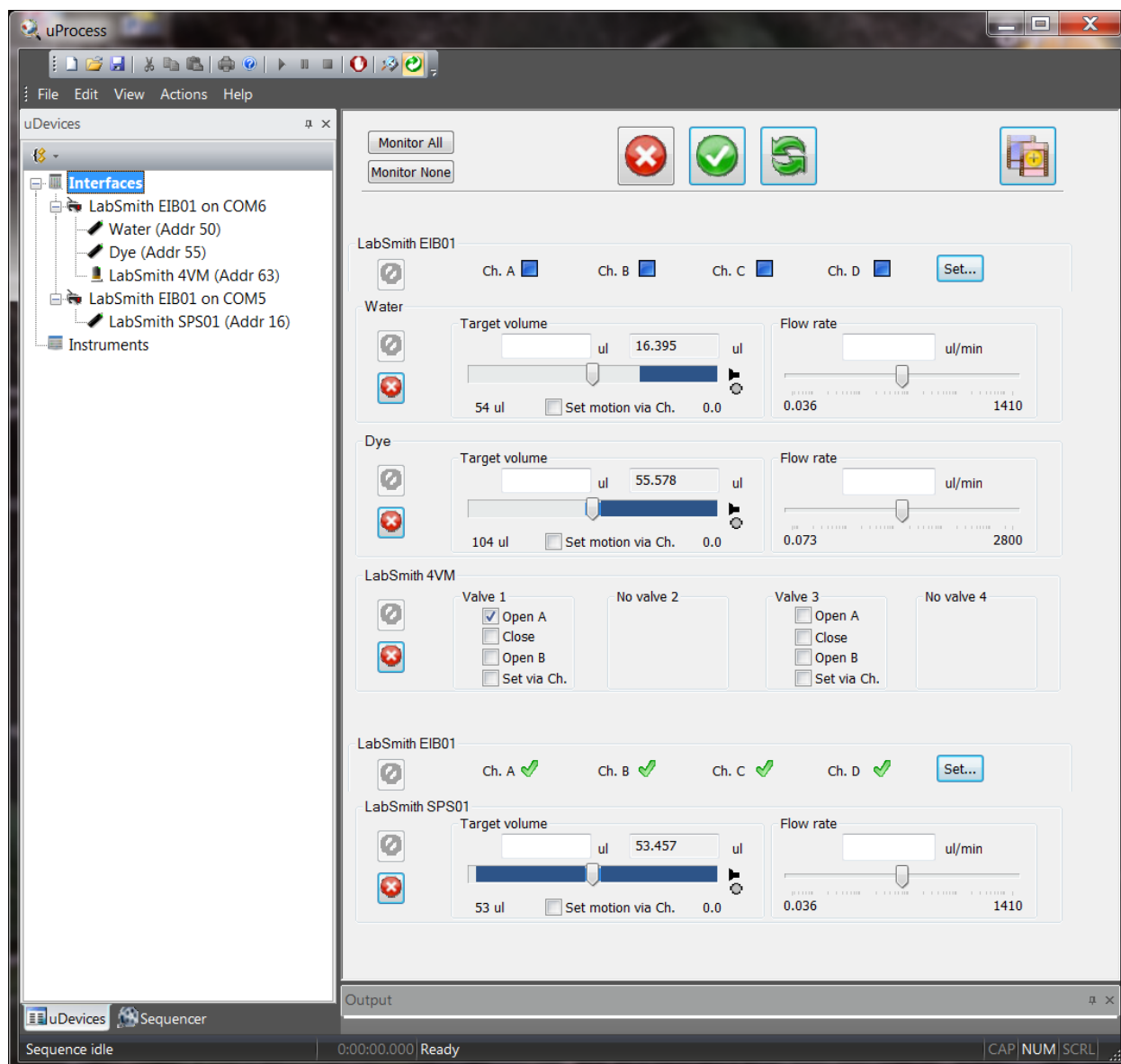


Figure 7. uProcess Dashboard.

The **uDevices Window** contains a tree structure listing each EIB and the devices installed under each. In [Figure 7](#) two EIBs are connected. Two SPS01 syringe pumps and a 4VM are connected to the EIB on COM6. A SPS01 syringe pump is connected to the EIB on COM5.

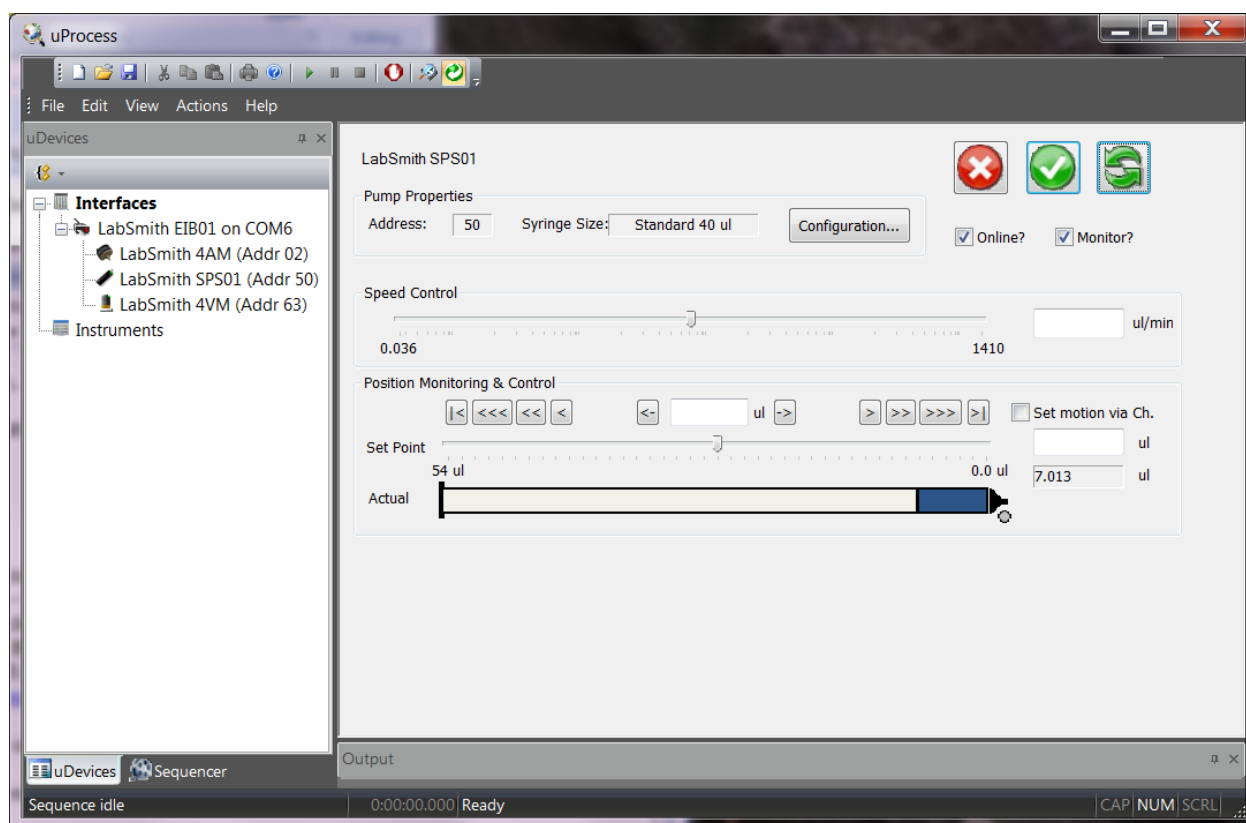
**Note:** Breadboards will not appear as device in the uDevices tab since there are no functions to control on the breadboard itself.

With the uDevice window selected, the Main Window will show one of two views: the **Control Overview Window** or the **Individual Device Control Panel**.

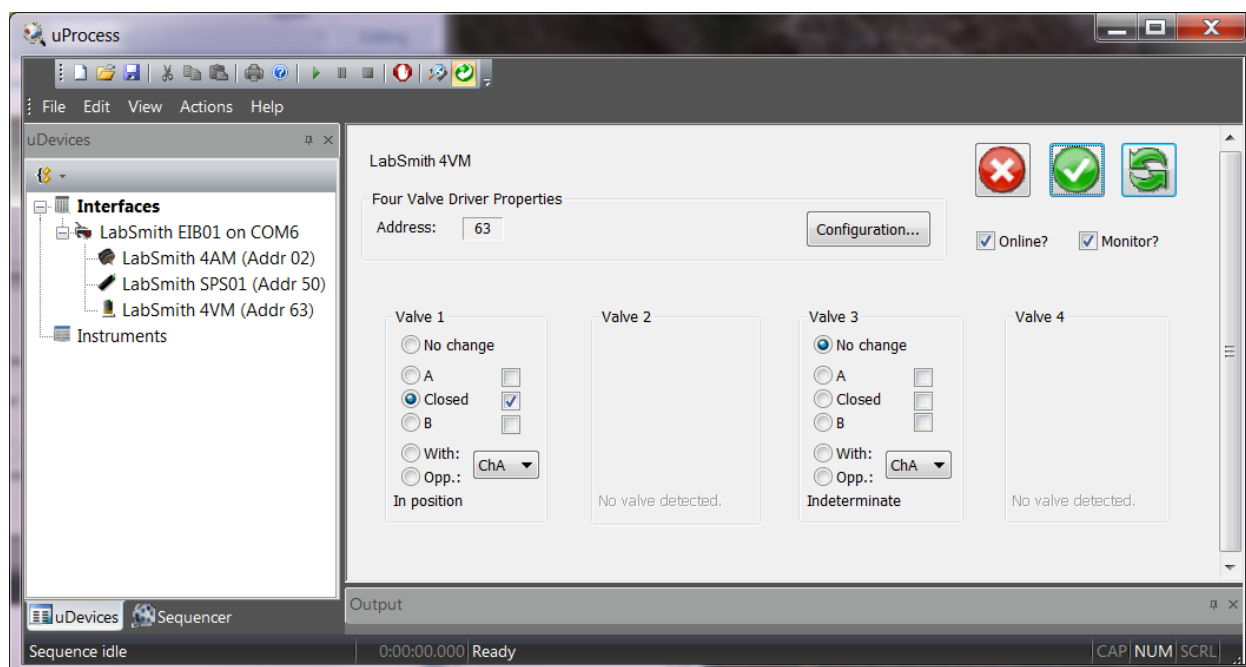
The **Control Overview Window** allows limited control of all devices. It is also the view that will be used to program sequences using the programming wizard (see [Create a Script Using the Wizard](#)).

By clicking on one of the individual device names in the uDevices Window, the **Individual Device Control Panel** opens. [Figure 8](#) shows the control panel for a syringe pump, [Figure 9](#) shows controls for a 4VM01 valve manifold. [Figure 9](#) shows controls for a 4AM01 analog

manifold. The **Individual Device Control Panel** provides a wider range of control and setting options for an individual device than is available in the **Control Overview Window**.



**Figure 8. Control Panel for Syringe Pump.**



**Figure 9. Control Panel for Valve Manifold. Valves installed in position 1 and 3.**

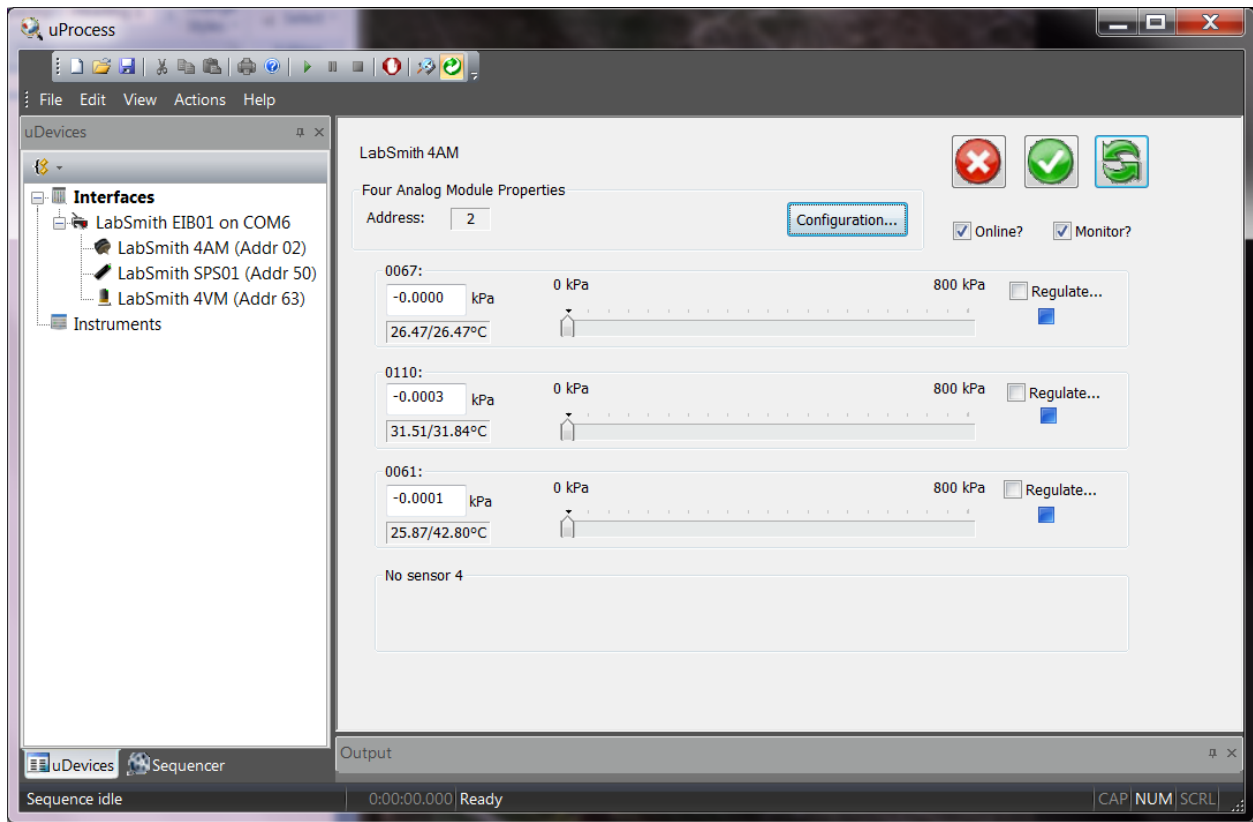



Figure 10 Control Panel for Analog Manifold. uPS pressure sensors installed in positions 1, 2, and 3.

## Online and Offline

The communication status of each device is shown in the *uDevices Window*. To monitor or control a device, the device, its EIB, and the interface must all be online.

As shown in **Error! Reference source not found.**, the icon to the left of each device will indicate whether it is Offline (not in communication with the computer) or Online (in communication). In this example the EIB on COM11 is offline, and the EIB on COM1 is online.

To change the status of a device or EIB, right-click the device in the *uDevices Window* and check/uncheck the Online setting.

To toggle all connected devices to online or offline, click the **Online** toolbar button .

**Note:** An EIB will go offline if there is a communication error between the COM port and the EIB. Two red lights on the EIB also indicate a communication problem. This error often indicates a bad cable connection. The **Communications** tab of the Output Window lists the EIB port communication status and history.



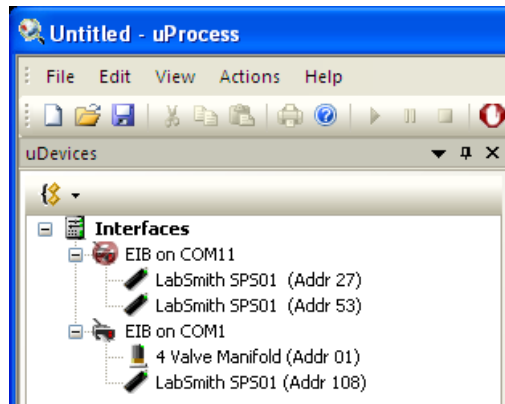


Figure 11 Devices Shown Offline (EIB on Com11) and Online (EIB on COM1).

## Device Naming and Numbering

Every uDevice (syringe pump, valve manifold, or analog manifold) is identified by an address and name. The uPS pressure sensors also are individually named

**Note:** Clicking on the device name in the *uDevices Window* will cause the indicator light on the device to flash red/green. This feature aids in quickly identifying each device.

## Device Address

Each device attached to an EIB must be assigned a unique address between 0 and 110. If you purchased several devices at the same time from LabSmith they will be preconfigured with unique addresses.

Device addresses are shown next to each device in the uDevices Window and also on in the Address field of the

**Note:** If multiple devices on the same EIB have identical addresses they may not appear in the *uDevices Window* list, or they may appear as one device. Operating in this condition can cause unpredictable results.

If two devices with the same address are installed, one will need to be removed before the address can be changed.

**Note:** The address assigned to each device is independent of its physical position on a breadboard. Devices will be displayed in numerical order on the control panel for each EIB based on the device address, not the position on the breadboard.

To change a device address:

Select the device in the uDevices Window.

Choose Configuration.

Select a **Device Address** from the dropdown menu and click **OK**.

You can also right-click on the device icon in the *uDevices Window* and choose Change Address.

## Device Name

Your uDevices will arrive with a default name: “LabSmith SPS01” for the syringe pump, “LabSmith 4VM” for the 4VM01; and “LabSmith 4AM” for the 4AM01.

You can rename the devices. The name may have a maximum of 16 characters and may not include ‘;’, ‘<’, ‘>’, ‘\*’ or ‘=’. Names may include tabs and spaces but may not start or end with them. Names are case-sensitive.

If you will be using automated processes, each installed device name must be unique.

To change a device name:

Select the device in the uDevices Window.

Choose Configuration.



Type the new device name in the **Name** field.


You can also right-click on the device icon in the *uDevices Window* and choose Rename.

Each pressure sensor arrives with the last four numbers of the serial number as the sensor name. Please see the sensor configuration section of the user’s manual for information on changing the sensor name.

## Adding or Removing uDevices

To add or remove a device:

- Click the **Online** toolbar button  to toggle all interfaces offline.
- Physically add or remove the uDevice(s) to or from the breadboard.
- Click the **Online** toolbar button  to toggle all interfaces back online.

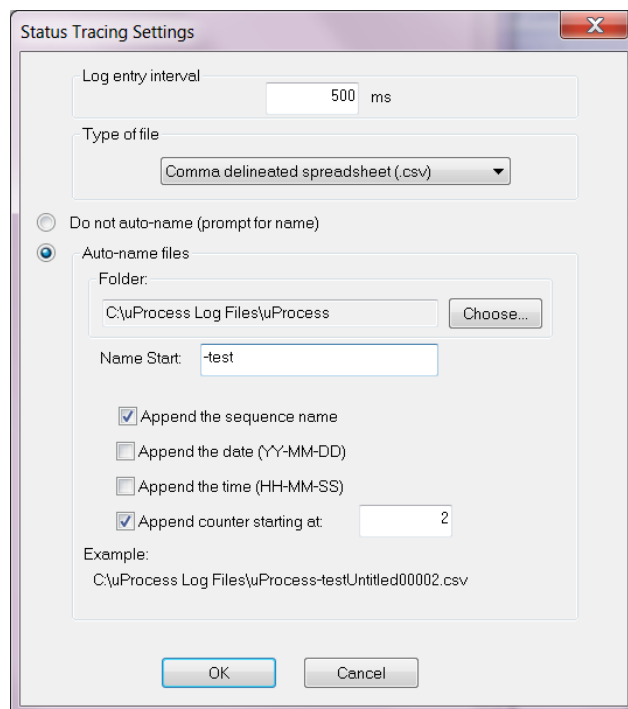
Click the **Rescan** toolbar button  to check for new devices. Any added devices should now appear in the *uDevices Window*, while any removed devices will be gone.

Note: To rescan an individual EIB right-click its icon in the *uDevices Window*, then choose Rescan Devices.

## Saving Data into a Log File

Time-resolved data can be saved into a log file (format .csv) for later viewing and plotting. Choose File>Log Status/Measurements... to create a log file. When log file data is being collected there will be a check mark next to the “Log Status/Measurements...” item in the menu. The file will continue to collect data until you uncheck the box, close the software, or change any of the uDevices (add or remove devices).

Log file preferences are set using View>Status/Meas Logging Options..., which brings up the **Status Tracing Settings** window.



Settings such as data recording rate, file time, file auto-naming are controlled from the **Status tracing Settings** window.

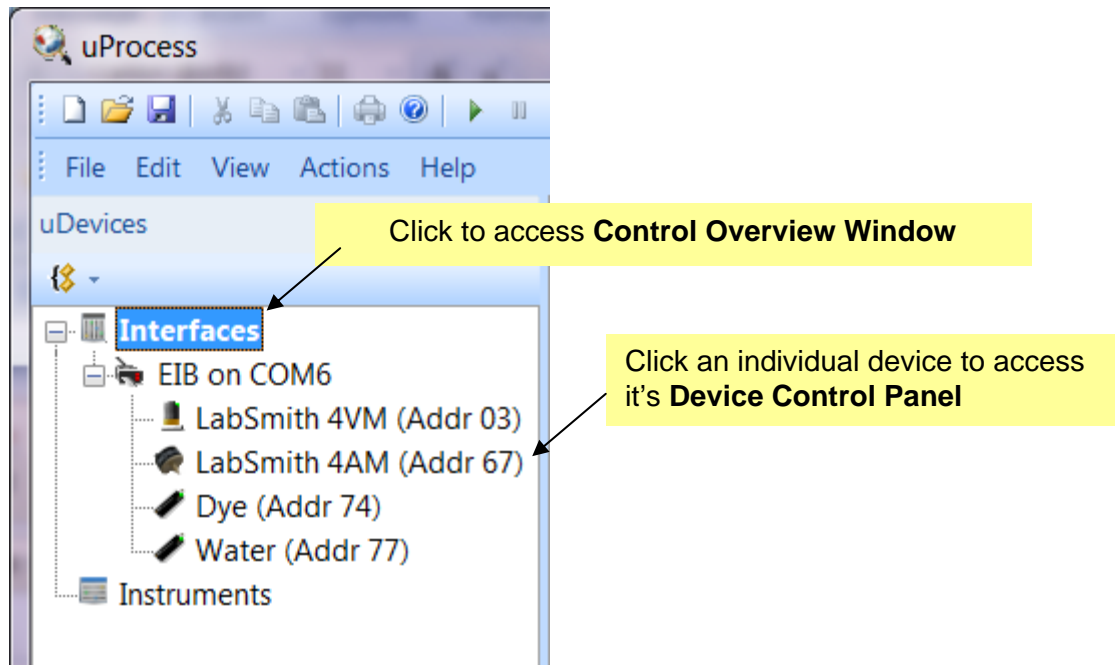
## External Instruments

The uProcess software supports several third-party instruments. These instruments are connected to the computer via USB or RS-232 connection and, depending on the instrument, can be monitored and/or controlled. Contact LabSmith support ([support@labsmith.com](mailto:support@labsmith.com)) for information and instructions on supported instruments.

## CHAPTER 4. REAL TIME DEVICE CONTROL

uProcess lets you control connected devices manually or as part of an automated process. uDevice control can be accessed two ways:

- through the **Control Overview Window** (accessed by clicking on the Interfaces heading in the uDevices window)
- or through an individual **Device Control Panel**, which can be accessed by clicking on the device name in the uDevices window



The **Control Overview Window** gives you a convenient way to view and set the controls for multiple devices, which is particularly useful when setting up the steps of an automated process, or when controlling multiple devices via pressure regulation. Figure 12 shows a typical **Control Overview Window**. The individual **Device Control Panels** can be selected for additional controls for the particular devices.

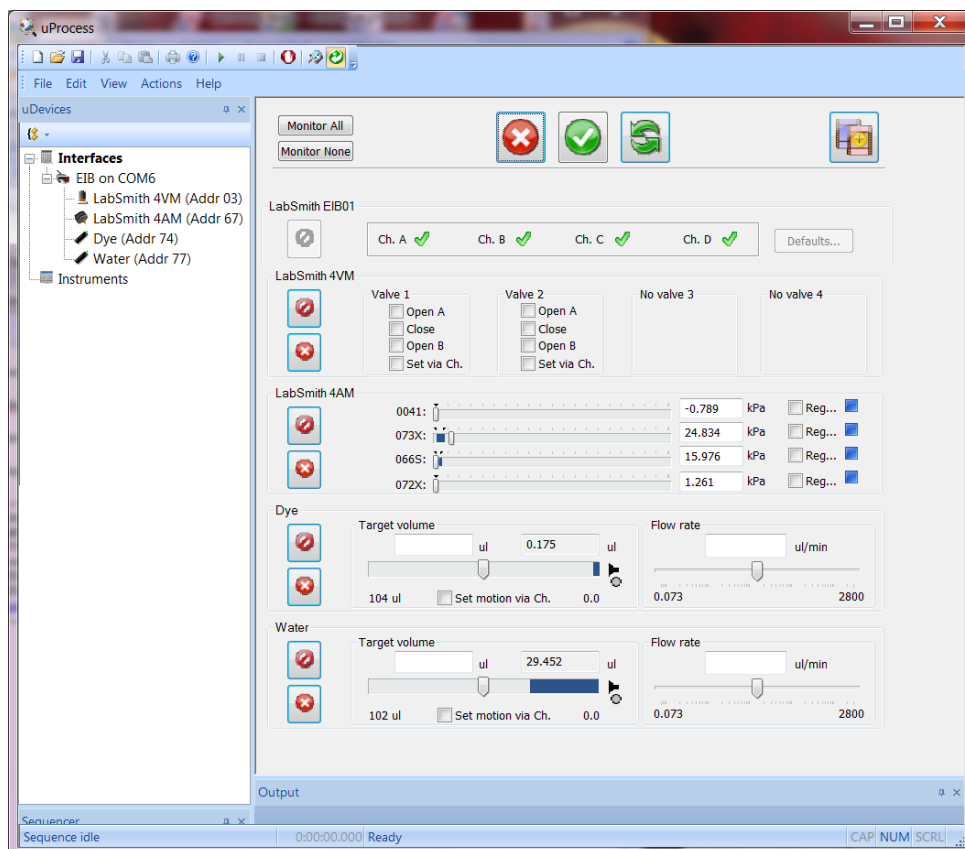


Figure 12 Example of Control Overview Window

## uDevice Controls

Individual uDevices can be controlled via the Device Control Overview Window (shown in Figure 12) or via its individual Device Control Panel. The controls for each type of uDevice are described below.

## Analog Manifold Control

The analog manifold controls are used to monitor and control the uPS pressure sensors. Typical Control Overview Window and Analog Manifold Control Panel views are shown in Figure 13 and Figure 14, respectively.

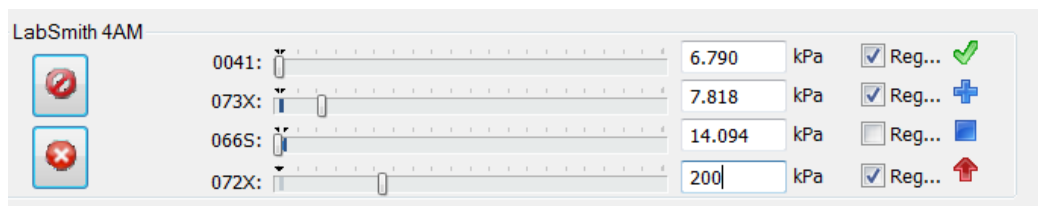
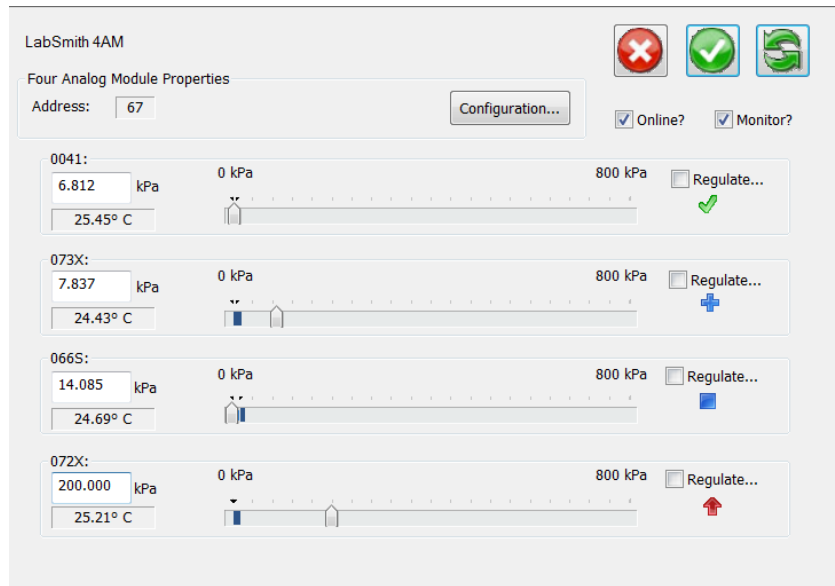


Figure 13 Typical Control Overview Window view of analog manifold controls.



**Figure 14 Typical Analog Manifold Control Panel view.**

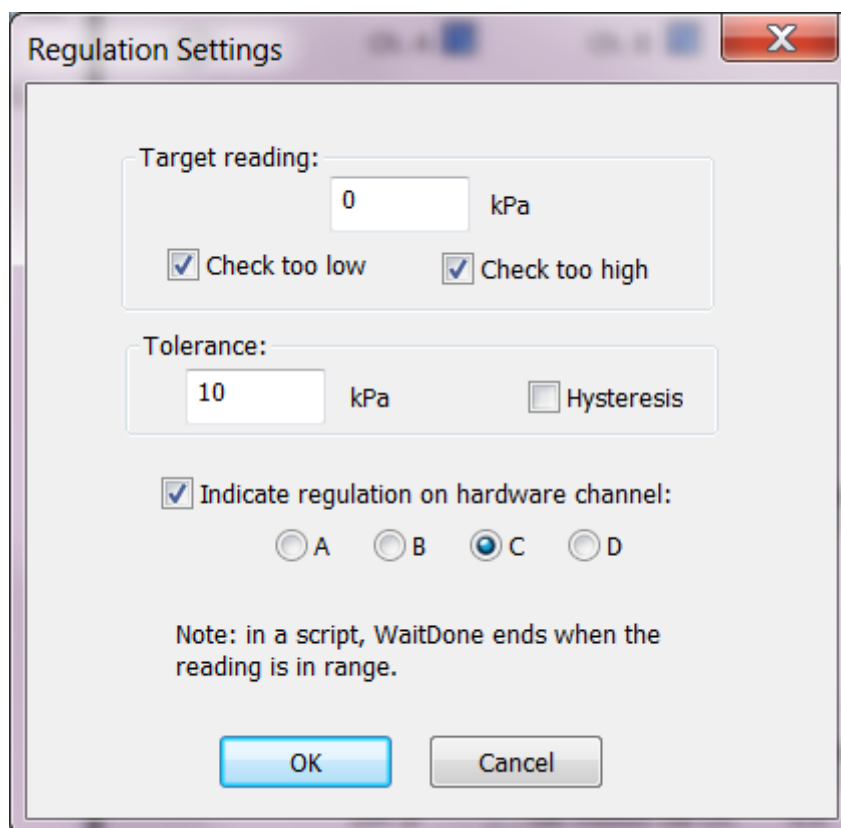
The following commands and information are available for each connected uPS pressure sensor:

- 4AM01 Name                      Set name for the 4AM01
- Sensor Name                    Set name for the pressure sensor
- Pressure Reading                Current sensor pressure reading
- Regulation Pressure            The regulation pressure can be set by moving the slider bar, or by typing the desired pressure in the pressure reading box
- Ambient Temperature\*        This is the pressure sensor ambient temperature, not the fluid temperature.
- Scale\*                            Indicates pressure scale for slider bar (scale can be set in the Configuration window)

\* ambient temperature and scale are not displayed in the **Control Overview Window**

Regulation Status Indicators show the current regulation status (regulating up, regulating down, regulation satisfied, unregulated). See **Channel Regulation** below for more information.

Clicking on “Reg.” or “Regulate...” brings up the Regulation Settings Window, as shown in Figure 15. From this window you can set the regulation target reading and choose a hardware channel to output the regulation status.



**Figure 15 Regulation Setting Window**

The following options are available for the Regulation Settings Window:

**Target reading:** input target pressure value in specified units






- **Check too low:** the sensor will regulate up to the input value
- **Check too high:** the sensor will regulate down to the input value, when the actual pressure is equal to or below the target reading the regulation will be complete.
- If both **Check too low** and **Check too high** are selected, the sensor will regulate both up and down.

**Tolerance:** input +/- tolerance for target reading.


- The sensor will regulate until the pressure value is within the target +/- tolerance.
- **Hysteresis:** checking this option causes the pressure to regulate to the target value, and then the regulation stops until the pressure falls outside the tolerance level.

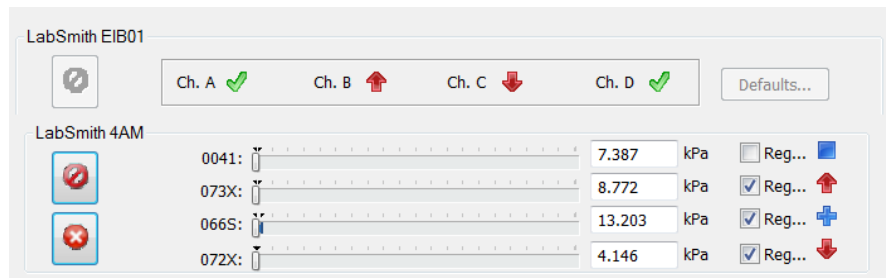
**Channel Regulation:** check the box and select the channel to send the regulation status to an EIB hardware channel. Channel regulation can be used to couple the pressure sensor to a SPS01 syringe pump or automated valve to actuate the syringe or valve based on the pressure regulation status.

If a hardware channel is selected, the channel status will be shown on the EIB control window and the analog sensor panel. **Regulation Status Indicators** include:

	Regulating Up
	Regulation satisfied
	<b>Regulating</b> down
	Unregulated
	Regulation pending, but not set

For the example shown below:

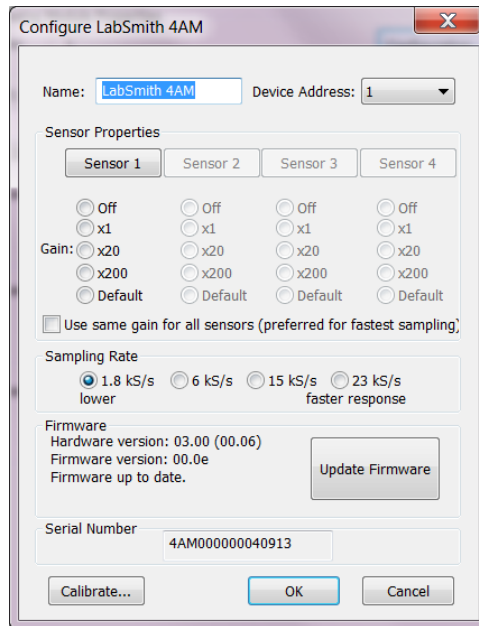
- uPS 0041 is unregulated
- uPS 073X is regulating up and set to hardware channel B
- uPS 066S has is pending, but not set so the regulation type is unknown (the user would press 'apply settings now'  to set the programming)
- uPS 072X is regulating down and is set to hardware channel C



## 4AM01 and Sensor Configuration Settings

Several configuration settings are available to optimize performance of the 4AM01 and pressure sensors. Click on the 'Configuration...' button of the 4AM01 device window to open the *Configure LabSmith 4AM* window shown in Figure 16.





**Figure 16 4AM01 Configuration Settings**

The gain setting is used to optimize the gain for device and scale range of interest. For the uPS pressure sensors, the gain readings should be applied as follows:

- Off: does not sample sensor
- x1: not applicable for uPS pressure sensors
- x20: for full-scale pressure readings (default for uPS pressure sensors)
- x200: for applications where the pressures will be up to a max of ~10% of full scale

Therefore, for a uPS01-800 pressure sensor, if the measured pressures are expected to be less than 80 kPa, use the x200 gain setting for the most accurate results.

The default sampling rate is 1.8 kS/s. This rate has the lowest noise and will be suitable for most applications.

### **Zero Offset**

The zero reading on the pressure sensors will drift slightly (typically less than  $\sim\pm 2$  kPa) over time, especially if there are large swings in the sensor temperature. We recommend that you occasionally re-zero the sensors to eliminate the zero offset.

Procedure:

1. Power up the sensors and 4AM and wait for about 5 minutes for the 4AM to warm up.
2. Click on each sensor to bring up its Sensor Properties window (Figure 17)
3. Click the 'Zero Reading' button to zero the pressure sensor.

**Figure 17 Sensor Properties Window**

The *Sensor Properties Window* provides the following additional controls

- Sensor Name: the default name is the last 4 numbers of the Sensor serial number
- Display Units: default units are kPa, a conversion factor can be input to display the pressure in units other than kPa
- Display limits: these are the limits displayed in the *Control Overview Window* and the *Analog Manifold Control Panel*
- Calibration: please contact LabSmith before changing the calibration
- Factory Settings: please contact LabSmith before changing the factory settings

## Syringe Pump Control

Syringe pump control of set volume, flow rate, and pressure regulation settings can be manipulated via the Device Control Overview Window, as shown in Figure 18. The Syringe Pump uDevice Control Panel (Figure 19) provides additional position control options and Configuration settings.

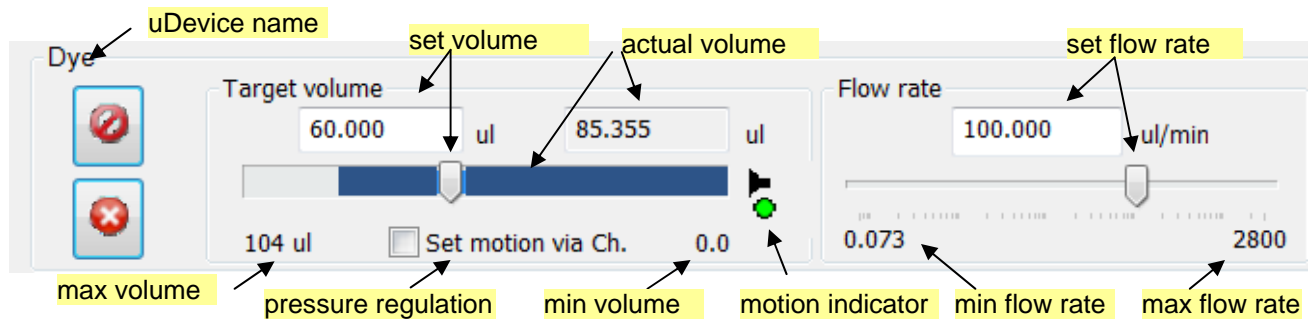


Figure 18 Syringe pump control options in the Device Control Overview Window

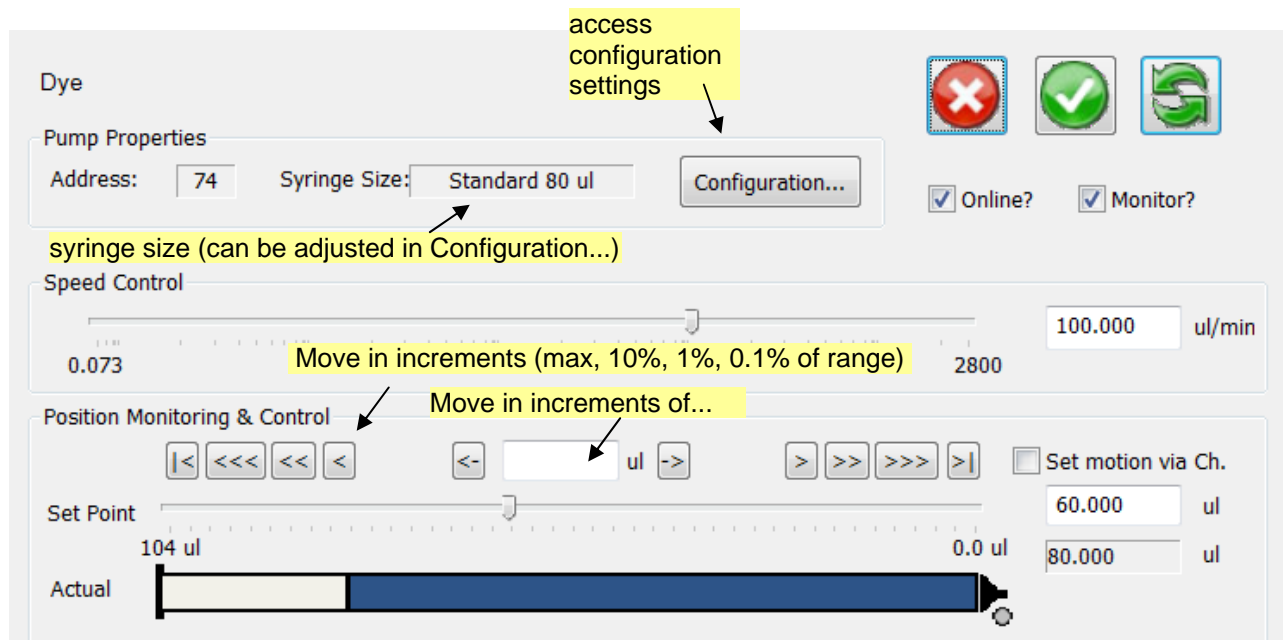







Figure 19 Additional syringe pump control options available in the Syringe Pump uDevice Control Panel.

**Target Volume** is set by dragging the volume slider, or entering the desired volume in the Target volume box.

**Flow Rate** is set by dragging the flow rate slider, or entering the desired rate in the Flow rate box.

**Note:** If **Update All uDevices Continuously** (  ) is selected, changes in target volume or flow rate are immediately applied. If not selected, the pump settings will not change until **Apply All Settings Now** (  ) or  is selected.

The **Motion Indicator** shows the pump motion

-  green indicates that the pump is pushing
-  red indicates that pump is pulling



grey indicates the pump is stationary



a red X next to the syringe tip indicates the pump is stalled

The syringe pump can be used to regulate pressure by clicking on the Set motion via Ch. until the desired Channel setting is selected. The Channel Setting options are:

### ***Move with Ch. X***

Syringe pump will “push” when pressure on Ch X is below the desired setting.

Syringe pump will “pull” when pressure on Ch X is above the desired setting.

### ***Move opp. Ch. X***

Syringe pump will “pull” when pressure on Ch X is below the desired setting.

Syringe pump will “push” when pressure on Ch X is above the desired setting.

**Note:** Clicking on the target volume input box or moving the volume slider will disable the pressure regulation.

See Analog Manifold Settings for more information on regulating a uPS pressure sensor via a channel setting.

## **Optimizing Syringe Pump Performance**

The syringe pump is designed for optimal accuracy in the push (infuse) direction. The pump motor design includes an anti-backlash spring, which can cause minor volume inaccuracy in the pull direction. In addition, when changing the syringe direction from pull to push, or vice-versa, you may notice a slight delay before the syringe plunger starts advancing. The volume inaccuracy and duration of the delay will vary depending on the syringe size, set speed, system back pressure, and fluid viscosity.

To improve the timing and volume accuracy of an infusion we recommend pushing a small volume of fluid prior to starting the timed infusion. For example, if you want to pull 10  $\mu$ l of fluid from a reservoir and then push (infuse) it into a process, we recommend pulling 11  $\mu$ l of fluid, then push 1  $\mu$ l back into the reservoir before switching your valve to the infuse position.

## **Valve Manifold Control**

Click a valve manifold in the uDevices Window to view its control panel (Figure 20).

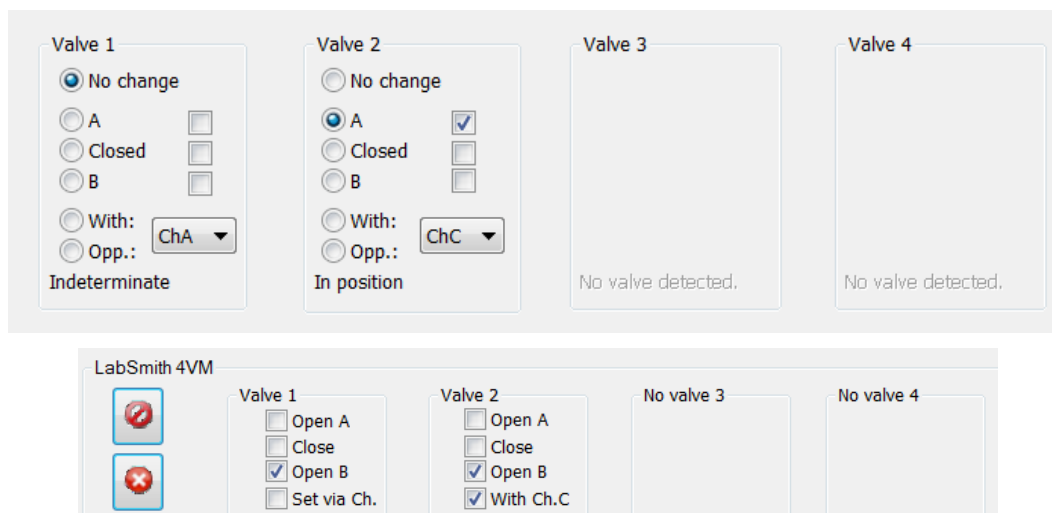


Figure 20. Controls for a 4VM01 valve manifold with AV201 or AV202 automated valves.

The valve can be actuated to three positions(see Figure 21) as shown below.

- No change** The valve state will not change, indicated as position “0” in script.
- A** The valve will allow flow to the left, indicated as position “1” in script.
- Closed** The valve will close, indicated as position “2” in script.
- B** The valve will open flow to the right, indicated as position “3” in script.

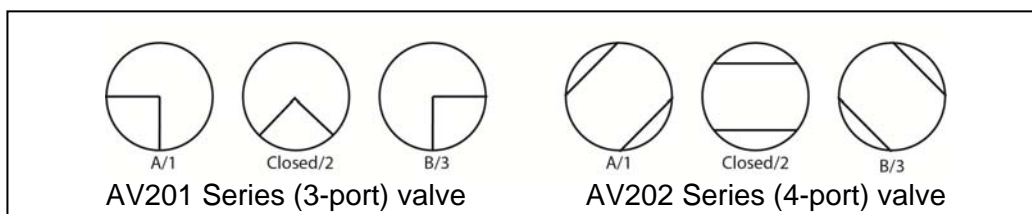


Figure 21. Shows the valve flow positions, looking down from the front of the valve.

The indicator lights on the valve will illuminate when it is being actuated. A red light indicates that it is being actuated to the “A” position, while a green light indicates it is being actuated to the “B” position.

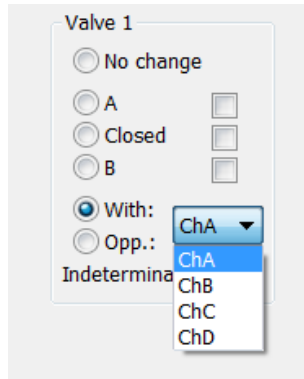
If the current valve state is known, there will be a check next to the state and the message below the valve will read “In position”.

If the current valve state is unknown (i.e. if power to the EIB has been cycled), none of the check boxes will be marked and the message below the valve will read “Indeterminate”.

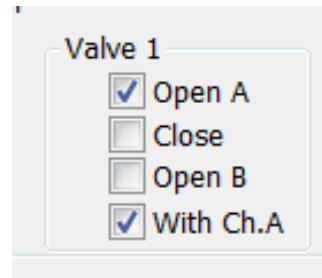
**NOTE:** if valve cables are switched while the EIB is powered the valve states could be incorrectly indicated. Remove power to the EIB before changing valves or moving cables.

If **Update Continuously** is selected, the valve will move immediately when you select a new position, and the check mark to the right of that position will be marked. When Update Continuously is not selected, choose the new position, then click **Apply Settings Now** to move the valve (the check mark for the new position will be then marked).

The valve can also be instructed to set based on channel regulation status.






or






**Set via Ch.** The valve will change states based on the regulation status (see Chapter 5).

If the valve is selected to move “**With**” the channel the default valve positions are:

-  **Regulating up** (pressure is too low): valve will move to position “B”
-  **Regulation achieved** (pressure is within range): valve will move to position “Closed”
-  **Regulating down** (pressure is too high): valve will move to position “A”


If the valve is selected to move “**Opposite**” the channel the default valve positions are:

-  **Regulating up**: valve will move to position “A”
-  **Regulation achieved**: valve will move to position “Closed”
-  **Regulating down**: valve will move to position “B”

## CHAPTER 5. AUTOMATED CONTROL

An automated script is a series of steps for controlling one or more automated devices. Each step can change the state of multiple devices. A script can be created using the Process Wizard, and it can be created or edited using the built-in text editor.

### Opening Script Files

Each automated script is stored as a file with a .usq extension. To open an existing script click the **Open**  toolbar button, then browse for the correct file. Its contents will appear in the **Main Window** (Figure 22).

```
$*Reagent Syringe      =      SPS01 80 ul
*Valve Manifold 1      =      4VM01
Fill_Syringe
  Valve Manifold 1:     SetValves 0 0 0 1
  Reagent Syringe:      SetFlowRate 50.000 ul/min
  Reagent Syringe:      MoveTo 100 ul
  <WaitAllDone>
Deliver_Reagent
  Valve Manifold 1:     SetValves 0 0 0 3
  Reagent Syringe:      SetFlowRate 10.000 ul/min
  Reagent Syringe:      MoveTo 0.000 ul
  <WaitAllDone>
```

Figure 22. Text of an Automated Process.

### Create a Script Using the Wizard

The Process Wizard provides a simplified interface for quickly generating automated scripts.

**Note:** Each installed syringe pump and 4VM01 must have a unique name, regardless of whether it is used in an automated script. See [Device Name](#).

To create a script using the Process Wizard:


Click the **New** toolbar button, or choose **File>New**. If a process is currently open, its contents will be copied into this new script.

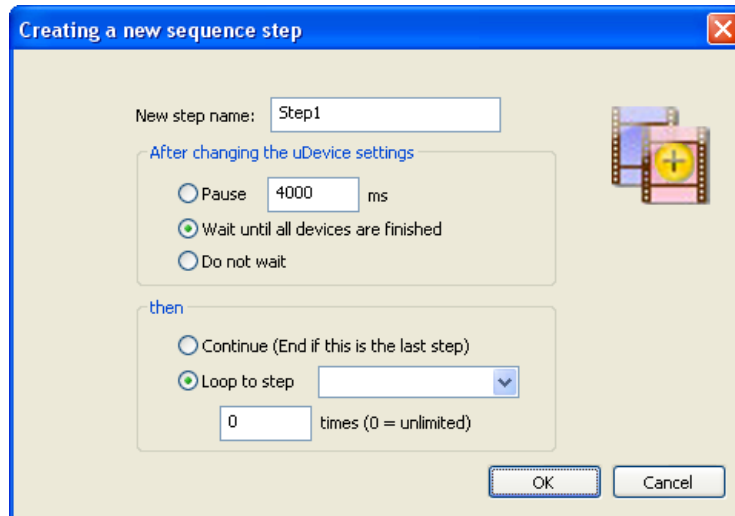
Select the uDevices Window.

Click **Interfaces** to view the

.

Set the initial target state for each device.

Click the Save as New Sequence Step  button. The Creating a New Sequence Step dialog box will open (Figure 23).



**Figure 23. Creating a New Process Step Dialog Box.**

If desired, enter a descriptive **Step Name**. Step names may have a maximum of 16 characters and may not include blanks or ‘;’, ‘<’, ‘>’, ‘\*’ or ‘=’.

Select how the script should respond **after changing the uDevice settings**:

Select **Pause**, then enter the duration to pause before continuing with the process. The pause duration begins as soon as the step starts.

If you select **Wait until all devices are finished**, uProcess will wait until all devices have completed their functions before continuing on with the process.

Select **Do Not Wait** to immediately continue on to the next step.

Select how the script should continue after this step:

Select **Continue** to continue to the next step in the process. If a new step is not added the process will end.

Select **Loop to step** to jump to another process step. Select the target step from the drop-down list, then enter the number of times the step should loop.


Click OK. The step will appear in the Sequencer Window, and its text will appear in the Main Window.


## Save a Script File

Click the **Save** toolbar button, or choose **File>Save**, to save all changes to the current script file. If the file has not yet been saved you will be prompted to provide a name and file location for it.

Choose **File>Save As** to store the current script under a new file name.


## Run, Pause and Quit a Script

When a script is open and error-free, the **Run**  toolbar button will be available. Click **Run** to initiate the process. All steps will be performed in order.

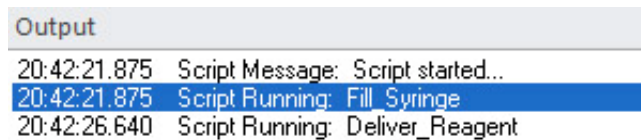
While a script is running you can click the **Pause**  toolbar button to pause the automated process. Click **Pause** again to continue the script from that point.



Click the **Quit Process**  toolbar button to quit running the automated script.

**Note:** When you Pause or Quit a script, devices that were moving will continue until they reach their target states. Click the **Stop All Devices**  toolbar button to stop all device activity.

While an automated script is running, the **Sequence Progress** tab of the *Output Window* will indicate the current status of the script and will report any errors encountered (Figure 24).



Output	
20:42:21.875	Script Message: Script started...
20:42:21.875	Script Running: Fill Syringe
20:42:26.640	Script Running: Deliver_Reagent

**Figure 24. Sequence Progress Tab of the Output Window**

## Automated Script Functions


### Beep: <Beep>

Plays an audible sound (the sound associated with with the Asterick in System Sounds).

Example: <Beep>

Note: The Beep function cannot be added using the Process Wizard.

### Break <Break>

Automatically activates the pause  toolbar button, pausing Sequence until the pause toolbar button is pressed. This function is useful for testing a script, or if you have an event with unpredictable timing that you need to wait for before resuming a script.

Example: <Break>

Note: The Break function cannot be added using the Process Wizard

### Goto <Goto> StepName

Creates a loop back to named step.

StepName defined name of step in script

Example: <Goto> FillStep

**HysteresisRegTo** (regulates both up and down)  
**HysteresisRegUpTo** (regulates up only)  
**HysteresisRegDownTo** (regulates down only)

*DeviceName: HysteresisRegTo Ptarget Ptolerance units*

Regulates between target pressure +/- tolerance. uProcess will regulate to *Ptarget* and then let the pressure drift until it falls outside the tolerance range.

*DeviceName:* defined name of uPS pressure sensor (must be defined in script header)

*Ptarget:* target pressure

*Ptolerance:* pressure tolerance (+/-)

*units:* pressure units

Example: HysteresisRegTo 40 1 kPa

**HysteresisRegTo to Channel** (regulates both up and down)  
**HysteresisRegUpTo to Channel** (regulates both up and down)  
**HysteresisRegDownTo to Channel** (regulates both up and down)

*DeviceName: HysteresisReg Ptarget Ptolerance units to ChX*

Similar to **HysteresisRegTo**, except it sends the output value to a specified channel that can be used to control a SPS01 syringe pump. Requires two lines of code:

*DeviceName:* **HysteresisRegTo** *Ptarget Ptolerance units to ChX*  
*SyringeName:* **MoveWith ChX** or *SyringeName:* **MoveOpposite ChX**

*DeviceName:* defined name of uPS pressure sensor (must be defined in script header)  
*Ptarget:* target pressure  
*Ptolerance:* pressure tolerance (+/-)  
*units:* pressure units

*SyringeName* defined name of syringe pump (must be defined in script header)  
*X* channel A, B, C, or D

**MoveWithChX:** pulls the syringe to decrease the pressure  
pushes the syringe to increase the pressure

**MoveOppositeChX:** pushes the syringe to decrease the pressure  
pulls the syringe to increase the pressure

**Example:**     HysteresisRegTo 40 1 kPa to ChA  
                  SPS01:     MoveWith ChA

#### **IfDone**     *DeviceName:* **IfDone**

If regulation is done, the immediately following step will be executed; otherwise, the immediately following step will be skipped.

*DeviceName:* defined name of uPS pressure sensor (must be defined in script header)

**Example:**     uPS1 : IfDone  
                  <Beep>

**Note:** The IfDone function cannot be added using the Process Wizard

#### **IfNotDone**     *DeviceName:* **IfNotDone**

If regulation is not done, the immediately following step will be executed; otherwise, the immediately following step will be skipped.

*DeviceName* defined name of uPS pressure sensor (must be defined in script header)

**Example:**     uPS1 : IfNotDone  
                  <goto> Step1

**Note:** The IfNotDone function cannot be added using the Process Wizard

#### **Loop**     **<Loop>** *StepName cycles*

Loops back to named step for specified number of cycles.

*StepName:* defined name of step in script

*cycles:* number of times to loop;

**Example:**     <Loop> FillStep 6

**Note:** For an endless loop, use the **<Goto>** command.

### **MoveTo**      *SyringeName: **MoveTo** vol units*

Sets syringe move to position.

<i>SyringeName</i>	defined name of syringe (must be defined in script header)
<i>vol</i>	syringe volume to move to
<i>units</i>	volume units, acceptable units include ul (default) ml nl

Example:      Reagent:      MoveTo 20.5 ul

### **Pause**      *<Pause> duration units*

Pauses script for specified duration.

<i>Duration</i>	length of pause
<i>units</i>	pause duration units, acceptable units include ms (default) s us

Example:      <Pause> 1 s

### **SetFlowRate**      *SyringeName: **SetFlowRate** rate units;*

Sets syringe flow rate.

<i>SyringeName</i>	defined name of syringe (must be defined in script header)
<i>rate</i>	syringe flow rate (positive number)
<i>units</i>	flow rate units, acceptable units include ul/min (default) ul/s nl/min nl/s

Example:      Reagent:      SetFlowRate 50 ul/s

### **SetValves**      *4VM01Name: **SetValves** x x x x*

Sets valve positions.

<i>4VM01Name</i>	defined name of 4VM01 (must be defined in script header)
<i>x x x x</i>	position of valves 1, 2, 3, and, 4, respectively, where x = 0 no change x = 1: open valve to 'A' x = 2: close valve x = 3 open valve to 'B'


Example:      4VM01\_A:      SetValves 1 0 3 2

### **Stop**      *DeviceName: **Stop***

**Stops device.**

*DeviceName* defined name of 4VM01 or syringe (must be defined in script header)

Example:      Reagent:      Stop

Note: The **Stop** command is added via the Process Wizard using the  button (Stop this uDevice) in the Device Control Overview window.

## Quit              <Quit>

Quits the script, steps following this function will not be run. This function will not stop a device that is already in process, for that use the **Stop** function.

Example: <Quit>

Note: The Quit function cannot be added using the Process Wizard.

## RegDownTo and RegUpTo

*SensorName*: **RegDownTo** *value units*; regulation is complete when sensor pressure reaches or drops below input value

or

*SensorName*: **RegUpTo** *value units*; regulation is complete when sensor pressure reaches or exceeds input value

<i>SensorName</i>	defined name of sensor (must be defined in script header)
<i>value</i>	pressure (positive or negative number)
<i>units</i>	pressure units, acceptable units: kPa

Example:      P032: RegDownTo 50 kPa

## RegDownTo Channel or RegUpTo Channel

*Similar to RegDownTo and RegUpTo, except it sends the output value to a specified channel which is used to control one or more SPS01 syringe pump.*

*Requires two lines of code:*

*SensorName*: **RegDownTo** *value units* **to ChX**  
*SyringeName*: **MoveWith ChX** or *SyringeName*: **MoveOpposite ChX**

or

*SensorName*: **RegDownTo** *value units* **to ChX**  
*SyringeName*: **MoveWith ChX** or *SyringeName*: **MoveOpposite ChX**

<i>SensorName</i>	defined name of sensor (must be defined in script header)
<i>value</i>	pressure (positive or negative number)
<i>units</i>	pressure units, acceptable units: kPa

<i>SyringeName</i>	defined name of syringe pump (must be defined in script header)
<i>X</i>	channel <i>A</i> , <i>B</i> , <i>C</i> , or <i>D</i>

MoveWithChX: pulls the syringe to decrease the pressure  
pushes the syringe to increase the pressure

**MoveOppositeChX:** pushes the syringe to decrease the pressure  
pulls the syringe to increase the pressure

Example:      P032:      RegDownTo 50 kPa to ChA  
                 SPS01:      MoveWith ChA

Note: Use the **SetFlowRate** command to set the syringe pump flow rate for each syringe, else the last flow rate set for the syringe will be used.

**RegOff**      *SensorName: RegOff*

Turns off the regulation for a pressure sensor.

Example:      032:   RegOff

## WaitAllDone <WaitAllDone>

Pauses script until all processes are complete.

Example: `<WaitAllDone>`

## General Formatting Rules

## Devices

Individual devices are defined in the script as follows:

Syringes:

```
*DeviceName = SPS01 size ul
```

Where *size* is the syringe size (4, 8, 20, 40, or 80)

## Valve Manifolds

```
*DeviceName = 4VM01
```

DeviceName must match name defined in the uDevice configuration (see [Device Naming and Numbering](#)).

Note: When referring to a device in the script the device name cannot start in the first column of a row. Insert a space or tab before the name.

## Comments

Comments can be added to the script using a semicolon (;). Anything after the semicolon is treated as a comment:

```
<Pause> 1000 ms; to allow time to monitor reaction
```

```
; <Beep> - this command will not be executed
```

## Step Name

Step names may have a maximum of 16 characters and may not include blanks or ‘;’, ‘<’, ‘>’, ‘\*’ or ‘=’. The Step Name must start in the first column of a row, do not add a space or tab before a step name.

## Editing Automated Script Text

As mentioned earlier, you can create a script using the Process Wizard, or you can create/edit the text directly.

To view and edit the text of a script, click on the **Sequencer** window, then select **Sequencing Script**. The text will appear in the **Main Window**. Here is a sample script:

```
*Syringe=      SPS01 20 ul
*Manifold=     4VM01
Open_Reservoir
    Manifold:   SetValves 1 0 0 0
    <WaitAllDone>
Fill_Syringe
    Syringe:    SetFlowRate 50 ul/min
    Syringe:    MoveTo 10 ul
    <WaitAllDone>
Open_Process
    Manifold:   SetValves 3 0 0 0
    <Pause>     1000 ms
Deliver_Reagent
    Syringe:    SetFlowRate 10 ul/min
    Syringe:    MoveTo 0 ul
    <WaitAllDone>
    <Loop>      Fill_Syringe      10
```

The first lines define the devices used in the script. Note that the devices are defined by *name* rather than *address*, so the names of all devices must be unique.

Below these declarations, each step is listed in order. For clarity, all state changes within each step are indented below the step name.

When learning to edit the text it may prove helpful to create a script using the Wizard, then to edit the generated text as the basis for your new script.

Most standard text editing functions are available, including **Cut**, **Copy** and **Paste**.

## Script Errors

uProcess will review the script as you create or edit it and will indicate errors as follows:

If the script has an error the **Run** button will be grayed out and the script cannot be run.

The **Script Parsing** tab of the **Output** window will display the message

\*\*\*The script cannot be run until the script errors are resolved\*\*\*

The **Script Parsing** tab of the **Output** window will also list the line number and specific error.

The step with the error will show a “broken” icon in the Sequencing Script list.

In the example shown in Figure 25, line 36 has an error. Device ‘water’ is not found, because the device was initialized as ‘Water’.

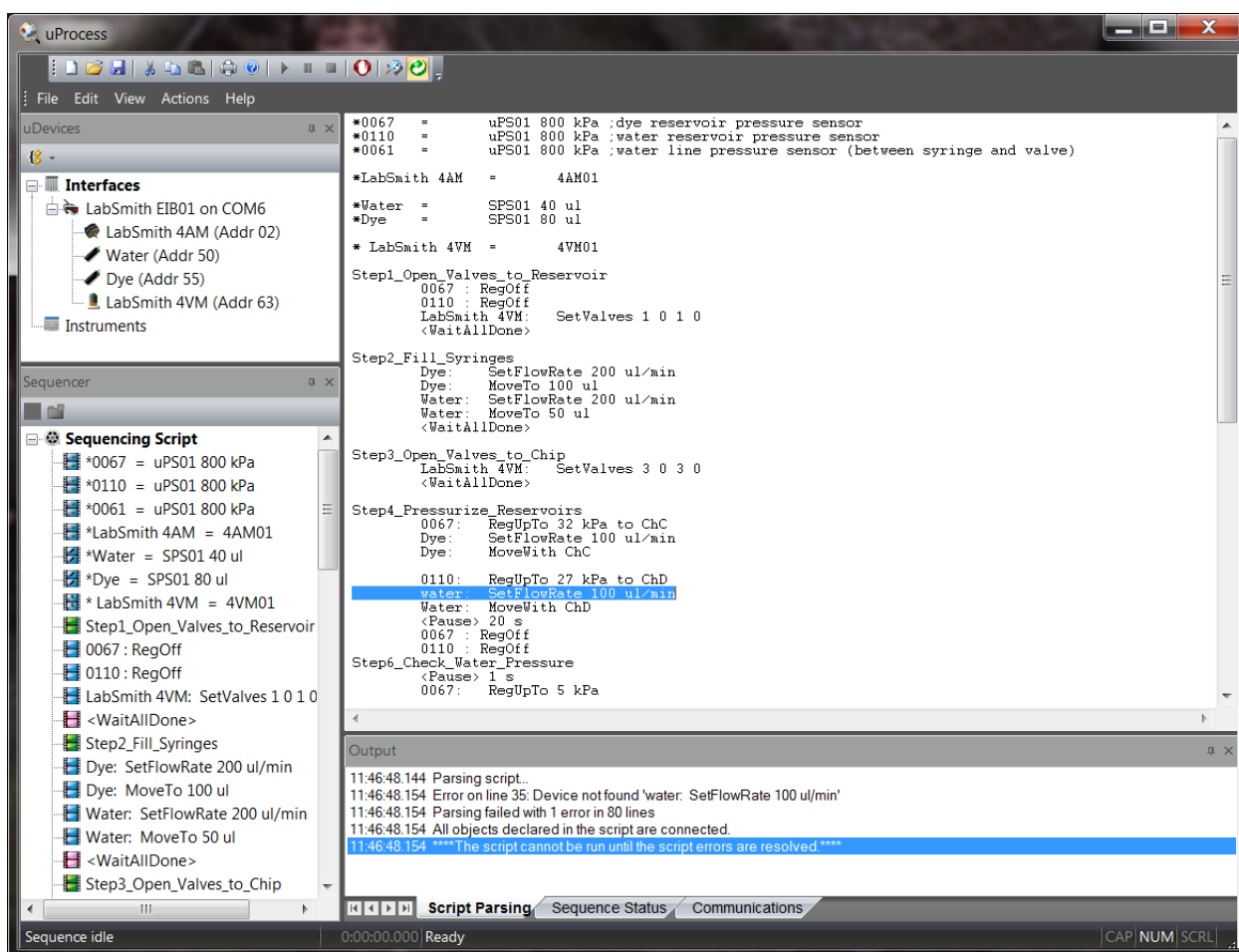


Figure 25. Sample script showing errors in line.

## Missing Devices

All of the devices referenced in a process must be available for the process to function. If you open or create a script which calls out a device that is not present, error messages will appear in the **uDevices Windows**, the **Script Parsing** tab of the **Output Window**, and the **Main Window** (Figure 26).



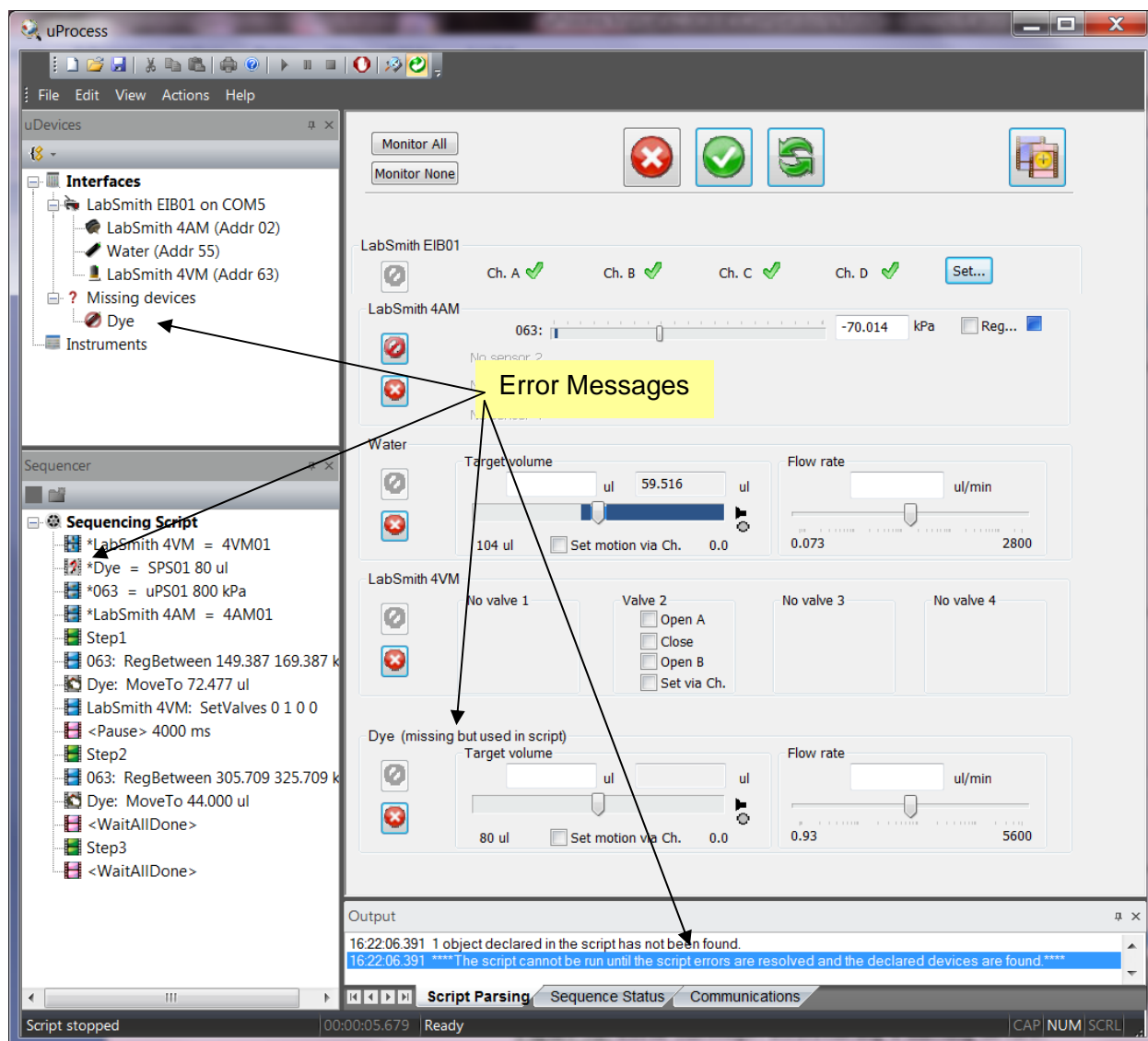


Figure 26. Error Message: Referencing a missing device.

For this example, the script references “Dye”, but the syringe is named “Water”. This error can be resolved by renaming the device (see [Device Naming and Numbering](#)) or changing the script. To change the scrip:

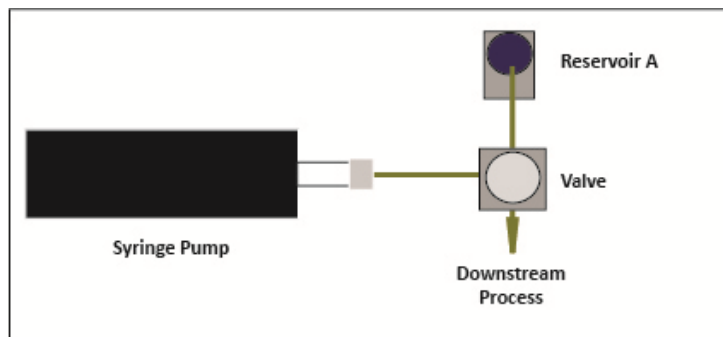
Right click on “Dye” under the Missing devices tab and select **Rename ...**

Change the name to “Water” and click **OK**.

## Example Script

In the example shown in [Figure 27](#) a syringe pump is attached to an automated valve, a supply reservoir and a downstream process. The syringe will first pull fluid from a reservoir connected

to the “A” port of the valve. The valve will then switch to the “B” position, and the syringe will deliver the fluid to the downstream process.



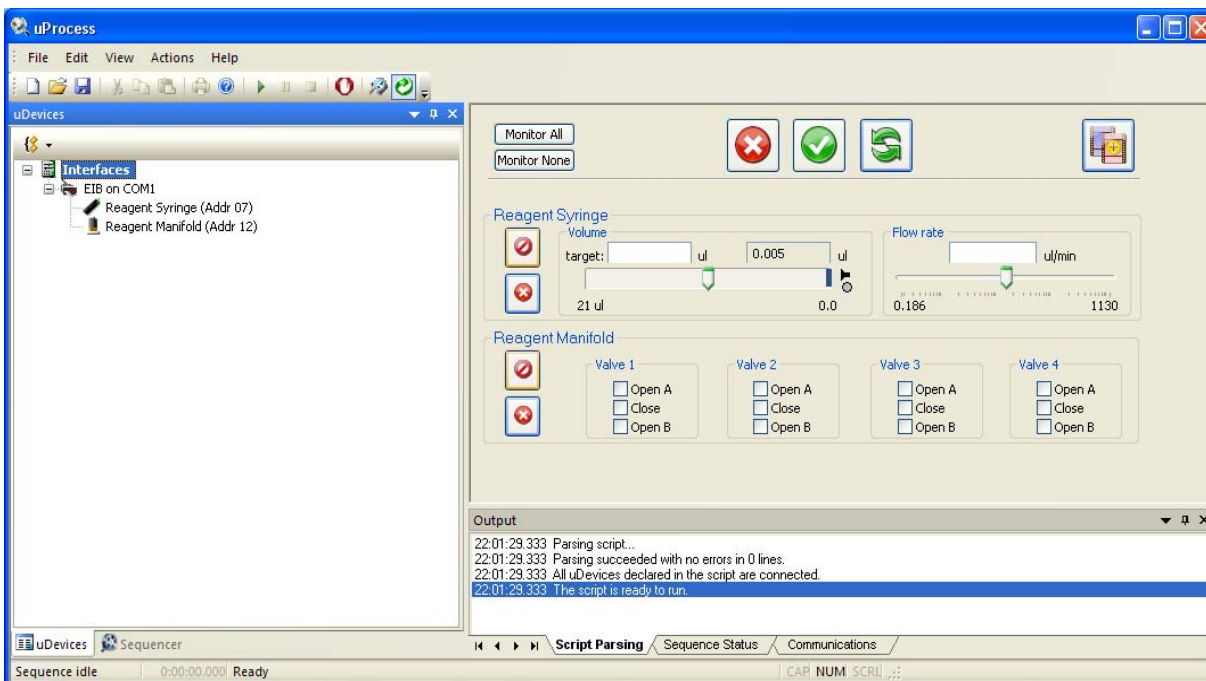
**Figure 27. Hardware Setup for the Sample Process.**

For this example the following devices are installed on one EIB:

- One 20 $\mu$ l syringe named “Reagent Syringe”
- One 4VM01 manifold named “Reagent Manifold”, with one valve connected at position 1.

The automated script is created as follows:

In the uDevices Window select Interfaces to display the **Error! Reference source not found.** (Figure 28).



**Figure 28. Installed Devices Shown in Device Control Overview Window.**

Set the position for Valve 1 on “Reagent Manifold” to **Open A**.

Depress the **Do Not Change uDevice Settings**  button next to the Reagent Syringe.

Click the Save As a New Sequence Step  button.

Name the new step “Open\_Reservoir.”

Select Wait until all devices are finished and Continue.

Click **OK** to add this step to the script and go on to the next step.

Set the **Target Volume** for the syringe named “Reagent Syringe” to 10 µl and the Flow Rate to 50 µl/min (*Figure 29*).

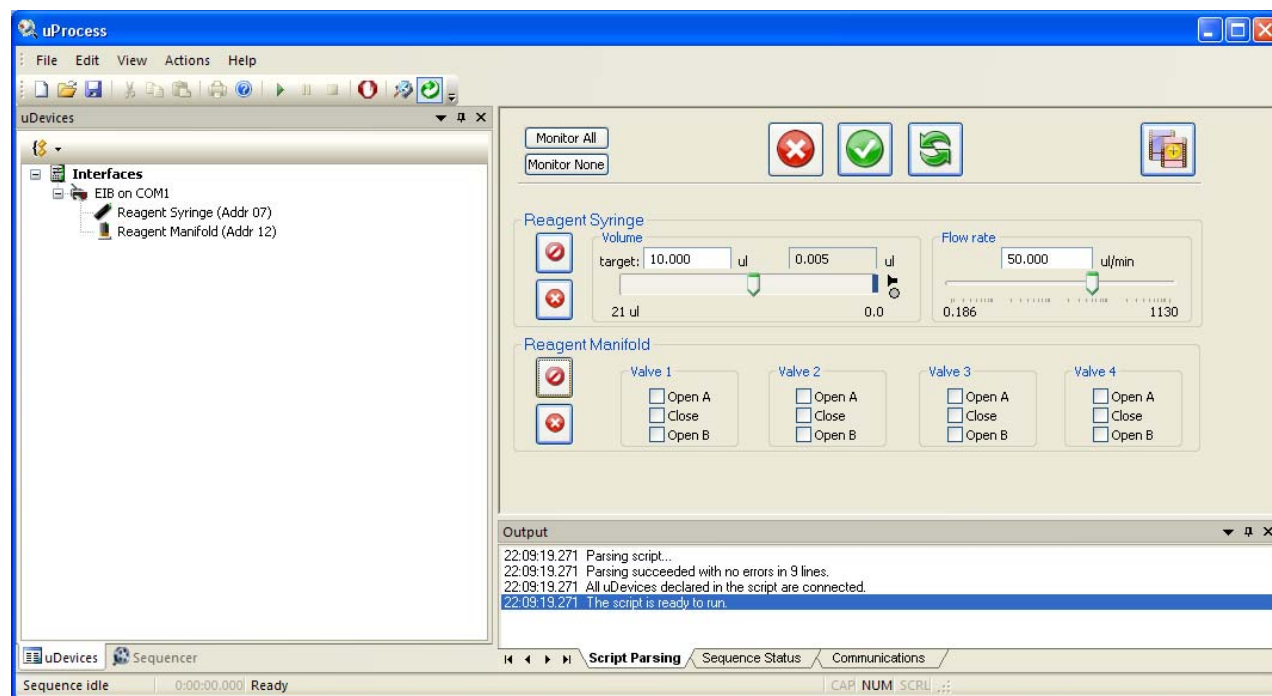



Figure 29. Step “Fill\_Syringe” Settings.

Depress the **Do Not Change uDevice Settings**  button next to the Reagent Valve.

Click the Save As a New Sequence Step  button.

Name the new step “Fill\_Syringe.”

Choose wait until all devices are finished and Continue (*Figure 30*).

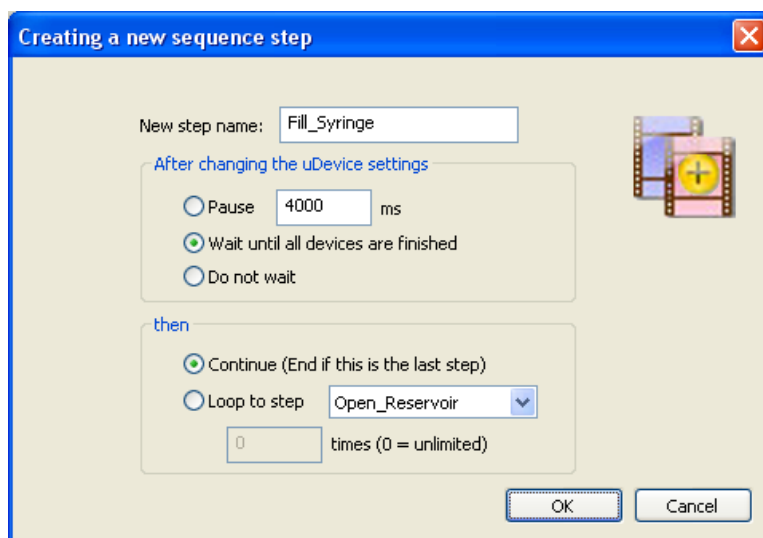


Figure 30. Step 1 Settings.

Click **OK** to add this step to the script. To view the process thus far, click the **Sequencer Window** tab then click on any step in the sequencing script (Figure 31). Select **Interfaces** in the **uDevices Window** to return to the *Error! Reference source not found.* and continue building the script.

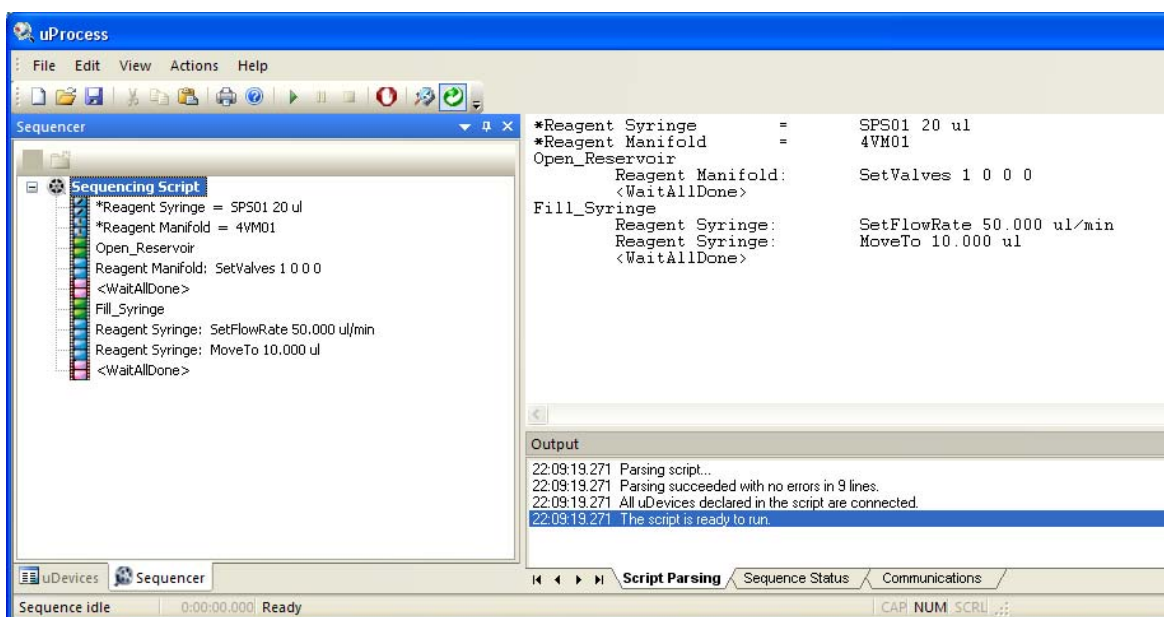



Figure 31. Step 1 Shown in the Sequence Tab and Main Window.

Set the position of **Valve 1** to **Open B** and depress the  button for the Reagent Syringe.

Click the **Save As a New Sequence Step** button and name the new step "Open\_Process".

Choose **Pause** and set the time for 1 s (1000 ms). Choose **Continue** and select **OK** to go on to the next step.

Set the **Target Volume** to 0 and the **Flow Rate** to 10ul/min and depress the  button for the Reagent Valve.

Click the Save as a New Sequence Step button.

Name the step “Deliver\_Reagent”.

Select wait until all devices have finished.

Select **Loop to Step** and choose **Fill Syringe** from the drop down menu. Set the loop count to 10, and the process will repeat for 10 iterations. (*Figure 32*).

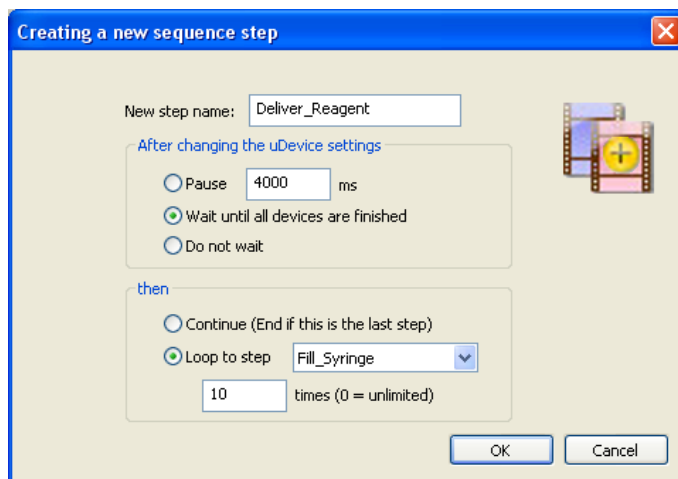


Figure 32. Deliver\_Reagent Step Settings.

Click OK. Again, select the Sequencer Window tab and click on a step in the script to view the complete script (Figure 33).

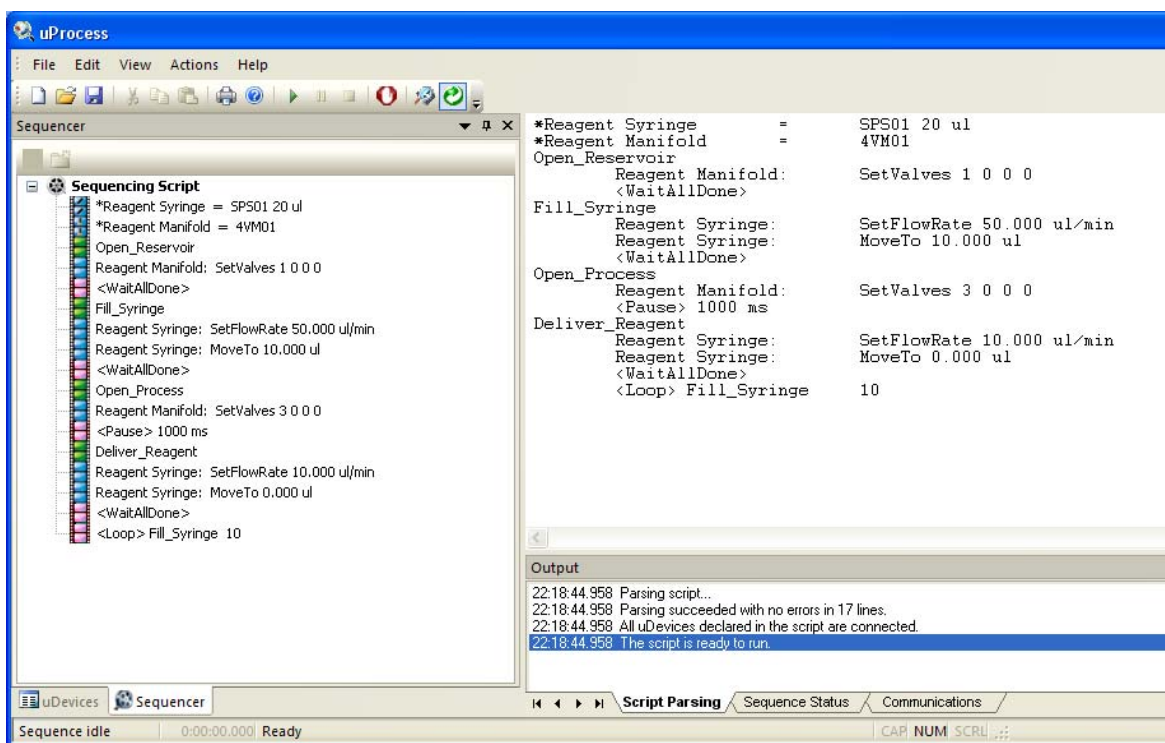


Figure 33. The Complete Example Script.

Press the **Run** button to initiate the automated script.

When a script is running, the current step will be highlighted in the **Main Window** to allow tracking of the script progress. The status of the devices and the step progression can be monitored real time. As shown in the figure below, the **Error! Reference source not found.** shows the real time positions of the syringes and valves; the **Sequence Status** tab of the **Output Window** shows which step is currently running and the number of iterations which have been completed. The bottom left corner of the window shows how long the script has been running (Figure 34).

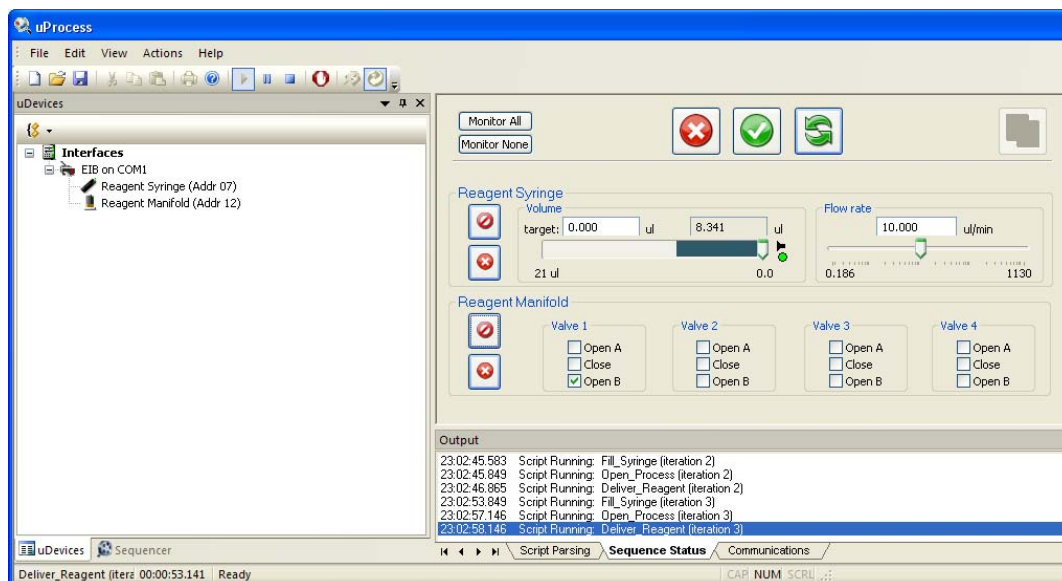


Figure 34. Sequence Status Tab

## Syringe Pump Volume vs Delivery Time

In the above example the syringe is set to deliver 10  $\mu$ l of reagent at 10  $\mu$ l/min. In order not to overshoot the delivery of the reagent, the syringe will slow down just before reaching the target volume; therefore, the delivery time may be more than 1 minute. This is most pronounced when delivering at high flow rates.

For some processes the infuse time may be more critical than the total delivery volume. For this case you can use the **<Pause>** and **<Stop>** functions together to set the infuse time. The script from the above example is shown below.

```

*Syringe=          SPS01 20 ul
*Manifold=         4VM01
Open_Reservoir
  Manifold: SetValves 1 0 0 0
  <WaitAllDone>
Fill_Syringe
  Syringe: SetFlowRate 50 ul/min
  Syringe: MoveTo 10 ul
  <WaitAllDone>
Open_Process
  Manifold: SetValves 3 0 0 0
  <Pause>      1000 ms
Deliver_Reagent
  Syringe: SetFlowRate 10 ul/min
  Syringe: MoveTo 0 ul
  <WaitAllDone>
  <Loop>      Fill_Syringe      10

```

The total volume delivered is 10 µl, which at 10 µl/min should take approximately 1 minute. If a delivery time of exactly 1 minute is desired, the script could be modified as follows (changes are in bold):

```

*Syringe=          SPS01 20 ul
* Manifold =       4VM01
Open_Reservoir
  Manifold: SetValves 1 0 0 0
  <WaitAllDone>
Fill_Syringe
  Syringe: SetFlowRate 50 ul/min
  Syringe: MoveTo 11 ul      ; provide extra volume so the
                             ; syringe won't stop prematurely
  <WaitAllDone>
Open_Process
  Manifold: SetValves 3 0 0 0
  <Pause>      1000 ms
Deliver_Reagent
  Syringe: SetFlowRate 10 ul/min
  Syringe: MoveTo 0 ul
  ;<WaitAllDone> this command is commented out
  <Pause>      60 s ;allow the syringe to run for 60 s
  Syringe: Stop ;stop the syringe
  <Loop>      Fill_Syringe      10

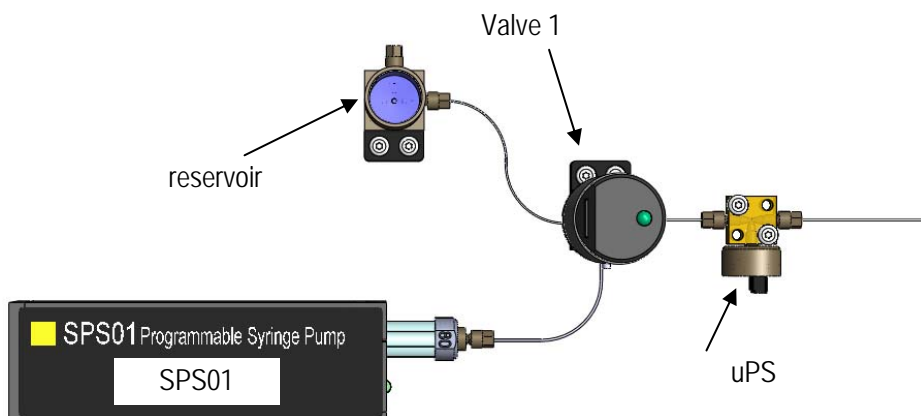
```

In the second example the syringe is instructed to stop after exactly 60 seconds, which will be after approximately 10 µl is delivered.

## Pressure Regulation Example Scripts

The uPS pressure sensors and SPS01 syringe pumps can be used together with the uProcess software to regulate the pressure in a device or create pressure driven flow. In the simple pressurization example below, the SPS01 syringe pump is filled from the reservoir, and then it is used to pressurize a device. When the pressure reaches 100 kPa the script is complete.





*Simple pressure regulation application (uPB-05 breadboard, 4VM manifold, and 4AM manifold not shown for clarity)*

### Simple Pressure Regulation Example Script

```
*SPS01      =      SPS01 80 ul
*uPS        =      uPS01 800 kPa
*4AM        =      4AM01
*4VM        =      4VM01

Switch_Fill      ; switch valve to "fill" position
4VM:             SetValves 1 0 0 0
4VM:             WaitDone

Fill             ; fill syringe with liquid from reservoir
SPS01:           SetFlowRate 150 ul/min
SPS01:           MoveTo 80 ul
SPS01:           WaitDone

Switch_Dispen    ; switch valve to "dispense" position
4VM:             SetValves 3 0 0 0
4VM:             WaitDone

Pressurize
uPS:             RegUpTo 100 kPa
SPS01:           SetFlowRate 20 ul/min
SPS01:           MoveTo 0 ul
uPS:             WaitDone
SPS01:           Stop ; stop the syringe pump
4AM:             Stop ; stop the regulation
<Beep>           ; indicate script is complete
```

One potential issue with the above script is if the syringe reaches the end before the pressure reaches 100 kPa the script will never complete. To account for this condition, the last step ("Pressurize") can be changed to include a loop that looks to see whether the syringe has finished. If the syringe finishes before the pressure is reached, the valve switches back to the reservoir to refill the syringe and then the device is pressurized again. This script is shown below.



### Pressure Regulation Example Script with auto re-fill of syringe if pressure is not reached

```
*SPS01      =      SPS01 80 ul
*uPS        =      uPS01 800 kPa
*4AM        =      4AM01
*4VM        =      4VM01

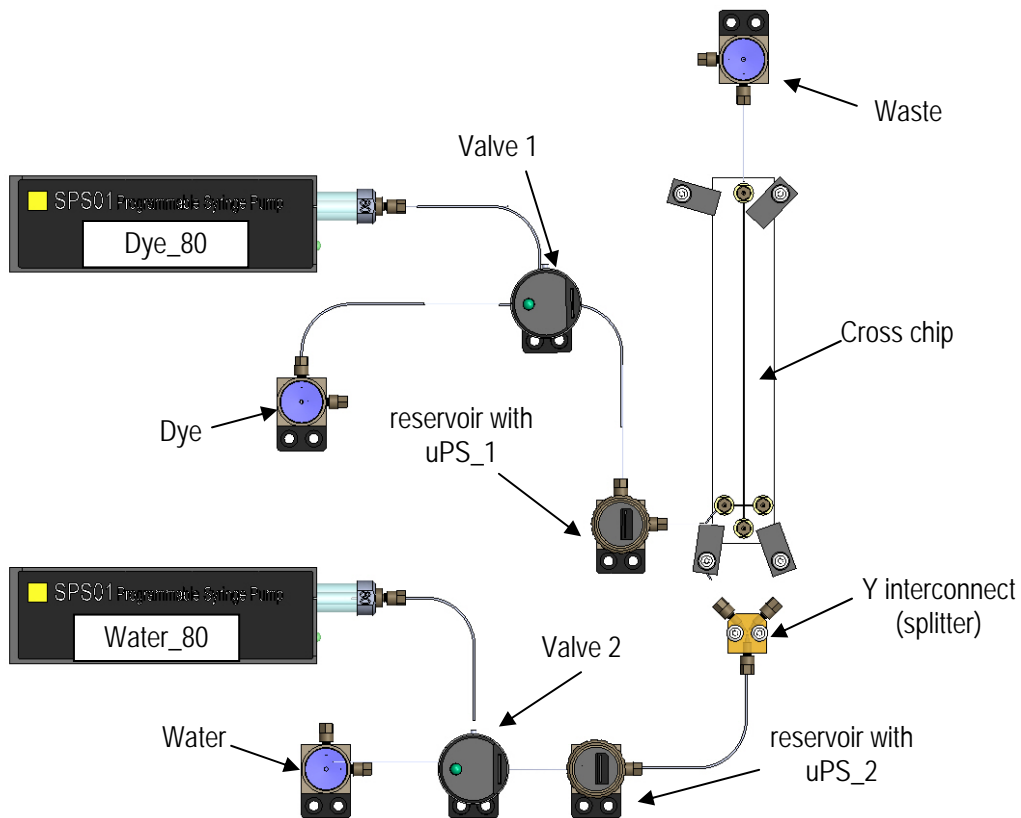
Switch_Fill      ; switch valve to "fill" position
4VM:            SetValves 1 0 0 0
4VM:            WaitDone

Fill            ; fill syringe with liquid from reservoir
SPS01:          SetFlowRate 150 ul/min
SPS01:          MoveTo 80 ul
SPS01:          WaitDone

Switch_Dispend   ; switch valve to "dispense" position
4VM:            SetValves 3 0 0 0
4VM:            WaitDone

Pressurize
uPS:            RegUpTo 100 kPa
SPS01:          SetFlowRate 20 ul/min
SPS01:          MoveTo 0 ul
Check_Loop
SPS01:          ifdone
<Goto>          Switch_Fill
uPS:            ifdone
<Goto>          Finish
<Pause>        1 s
<Goto>          Check_Loop
Finish
SPS01:          Stop ; stop the syringe pump
4AM:            Stop ; stop the regulation
<Beep>          ; indicate script is complete
```

The uProcess system can also be used to create near-constant pressure flow, as shown in the following pinched flow application example. Fluorescent dye is injected in the main leg of a cross chip and water is injected in the two cross arms to create pinched flow across the width of the channel. A reservoir (BB\_RES) out fitted with an o-ring and cap is placed upstream of each chip inlet. Each reservoir is partially filled with the corresponding liquid (dye or water), leaving an air gap at the top to allow flow dampening. A uPS pressure sensor is installed in the cap of the reservoir to monitor and regulate the pressure.



*Pressure regulated hydrodynamic flow application (iBB breadboard, 4VM manifold, and 4AM manifold not shown for clarity)*

The script below will:

1. Switch\_Fill: open the valves to the open reservoirs;
  2. Fill: fill the syringes;
  3. Switch\_Dispose: open the valves to the chip;
  4. Regulate: dispense the syringe fluids toward the chip
- DYE
- a. Dye\_80 syringe dispenses until reservoir\_1 pressure reaches 46 kPa
  - b. Dye-80 syringe stops, pressure monitored until pressure drops below 45 kPa
  - c. water dispense until reservoir\_2 pressure reaches 37.5 kPa

```

*uPS_1 =          uPS01 800 kPa
*uPS_2 =          uPS01 800 kPa
*Dye_80=          SPS01 80 ul
*Water_80 =       SPS01 80 ul
*4AM =           4AM01
* 4VM =          4VM01

Switch_Fill      ; switches valves to "fill" position
    4VM:         SetValves 1 1 0 0
    4VM:         WaitDone
Fill             ; fills syringes with liquid from reservoirs
    Water_80:    SetFlowRate 150 ul/min
    Water_80:    MoveTo 100 ul
    Dye_80:      SetFlowRate 150 ul/min
    Dye_80:      MoveTo 100 ul
    Water_80:    WaitDone
    Dye_80:      WaitDone

Switch_Dispende  ; switches valves to "dispense" position
    4VM:         SetValves 3 3 0 0
    4VM:         WaitDone

Regulate        ; dispense the syringes to pressurize the reservoirs,
                ; when the pressure reaches max set value syringes will
                ; stop pumping & wait until pressure has dropped below
                ; min value
    Dye_80:      SetFlowRate 100 ul/min
    uPS_1:       HysteresisRegTo 45 1 kPa to ChA
    Dye_80:      MoveWith ChA
    Water_80:    SetFlowRate 100 ul/min
    uPS_2:       HysteresisRegTo 37 0.5 kPa to ChB
    Water_80:    MoveWith ChB

CheckRegulation ; loop that checks if either syringe is empty (at
                ; 0) and switches to refill if so
    Water_80:    ifdone
    <Goto>        Switch_Fill
    Dye_80:      ifdone
    <Goto>        Switch_Fill
    <Pause>      1 s
    <Goto>        CheckRegulation

```

*Constant-pressure pinched flow example script.*

The above script will run continuously until it is manually stopped.

## EXTERNAL INSTRUMENTS

The uProcess software supports several USB- or RS232-controlled instruments. Please contact LabSmith for information and instructions on supported instruments.

## APPENDIX A. MENUS, TOOLBARS, WINDOW CONTROLS

### Menu Bar

The menus contain the following functions:

**File** Open, Close, Save, Print or create a new automated process.

**Edit** Cut, copy or paste text while editing an automated process.

**View** Choose which uProcess windows and toolbars are displayed.

**Actions** Run, Pause or Stop an automated process, control hardware communications, and update firmware.

Click and drag the three dots at the left of the menu bar to tear it from the main window as a floating palette. Click and drag the floating palette back into the main window to re-dock it.

### Toolbar

Toolbar buttons provide one-click shortcuts to common tasks. Buttons are gray when those functions are not currently available.



Figure 35. uProcess Toolbar Buttons.



**New** (ctrl-n) Create a new automated process



**Open** (ctrl-o) Open an existing automated process



**Save** (ctrl-s) Save the current automated process



**Cut** (ctrl-x) While editing an automated process, delete selected text and place it on the clipboard



**Copy** (ctrl-c) While editing an automated process, copy selected text to the clipboard



**Paste** (ctrl-v) While editing an automated process, paste text from the clipboard



**Print** (ctrl-p) Print the text of an automated process



**About uProcess** Find the uProcess version number. This window also contains links to the electronic version of this User Manual, the LabSmith web site, and LabSmith tech support.



**Run/Pause/Quit** Control the progress of an automated process.

**Stop all devices**

Stop all activity of all uProcess devices.



**Re-scan devices** Check for all connected uProcess devices.



**Online** Establish communication between the EIB and computer.

**Tip:** You can also use keyboard shortcuts, shown in parentheses in the list above, to perform the commands.

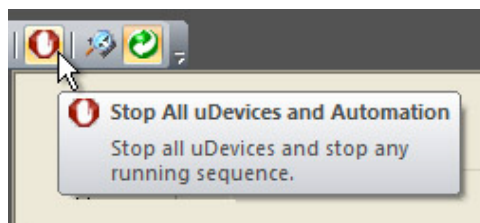
To toggle toolbar buttons on or off, click the down arrow on the right side of the toolbar, then choose **Add/Remove Buttons>Standard**. Choose **Reset Toolbar** to show all buttons.

Click and drag the three dots at the left side of the toolbar to tear it from the main window as a floating palette. Click and drag the floating palette back into the main window to re-dock it.

Choose View>Toolbars and Docking Windows>Standard to show or hide the toolbar.

## Tooltips

Each toolbar button (and many other buttons in uProcess) includes tooltip text that appears when you position your cursor over the button. Tooltips explain a tool's function. Choose **View>Verbose Tooltips** to view more extensive descriptions (Figure 36).



**Figure 36. Tooltips Provide Helpful Tool Descriptions.**

## Customizing the Dashboard

### Show/Hide Dashboard Elements

From the View menu choose Toolbars and Docking Windows. From this menu option you can choose to show or hide the toolbar, uDevices Window/Sequencer Window and Output Window.

### Auto-Minimize Windows

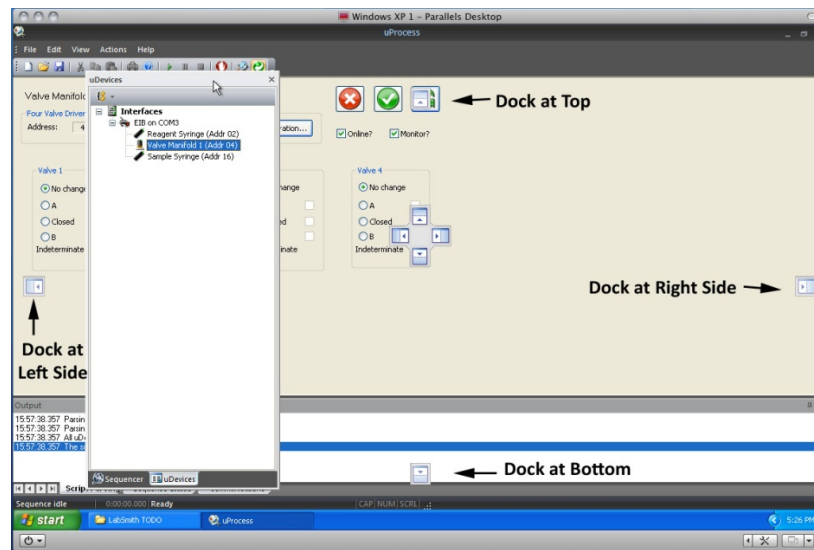


Click the “push-pin” button at the upper right of the uDevices Window/Sequencer Window or the Output Window to minimize the window to the edge of the screen. Roll over a minimized window to make it reappear; it will automatically minimize when you roll the cursor off of the window. The push-pin button will be horizontal in this “auto-minimize” mode. Click the button again to turn it vertically and disable auto-minimizing.

### Detach, Dock and Re-Position Windows

Click and drag the top of the uDevices Window/Sequencer Window or the Output Window to detach it from the Dashboard and create a floating window. Drag the floating window over the

Dashboard to dock it. Positioning guides will appear as you do so to help you attach the window at the top, bottom, left or right of the uProcess Dashboard (Figure 37).



**Figure 37. Positioning Guides for Re-docking a Window.**

## APPENDIX B. MAINTENANCE

### Updating Firmware

The firmware for all uProcess devices can be field updated as follows:

Download the latest version of uProcess software from [www.labsmith.com](http://www.labsmith.com).

Choose **Actions>Firmware>Update All Firmware**. uProcess will upload the latest firmware associated with the installed software to all connected syringe pumps, 4VM01 valve manifolds, and 4AM01 analog manifolds. Devices that are not attached will not be updated.

**Note:** AV200 series automated valves and uPS01 series pressure sensors do not have firmware and therefore do not need to be connected for firmware updates.

**Note:** You can update the firmware for a particular device by clicking the Configuration button in the device control panel.

uProcess devices are factory configured for optimal performance. From time to time it may be necessary to access and adjust these settings.

### Valve Actuation Profile Settings

Click the **Configuration** button to open the **Configure Device** dialog box shown in Figure 38. The **Actuation profile settings** control the motor actuation duration and current. These settings may need to be adjusted as your valves and motors age. However, the user should contact LabSmith before changing any of the Actuation Profile Settings, as incorrect settings can cause excessive wear of the motor or prevent the motor from reaching its set position.

Actuation profile settings					
Initial knob:	100	(100)	Stall holdoff:	3	(3)
Start Current:	120	(120)	Duration	150	(150)
Cruise Current:	192	(192)	Duration	140	(140)
Slew	135	(135)	Duration	10	(10)
End Current:	151	(151)	Duration	250	(250)
Backlash (ms):	120	(120)	Check pos	240	(240)
(default)					

**Firmware**  
Hardware version: 02.00 (00.06)  
Firmware version: 00.0d  
Firmware up to date.

Update Firmware

OK Cancel

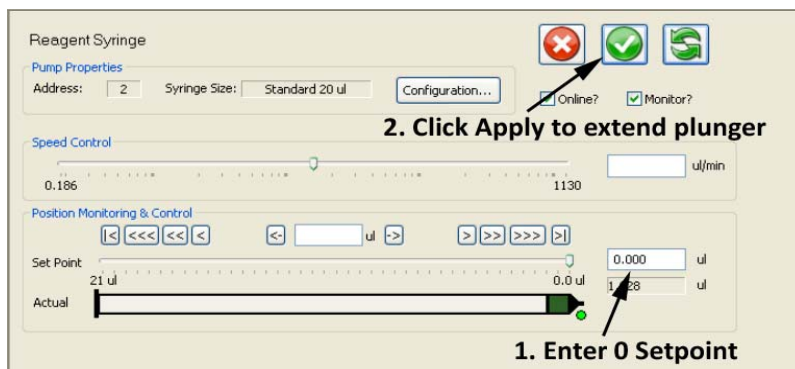
Figure 38. Configure Device Dialog Box for a 4VM01 Valve Manifold.



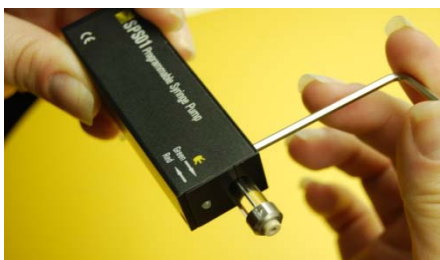
## Changing the Syringe Pump Glass Assembly

The SPS01 syringe glass and plunger can be removed from the pump body to be cleaned or exchanged with a different syringe size. To remove the syringe glass and plunger:

1. Supply power to the syringe pump.
2. In the uProcess **uDevices Window**, select the syringe.
3. Enter a **Set Point** of 0 to extend the syringe plunger to the 0 volume position.



4. Click **Offline** to take the syringe offline.
5. Unplug the syringe from the breadboard.
6. Using the supplied hex wrench, loosen the screw located on the side of the syringe.



7. Gently pull the syringe glass straight out of the syringe body, being careful not to bend the syringe plunger.
8. While holding the wide end of the plunger installation wrench, insert the wrench around the plunger tip and into the syringe until it engages with the hex head at the base of the syringe plunger.



**CAUTION:** Be very careful not to damage Teflon end of the plunger. Damage to the plunger can cause the syringe to leak.

9. Turn the wrench counterclockwise approximately two revolutions to unscrew the plunger.
10. Gently pull the wrench and plunger out of the syringe.

**CAUTION:** Do not operate the syringe without a plunger installed. Doing so can damage the syringe.

To install the syringe glass and plunger:

1. While holding the wide end of the plunger installation wrench, insert the plunger assembly into the wrench such that the hexagonal feature on the plunger is engaged with the wrench.
2. Gently insert the plunger assembly into the syringe and screw onto the shaft until hand tight (approximately two revolutions).
3. Carefully press the tapered glass syringe over the plunger assembly and into the syringe until it is seated in the syringe body.
4. Use the hex wrench to tighten the screw located on the top side of the syringe.
5. Gently pull on the syringe glass to ensure it is secure in the syringe body.
6. The glass size value must be input in the software each time you change the glass size to allow uProcess to display and compute correct volumes and volume flow rates. To select the correct glass size:
7. Click on the device in the uDevices Window.
8. Select Configuration.
9. Choose the syringe pump glass size from the **Size** drop-down list.
10. Follow instructions for calibrating, below.

**CAUTION:** Ensure you are using the correct size plunger for your syringe glass.

## Calibrating the Syringe Pump

Each SPS01 syringe pump is calibrated before shipment. However, each glass/plunger assembly may have slight length variations (up to 1%), and there can also be variations in the placement of the glass in the syringe body.

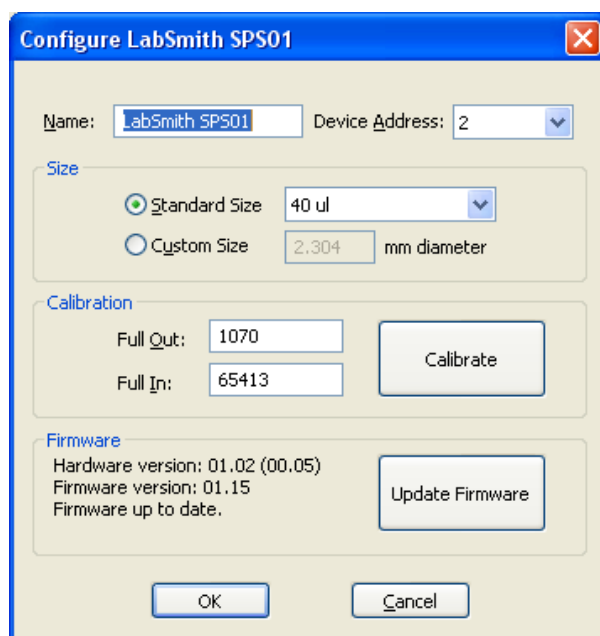
Each time the syringe glass is removed or moved the syringe pump should be recalibrated. Calibrating the syringe pump allows uProcess to find the plunger stopping point, thereby minimizing the dead volume within the syringe and allowing correct calculation of the syringe volume.

**Note:** Calibrating the syringe will run the syringe to its maximum extents and will update its calibration values. The procedure may take up to 1 minute.

To calibrate the syringe:

Select the device in the uDevices Window.

Select Configuration to open the Syringe Pump Configuration dialog box (Figure 39).



**Figure 39. Syringe Pump Configuration Dialog Box.**

Click the **Calibrate** button.

Select **OK** to store the values.

**Tip:** To obtain the maximum volume of the syringe pump. Remove the syringe glass from the SPS01 (but leave in the plunger) and run the calibration. Then replace the syringe glass, carefully pushing the syringe glass back until it hits the end of the plunger. Rerun the calibration after tightening the syringe glass in place.

## Care of the Syringe Glass and Plunger

### Plunger Care

Do not apply excessive force to move a plunger. Too much pressure can irretrievably bend the plunger or easily crack the syringe's glass barrel.

Avoid touching the plunger with your fingers. Abrasions, scratches, or oil due to handling the plunger with your fingers may interfere with proper plunger operation.

To minimize the chance of damage or contamination, do not store the plunger outside the glass. Use caution when reinserting the plunger into the barrel using the plunger installation tool.

For best results, dip the PTFE plunger tip into your solvent to re-wet it prior to reinserting the plunger into the barrel.

## Cleaning, Sterilizing, Autoclaving, and Disinfecting

### Cleaning

To clean syringes, it is best to use solvents known to be effective in solvating the sample. Preferred cleaning agents are non-alkaline, non-phosphate and non-detergent based. A biodegradable, non-phosphate, organic Cleaning Concentrate is available from Hamilton Company (Part No. 18311, [www.hamiltoncompany.com](http://www.hamiltoncompany.com)).

Rinse the syringe after use with an appropriate solvent or cleaning agent. Following the use of a cleaning agent, rinse the syringe with deionized water and finally acetone. Wipe the exterior surfaces of the syringe barrel and needle dry with a lint-free tissue. Make sure that there is no residual cleaning agent in the syringe before using or storing the syringe. Do not soak or submerge the entire syringe in any cleaning agent. Prolonged contact with cleaning agents may damage bonded parts.

### Sterilizing

Syringes may be sterilized with appropriate sterilizing agents such as ethylene oxide.

### Autoclaving

Syringes can be autoclaved up to a temperature of 115 °C. However, please be aware that over time autoclaving will shorten the syringes' life expectancy. Avoid rapid temperature changes, which can lead to splitting of the syringe's glass barrel. Stainless steel expands faster than glass upon heating, so for most terminations, autoclaving strains glued surfaces and may eventually lead to adhesive deterioration and leakage. The plunger should be removed from the syringe before autoclaving.

## Capillary and Tubing Installation Guide

LabSmith's CapTite™ one-piece fittings enable connection of components (valves, syringe pumps, interconnects, bonded-port connectors, Luer Locks, and cartridges) to 360um capillary, 1/32" tubing, or 1/16" tubing. To install the capillary or tubing:

Cut the capillary or tubing to length. Please refer to the capillary or tubing packaging for cutting instructions.

Insert the capillary into the nut end of the one-piece fitting until the tubing extends through the tapered ferrule end approximately 2 mm.

Insert the one-piece fitting into the component and turn the fitting to finger-tighten.

**CAUTION:** Do not over-tighten the fitting. Fittings should only be "finger-tight" to avoid damage (the 1/8" hex wrench can be used to tighten or loosen difficult-to-reach fittings).

Gently pull on the capillary tubing to ensure that it is held securely by the fitting. If the capillary comes free, loosen the fitting and repeat steps 2 and 3.

If the fitting leaks or the capillary cannot be secured, the following troubleshooting items should be checked prior to further tightening the fitting:

The capillary may be cut too short and so it is not protruding through the end of the fitting when installed

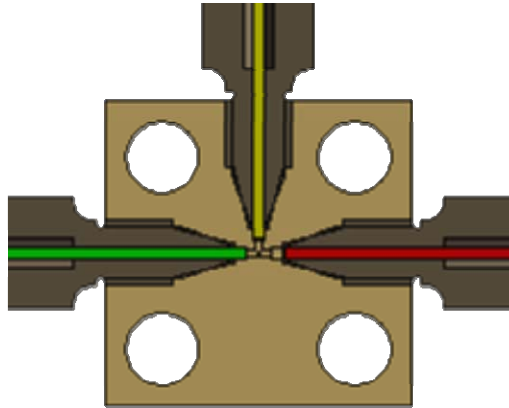
The capillary may not have a "clean cut". An angled or jagged edge will cause the fittings to leak

Broken capillary or other debris may be stuck inside the fitting or component. Try flushing the port from the opposite side to clear the debris.

If pressures greater than 10,000 psi are required, first finger-tighten all fittings and test for leaks at low pressure. Then, use the 1/8" hex wrench to tighten the fittings approximately ¼ extra revolution.

Figure 40 shows capillaries that are properly and improperly installed:

- **Red** capillary does not protrude through the one-piece fitting. The fitting will leak, and also there is a chance of compressing and damaging the tip of the one-piece fitting during installation.
- **Yellow** capillary may properly seal, but the capillary is not fully seated in the interconnect, creating dead volume.
- **Green** capillary is properly installed.



**Figure 40 T-Interconnect Showing Properly Installed Capillary (Green), Improperly Seated Capillary (Yellow), and Capillary Not Protruding Through Fitting (Red).**