

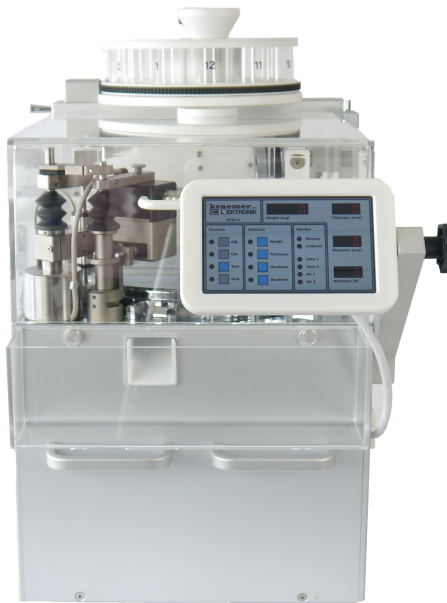
Charles Ischi AG

Langfeldstrasse 26 · 4528 Zuchwil/Switzerland

Tel. +41 32 621 49 23 · Fax +41 32 621 49 26

<http://www.ischi.ch> · e-mail: info@ischi.ch

**PRODUCTS FOR QUALITY AND
IN- PROCESS CONTROL IN THE
PHARMACEUTICAL INDUSTRY**



The Kraemer Universal Tablet Testing System UTS4.1 with Touch Screen Option...

...helps you navigate easily and effortlessly through the calibration- & adjustment procedure via a state-of-the-art Touch Screen display.

...is a very user-friendly product that enables you to print reports at any time onto a connected USB-printer.

Through this Touch Screen display, you have many options available right at your fingertips:

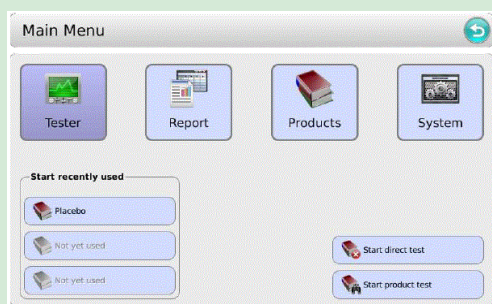
- Set-up parameters
- Administer a product catalogue with unlimited storage of products
- Start tests with product data or direct tests without product data
- Customise your settings and reports

The UTS Touch Screen Option can be connected to any online tester with a tablet press or with existing PH21 Software.

A UTS with a standard display panel can be upgraded with a Touch Screen at any time. The Touch Screen can be retrofitted to any existing units.

FEATURES OF THE UTS WITH TOUCH SCREEN

Adjustment / Calibration	Easy & user-friendly menu guided procedure via display
Tests	Tests with product data or direct tests without product data
Set-up of parameters	Direct access to parameter set-up via display with complete information and description of each parameter
Product capturing	Administration of product catalogue, unlimited storage of products
Reports	Different report options, can be customised; Can be viewed on display or printed
Calibration protocol	Calibration report can be printed at any time
Archiving of tests	Possible
Print-outs	USB-printer supported
Languages	Currently: German & English. Additional languages on request
Suitable for:	Online testers with tablet press; Testers with PH21 Software; Upgrade of standard display panel for extended functionality; For retrofit of existing units
Not suitable for:	Does not replace PH21 Software; Not suitable for high volume laboratory testing; CFR21 Part11 compliant testing
Facts, Benefits & Advantages	User-friendly Extended stand-alone function Compact state-of-the-art design Easy & fast access of parameters All tests can be printed via a USB printer



Touch Screen Menu

Different Menu Options

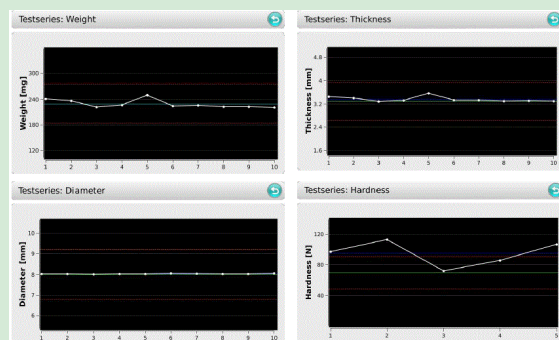
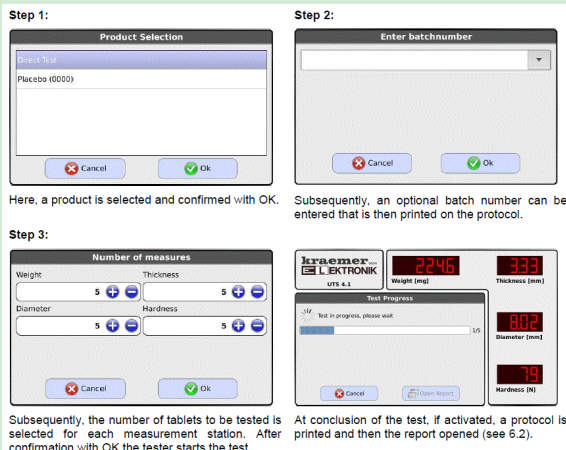


Diagram reports

Charles Ischi AG
TESTING  TECHNOLOGY

HEAD OFFICE:
Langfeldstrasse 26
CH- 4528 Zuchwil
Switzerland

Phone: +41 (32) 621 4923
Fax: +41 (32) 621 4926
E-mail: info@ischi.ch

UK & IRELAND OFFICE:

Phone: +44 (1623) 554 518

Website: www.ischi.ch